



Twickenham Road, TW9

£498,000

An excellent opportunity to acquire a centrally located, second-floor, period purpose-built apartment offering approximately 645 sq ft of well-arranged accommodation. The property is ideally positioned for commuters, with excellent tube and rail connections into London available from Richmond Station, including the District Line, South Western Railway, and the London Overground.

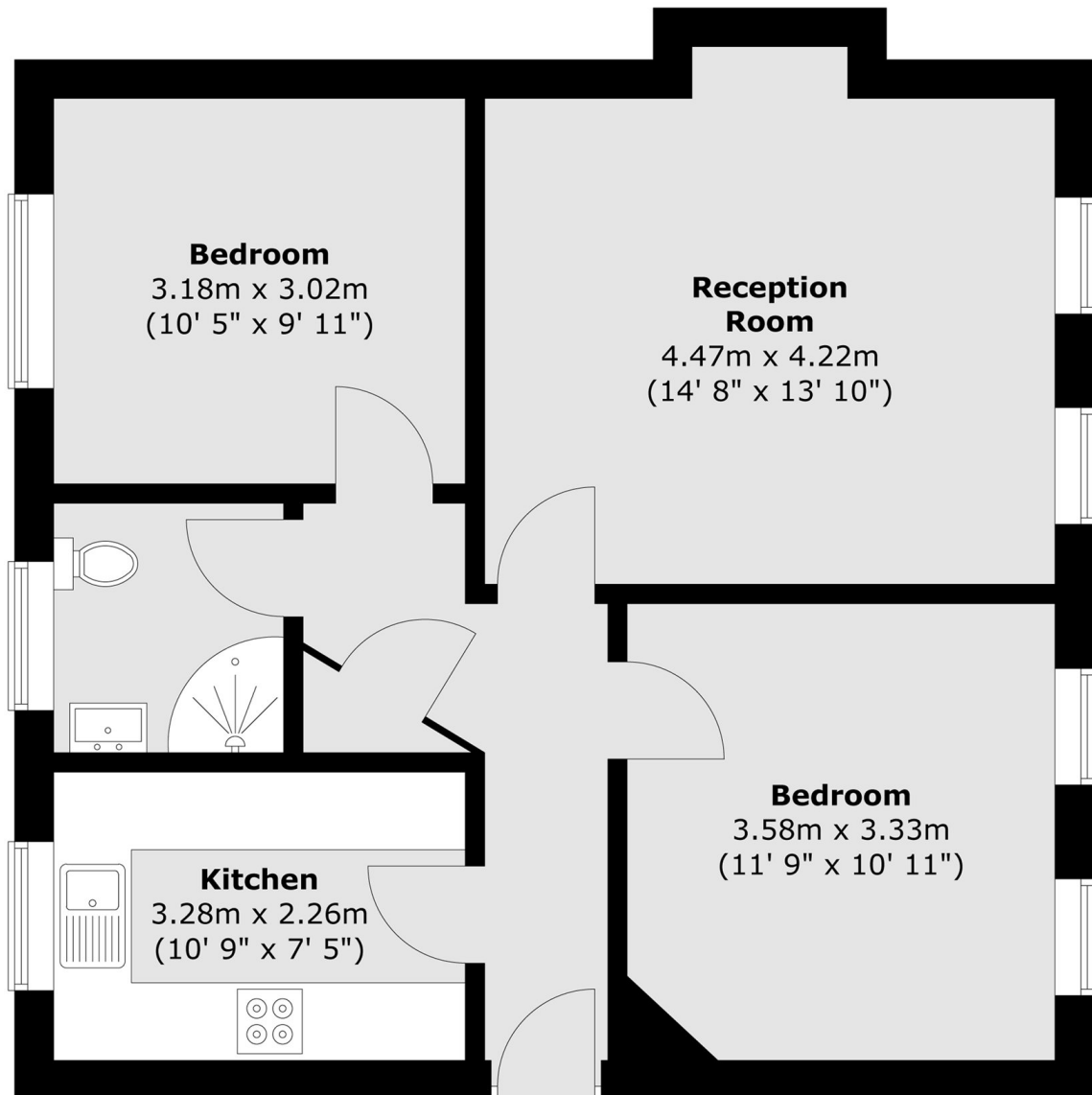
Twickenham Road provides great access to the town centre of Richmond where a plethora of fine restaurants and eateries can be found amongst a vast array of shops, outstanding transport links, the River Thames, Richmond Green and Richmond Park. Whilst also being conveniently situated beside the Royal Botanic Gardens, Kew and the Old Deer Park area.

Features

- Two Double Bedrooms
- Spacious Reception Room
- Fitted Kitchen
- Modern Bathroom
- Second Floor (Top)
- No Forward Chain

Twickenham Road, Richmond, TW9

Second Floor



Total area (approx.) : 59.9 sq. m (645 sq. ft)