



CHATTERTON | REES



10 Errington Drive

, Windsor, SL4 5EG

Guide price £1,295,000



10 Errington Drive



Description

An Exceptional Four-Bedroom Detached Home in the Heart of Windsor

Nestled at the end of a peaceful cul-de-sac, this beautifully presented detached home offers impressive curb appeal with its wide frontage, spacious private driveway accommodating three cars, a double garage.

Extending to approximately 2,500 sq. ft. over two floors, the property provides generous and well-balanced living space. The ground floor features two large reception rooms — one a formal sitting room, and the other a relaxed family area forming part of an elegant kitchen extension that opens directly onto the decked garden terrace. The recently remodelled kitchen boasts sleek stone worktops and high-end integrated appliances, creating a contemporary and practical heart to the home.

Further accommodation on the ground floor includes a separate dining room, a front-facing study, and a guest W.C.

- Four Bedrooms
- Garage
- Two Large Receptions
- Detached
- Large Driveway
- Newly Remodelled Kitchen



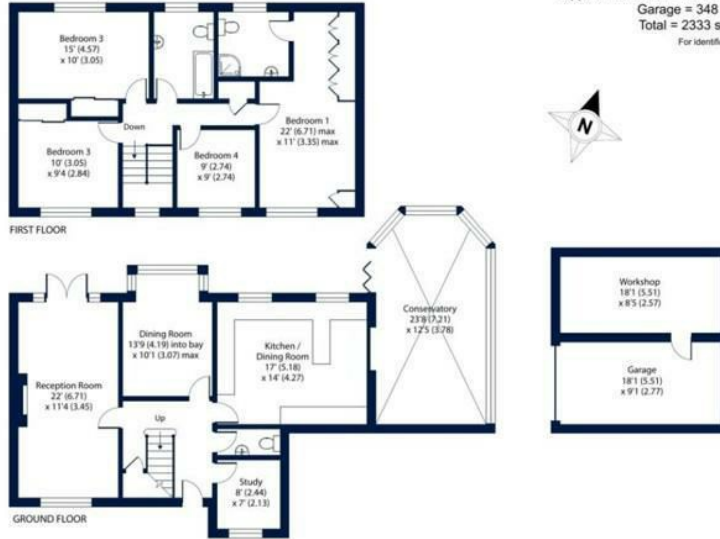


Floor Plan

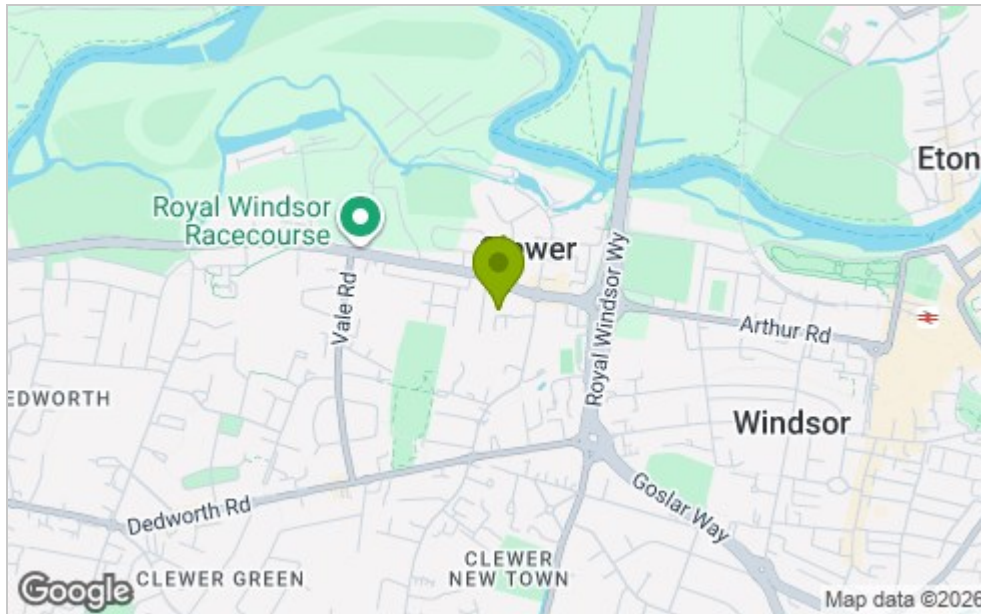


Errington Drive, Windsor, Berkshire, SL4

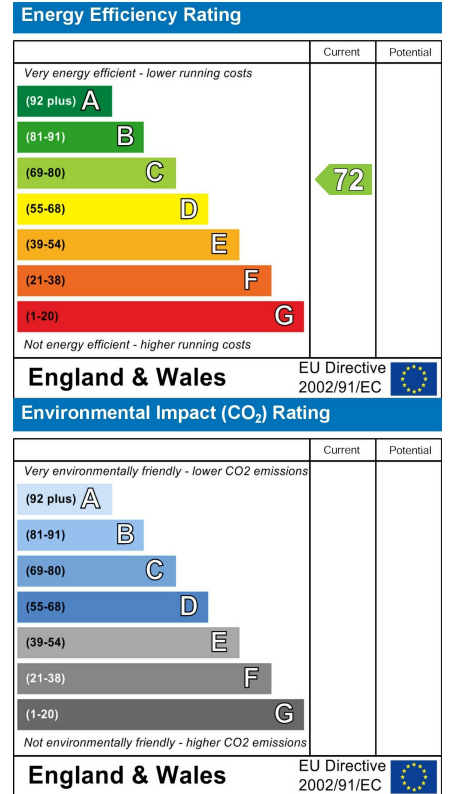
Approximate Area = 1985 sq ft / 184.4 sq m
 Garage = 348 sq ft / 32.3 sq m
 Total = 2333 sq ft / 216.7 sq m
 For identification only - Not to scale



Area Map



Energy Efficiency Graph



Viewing

Please contact our Chatterton Rees Office on 020 3780 0580 if you wish to arrange a viewing appointment for this property or require further information.

These particulars, whilst believed to be accurate are set out as a general outline only for guidance and do not constitute any part of an offer or contract. Intending purchasers should not rely on them as statements of representation of fact, but must satisfy themselves by inspection or otherwise as to their accuracy. No person in this firm's employment has the authority to make or give any representation or warranty in respect of the property.