

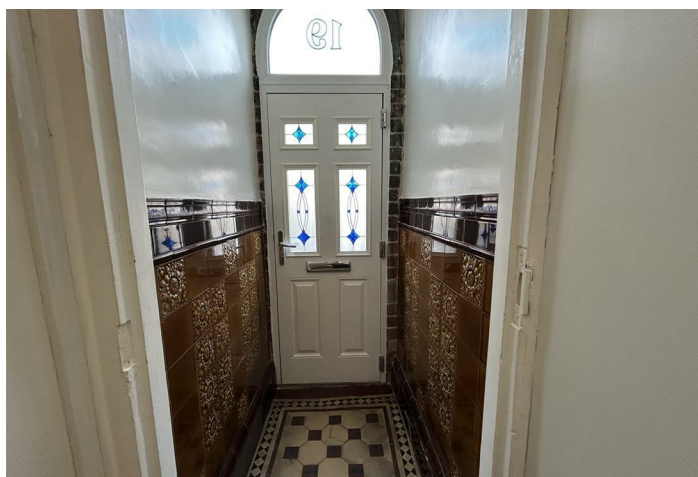
Churchills



Church Street
, Mexborough S64 0HG

- UNIQUE SEMI DETACHED PROPERTY
 - FOUR FLOORS
 - FOUR RECEPTION ROOMS
 - THREE BATHROOMS
 - GARAGE & DRIVEWAY
- MULTI FUNCTIONAL LIVING
 - FIVE BEDROOMS
 - TWO KITCHENS
 - CANAL SIDE SETTING
 - EPC RATING TBC

£1,700 Per Calendar Month





Location

ENTRANCE HALLWAY

Attractive character entrance hallway with feature tiling.

FRONT FACING LOUNG

Bay windowed lounge with fireplace and double doors to the dining room.

REAR FACING DINING ROOM

Rear facing dining room with access to the kitchen

SPACIOUS KITCHEN

Spacious fitted kitchen with cooking facilities and steps upto the sun room.

SUNROOM & TERRACE

Rear facing multi-functional room with its own enclosed terrace overlooking the gardens and canal. Steps down to the garden.

BASEMENT UTILITY ROOM

Stairs from kitchen to spacious utility wash room area.

BASEMENT OFFICE

Small office area.

BASEMENT ROOM & WC / SHOWER

Multi-functional room with WC, sink and shower enclosure.

BASEMENT GAMES ROOM / RECEPTION FOUR

Huge reception room with direct access to the rear garden.

FIRST FLOOR BEDROOM ONE

Spacious front facing room with feature fireplace.

FIRST FLOOR BEDROOM TWO

Rear facing bedroom.

FIRST FLOOR BEDROOM THREE

Rear facing bedroom.

FIRST FLOOR BATHROOM

Family bathroom with roll top bath, wc and sink unit.



ATTIC SUITE & BEDROOMS FOUR & FIVE

Multi-functional attic suite with either a lounge, bedroom, or two bedrooms and a kitchen and bathroom in between.

GARAGE & OUTBUILDING

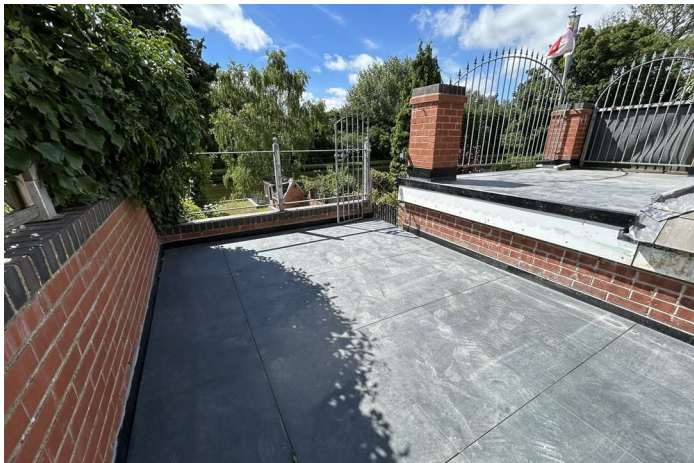
Spacious garage with pedestrian access to the garden. Outbuilding storage to the rear patio.

GARDENS & PATIOS

The garden leads to the canal at the rear of the property, with mooring included. There are three patio areas, as well as the sun terrace off the sunroom.



Local Authority Doncaster
Council Tax Band B
EPC Rating D



Churchills Lettings Office

16 High Street, Mexborough, South
Yorkshire, S64 9AS

Contact

01709 582880
Info@churchillsestateagents.com
www.churchillsestateagents.com

Agents Note: Whilst every care has been taken to prepare these particulars, they are for guidance purposes only. All measurements are approximate and for general guidance purposes only and whilst every care has been taken to ensure accuracy, they should not be relied upon and potential buyers/tenants are advised to recheck the measurements.