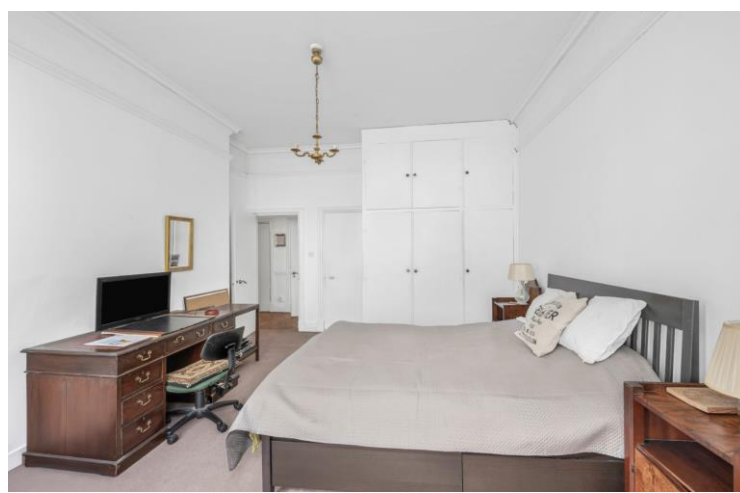




Devonshire Mansions
208 Great Portland Street, W1W

CHESTERTONS





Available on a short term basis, this magnificent 3 bedroom apartment located in the heart of Fitzrovia. Occupying an impressive 1465 square feet, with exceptionally high ceilings and period features throughout. The perfect central London location.

- Short Term Rental
- 3 Bedrooms
- Furnished or Part Furnished
- Second Floor with Lift

£7,000 pcm

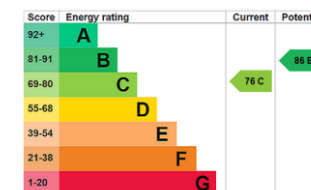
Additional tenant charges apply (fees apply to non-AST tenancies only)

Tenancy Agreement Fee: £300

References per Tenant/Guarantor: £60

Inventory check (approx. £100 – £250 inc. VAT)

chestertons.co.uk/property-to-rent/applicable-fees



Minimum Term: 2 months
Deposit Required: £4,846.15
Local Authority: City of Westminster
Council Tax Band: F
EPC Rating: C
Furnished, Part Furnished

Chestertons Covent Garden Lettings

196 Shaftesbury Avenue
 Covent Garden
 London
 WC2H 8JF

coventgardenlettingsusers@chestertons.co.uk
 02030408400



Approx Gross Internal Area 1465 Sq Ft - 136.10 Sq M

Every attempt has been made to ensure the accuracy of the floor plan shown.
However, all measurements, fixtures, fittings, and data shown are approximate interpretations and
for illustrative purposes only.
Measured according to the RICS IPMS 2, Not To Scale.
www.goldlens.co.uk
Ref. No. 028182J

Chesterton UK Services Limited trading as Chestertons for themselves and for the vendor of this property whose agents they are, give notice that (i) these particulars do not constitute any part of an offer or contract, (ii) all statements contained within these particulars are made without responsibility on the part of Chestertons or the vendor, (iii) whilst made in good faith, none of the statements contained within these particulars are to be relied upon as a statement or representation of fact, (iv) any intending purchasers must satisfy themselves by inspection or otherwise as to the correctness of each of the statements contained within these particulars, (v) the vendor does not make or give either Chestertons or any person in their employment any authority to make or give representation or warranty whatsoever in relation to this property. Wide angle lenses may be used. ©Copyright Chestertons | Chesterton Global Ltd | Registered Office 40 Connaught Street, Hyde Park, London W2 2AB Registered Company Number 05334580.

