



Connells
01902 710 170
FOR SALE

Connells

Davenport Road
Wednesfield Wolverhampton



Property Description

Connells Wolverhampton are delighted to bring to the market this well presented and attractive three bedroom end terrace family property in a popular residential location. Benefiting from NO ONWARD CHAIN this property must viewed in order to fully appreciate.

The property comprises of lounge, kitchen, utility, three bedrooms and family bathroom. Externally there is a driveway to front and enclosed rear garden.

The Location & Area

Situated off Hyde Road with links to the Lichfield Road with further links to Wednesfield shopping centres, along with New Cross hospital and Bentley Bridge retail park. Sought after schools and bus routes area within close proximity.

Lounge

17' 6" x 10' 2" (5.33m x 3.10m)

Double glazed window to front and rear, central heating radiator, door to entrance hall.

Kitchen

9' 5" x 13' 5" (2.87m x 4.09m)

Double glazed door and window to rear, a range of wall and base units, space for cooker, space for various appliances, door to utility area.

Utility Area

Double glazed door to front, space for various appliances, door to kitchen.

Entrance Hall

Double glazed door to front, stairs to first floor landing, door to various rooms.



First Floor Landing

Doors to various rooms.

Bedroom One

9' 1" x 13' 9" (2.77m x 4.19m)

Double glazed window to front, central heating radiator, door to first floor landing.

Bedroom Two

11' 9" x 9' 5" (3.58m x 2.87m)

Double glazed window to rear, central heating radiator, door to first floor landing.

Bedroom Three

7' 9" x 8' 9" (2.36m x 2.67m)

Double glazed window to front, central heating radiator, door to first floor landing.

Family Bathroom

Double glazed window to rear, panelled bath, pedestal sink, low flush toilet, door to first floor landing.

Outside Front

Gravelled driveway to front providing off road parking.

Outside Rear

Good size enclosed rear garden, lawned area, sandstone paved path and patio.

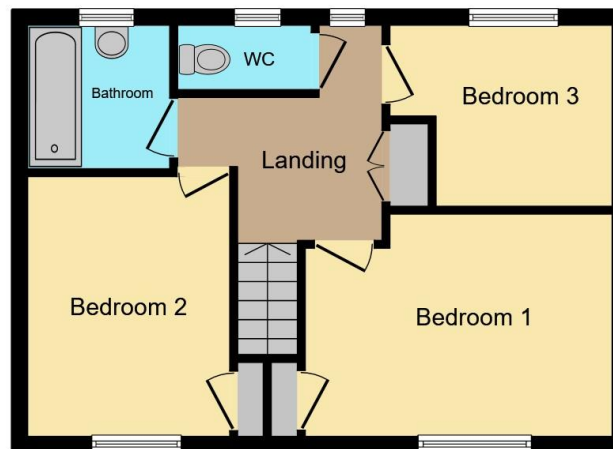








Ground Floor



First Floor

Total floor area 85.5 m² (920 sq.ft.) approx

This floor plan is for illustrative purposes only. It is not drawn to scale. Any measurements, floor areas (including any total floor area), openings and orientation are approximate. No details are guaranteed, they cannot be relied upon for any purpose and they do not form part of any agreement. No liability is taken for any error, omission or misstatement. A party must rely upon its own inspection(s). Powered by www.propertybox.io



To view this property please contact Connells on

T 01902 710 170
E wolverhampton@connells.co.uk

81-83 Darlington Street
 WOLVERHAMPTON WV1 4EX

EPC Rating: C Council Tax
 Band: A

Tenure: Freehold

view this property online connells.co.uk/Property/WVH335501



1. MONEY LAUNDERING REGULATIONS Intending purchasers will be asked to produce identification documentation at a later stage and we would ask for your co-operation in order that there will be no delay in agreeing the sale. 2. These particulars do not constitute part or all of an offer or contract. 3. The measurements indicated are supplied for guidance only and as such must be considered incorrect. Potential buyers are advised to recheck measurements before committing to any expense. 4. We have not tested any apparatus, equipment, fixtures, fittings or services and it is in the buyers interest to check the working condition of any appliances.

Connells Residential is registered in England and Wales under company number 1489613, Registered Office is Cumbria House, 16-20 Hockliffe Street, Leighton Buzzard, Bedfordshire, LU7 1GN. VAT Registration Number is 500 2481 05.

See all our properties at www.connells.co.uk | www.rightmove.co.uk | www.zoopla.co.uk

Property Ref: WVH335501 - 0002