



**Ewart Drive, Bedlington, NE22 6FB**

Offers Over **£200,000**

**Harpers** | POWERED BY **exp** UK  
property people



**Bedrooms: 3 | Bathrooms: 2 | Receptions: 2**

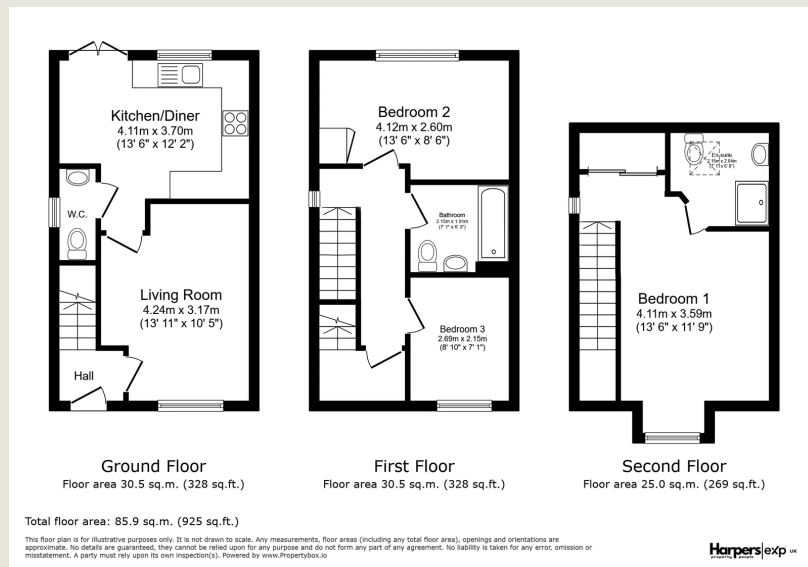
A very well presented three-bedroom semi-detached townhouse, this modern property is ideally situated within the increasingly popular Fenwick Park development, offering comfortable and stylish living close to central Bedlington's various amenities. Spanning 925 sq ft, this home is in great decorative order throughout, making it perfect for those seeking a contemporary lifestyle. The ground floor features a bright front aspect living room and a full-width kitchen/diner, creating a welcoming space for daily life and entertaining, complemented by a convenient ground floor WC. The first floor hosts a well-appointed family bathroom and two well-proportioned bedrooms. The top floor is dedicated to a spacious main bedroom, complete with an en-suite shower room, offering a private retreat. Externally, the property benefits from a generous South-facing rear garden, providing an ideal outdoor space for relaxation or entertaining. Two allocated parking spaces further enhance the convenience. Located in a popular residential area, this home combines modern amenities with a desirable locale.

- Semi-Detached Town House
- Three Well Proportioned Bedrooms
- First Floor Bathroom, Top Floor En-Suite Shower Room
- Front Aspect Living Room
- Full Width Kitchen/Diner
- Ground Floor WC
- Generous South Facing Rear Garden
- Two Allocated Parking Spaces
- Great Decorative Order Throughout
- Popular Residential Location









**Harpers Property People**  
80 Windsor Gardens, Bedlington, NE22 5SY

07813 673 606

[ali@harpersproperty.com](mailto:ali@harpersproperty.com)

<https://harpersproperty.com>

**Harpers**exp POWERED BY **UK**  
property people