



Asquith House | Marylebone | London | W2

Asking Price - £800,000



- One-bedroom apartment, 10th floor
- High-end integrated kitchen appliances
- Contemporary bathroom, high standard finish
- 24-hour concierge service
- Short walk to Paddington Station
- Modern open-plan living area
- Spacious bedroom with ample storage
- Private balcony
- Access to private gym
- Property can be sold fully furnished

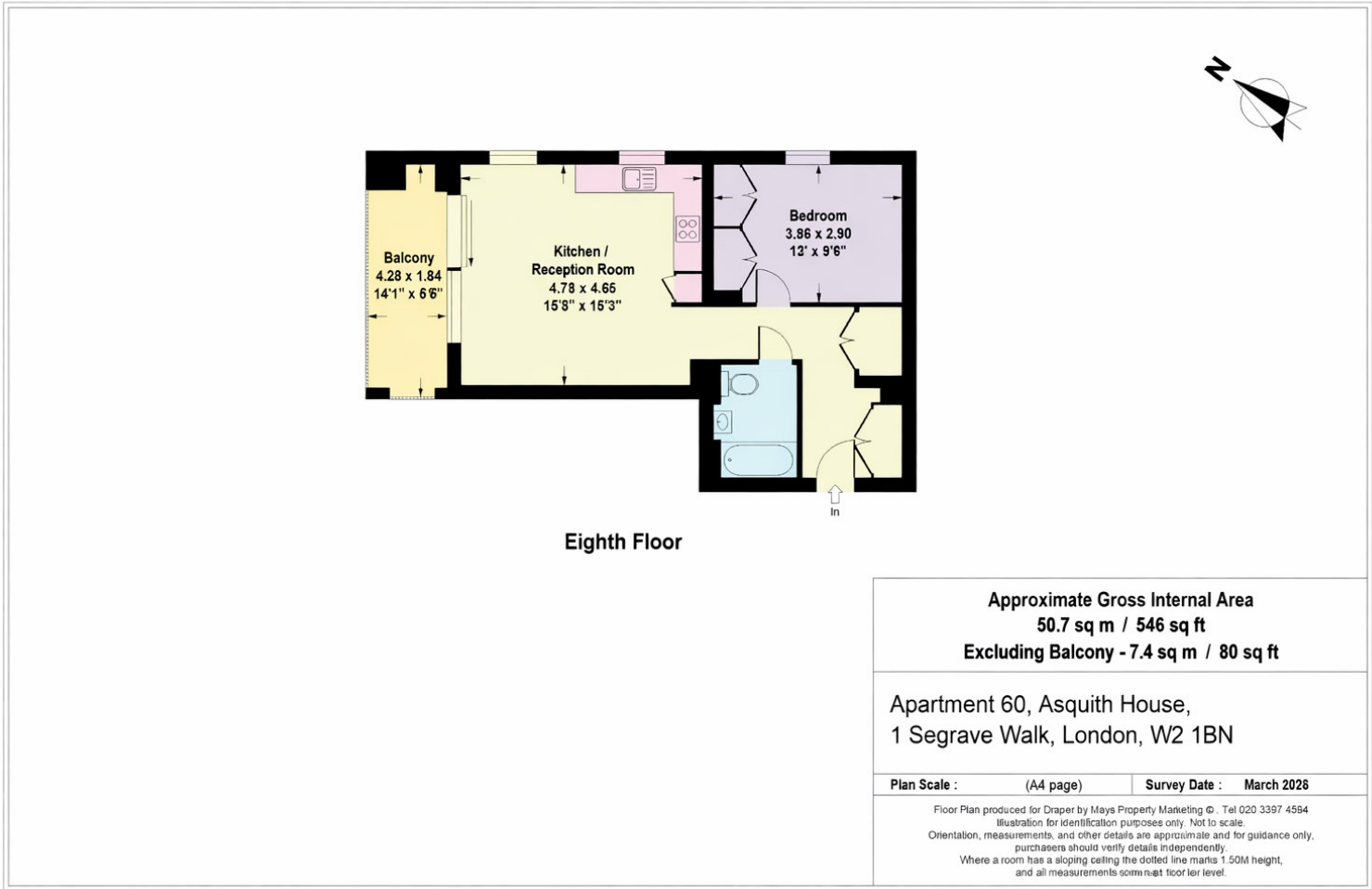




Situated within Asquith House, a modern development in W2, this well-presented one-bedroom apartment offers approximately 549 sq ft of contemporary living space.

Built in 2022, the property features a bright open-plan reception room with a fitted kitchen, a generously sized double bedroom, and a modern bathroom. The apartment has been finished to a high standard throughout, with a clean, contemporary design and benefits from a private balcony.

Ideally located close to Marylebone, the property benefits from excellent access to a wide range of shops, cafés and restaurants, as well as superb transport links, making it well suited to both owner-occupiers and investors.



Council Tax Band **E** EPC Rating **B**

24 Bristol Gardens
 London
 W9 2JQ
 hello@draperlondon.com
 0203 143 1900

