

Great Queen Street, WC2B

£750 Per week

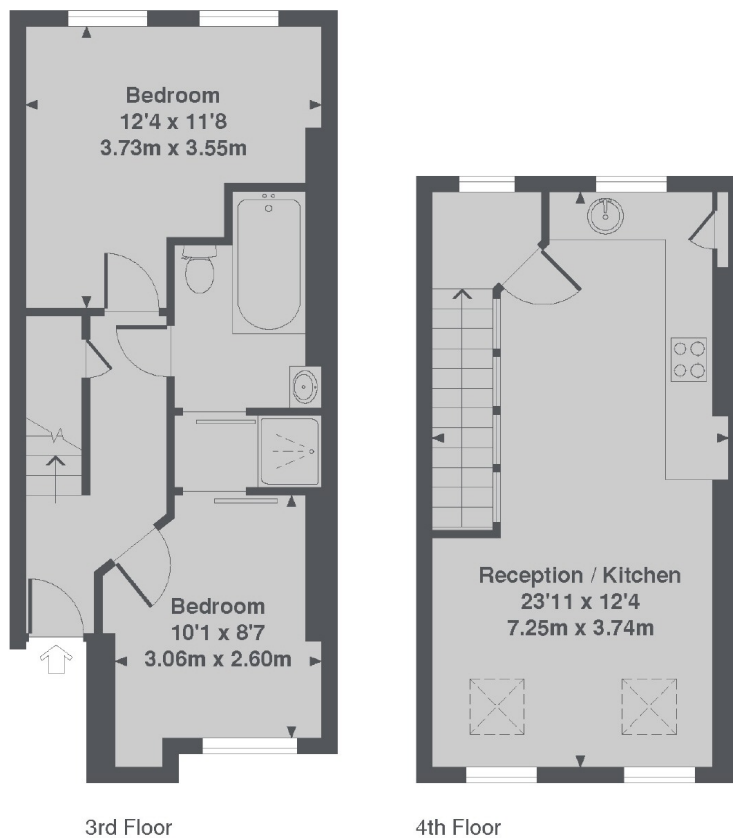
A modern two double bedroom, one bathroom split level apartment over the third and fourth floor of a period conversion with sky lights to the upper floor, and open plan kitchen living area.

Great Queen Street is ideally located to all the shops bars, restaurants and theatres of the West End and less than a quarter mile of Holborn station and Covent Garden station.

Features

- Duplex Apartment
- Wooden Floors
- Open Plan Kitchen
- Furnished
- Double Bedrooms
- One Bathrooms

Great Queen Street, London, WC2B



Great Queen Street, WC2B
Total Approx. Floor area 638 Sq. Ft. (59.3 Sq. M.)