

Hanworth Road, TW3

£325,000

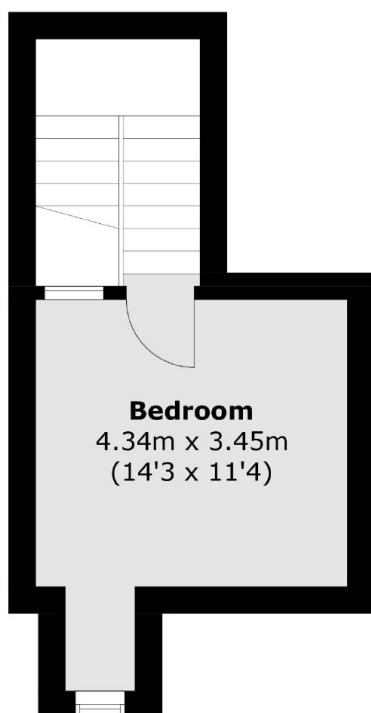
Offered to the market with no onward chain, we are delighted to bring to the market a rare opportunity to acquire this substantial newly refurbished first floor Victorian conversion arranged over two floors. Offering over 800 square feet of living space including two bedrooms, one bathroom, a separate WC, a kitchen and a reception room. Further benefits include a newly extended lease, a driveway for off-street parking and private rear garden making this a fantastic opportunity to acquire a prime property on a sought after road and popular location.

Situated in a sought after location, Hanworth Road is close to excellent local schools, park and transport links. Neighbouring areas of Whitton, Twickenham and Isleworth are all within easy reach.

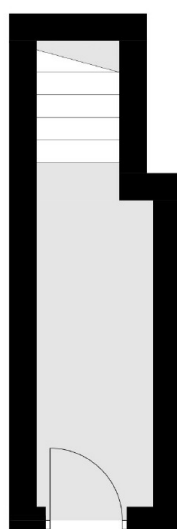
Features

- Split-Level Period Conversion
- Two Double Bedrooms
- Large Private Garden
- Newly Refurbished
- Driveway
- No Onward Chain

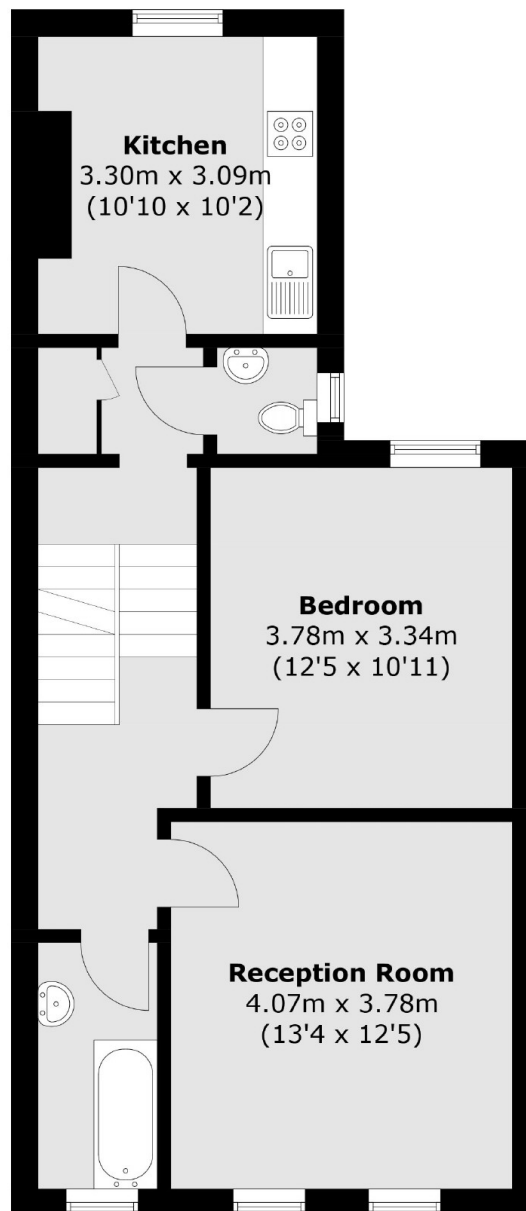
Hanworth Road, Hounslow, TW3



Second Floor



Ground Floor



First Floor

Total area (approx.): 80.0 sq. m (861.1 sq. ft)