



Molesworth Street, SE13

£1,550 Per calendar month

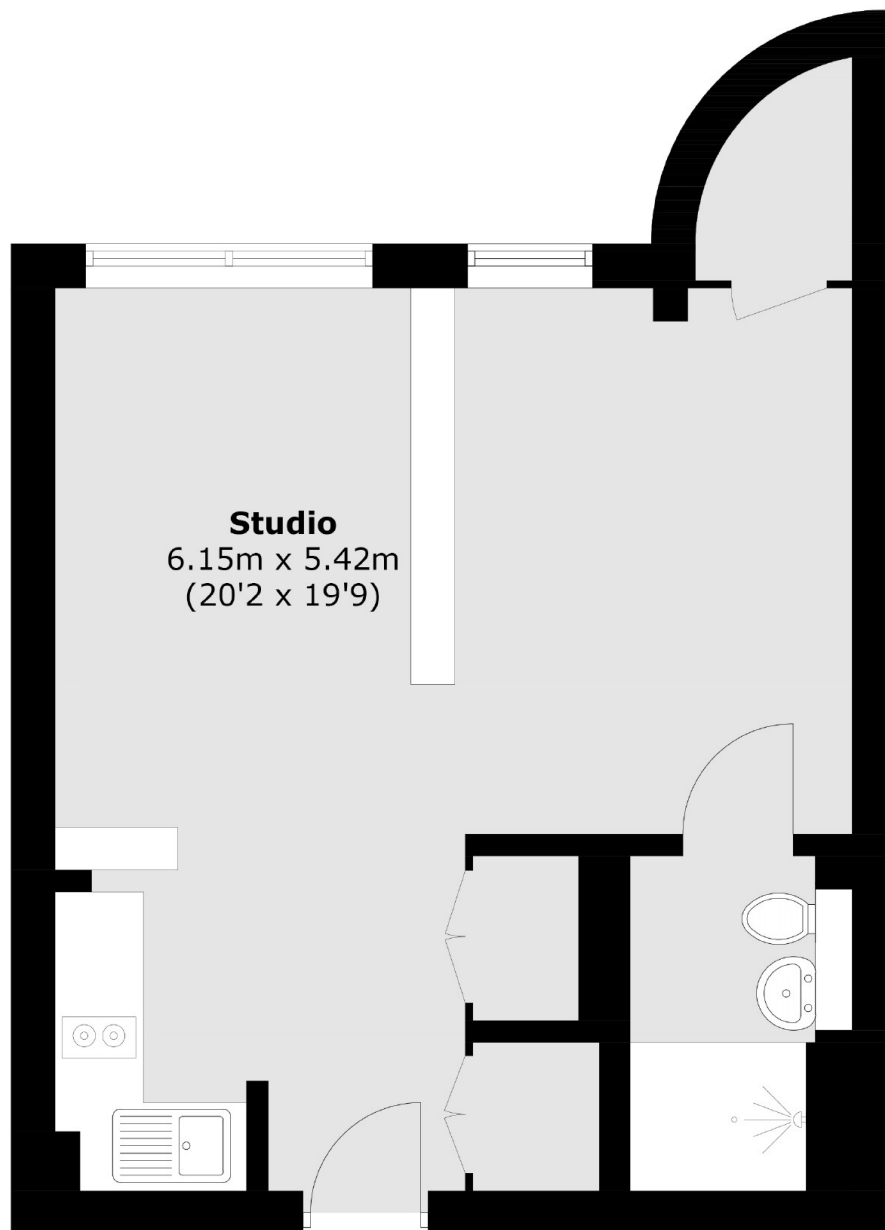
A beautifully presented studio flat offering high-spec modern fixtures and fittings throughout. The property offers wooden flooring throughout, a concierge and access to three roof terraces.

Part of the new Riverdale House development, this fantastic, ground floor studio flat is located a short walk from Lewisham mainline and DLR station so perfect for anyone working in the City or Canary Wharf.

Features

- Studio Flat
- High Specification
- Smart Kitchen
- Wooden Flooring
- Private Development
- Close To Lewisham Station

Molesworth Street,
London, SE13



Total area (approx.): 34.8 sq. m (374.6 sq. ft)