



The Old Workshop, Warminster

£140,000



Key Features

- Recently Refurbished
- Open-plan kitchen living area
- Communal Court Yard
- No Chain
- No Maintenance or Ground Rent
- EPC rating C
- Leasehold



This immaculate terraced flat, offered for sale in the heart of Warminster, presents an outstanding opportunity for investors alike.

Inside, the property boasts a bright and contemporary open-plan layout, seamlessly combining modern pantries provide excellent storage, while generous natural light enhances the sense of space, creating an environment perfectly suited to modern living.

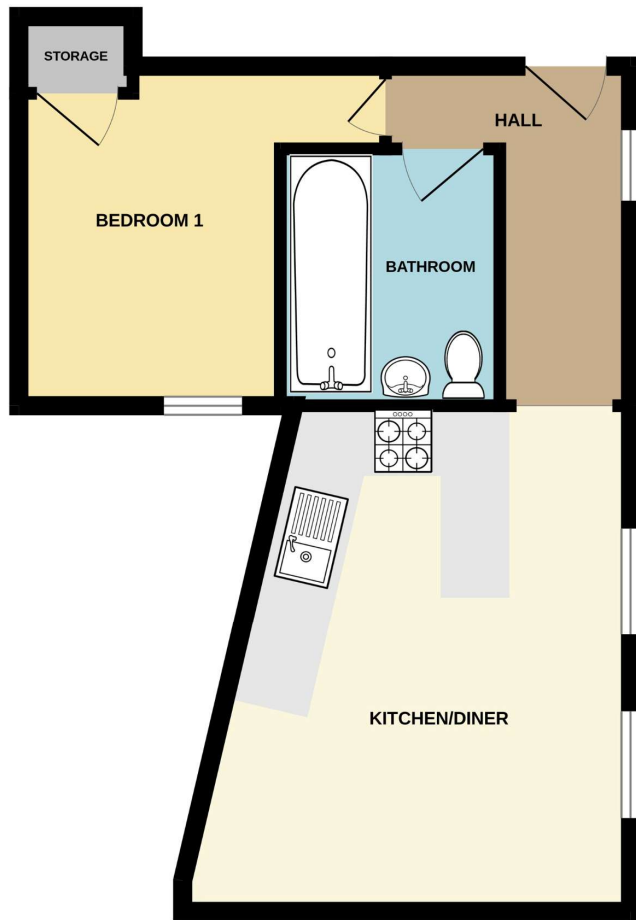
The well-proportioned double bedroom offers comfortable accommodation, complemented by a modern bathroom, finished to a modern standard.

Ideally positioned within Warminster town centre, the flat enjoys immediate access to a wide range of independent shops, cafes and restaurants around the Market Place. Nearby parks, countryside walks and opportunities for outdoor leisure.

Warminster railway station is within easy reach, offering regular services to Salisbury, Bath and approximately 20 minutes to Bath Spa and 40-50 minutes to Bristol Temple Meads. Connections to Westbury, while local bus routes link surrounding towns across Wiltshire and Somerset.

With its central location, stylish open-plan living and strong transport links, this one-bedroom flat is a highly attractive investment property.

GROUND FLOOR
393 sq.ft. (36.5 sq.m.) approx.



TOTAL FLOOR AREA : 393 sq.ft. (36.5 sq.m.) approx.

Whilst every attempt has been made to ensure the accuracy of the floorplan contained here, measurements of doors, windows, rooms and any other items are approximate and no responsibility is taken for any error, omission or mis-statement. This plan is for illustrative purposes only and should be used as such by any prospective purchaser. The services, systems and appliances shown have not been tested and no guarantee as to their operability or efficiency can be given.



01985 220 290

warminster@northwooduk.com