



Moffat House | London | SE5

Leasehold

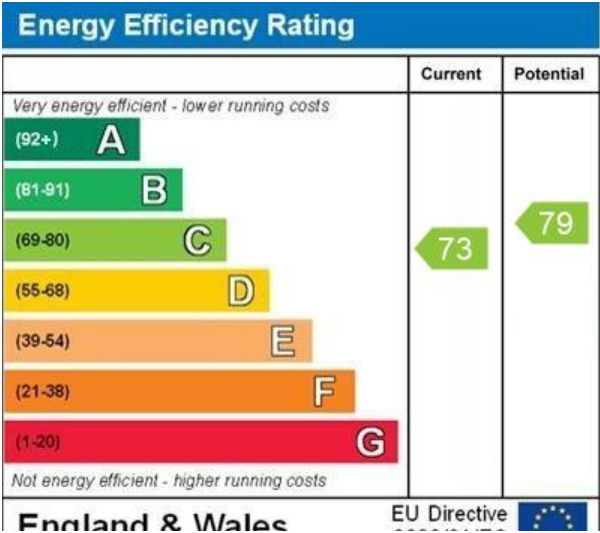
£340,000

- Stylish apartment
- Well presented
- Lots of natural light
- Excellent design
- Communal gardens
- 1930' brick building
- Cork flooring
- Hand made bespoke kitchen
- Overlooking gardens
- Excellent transport

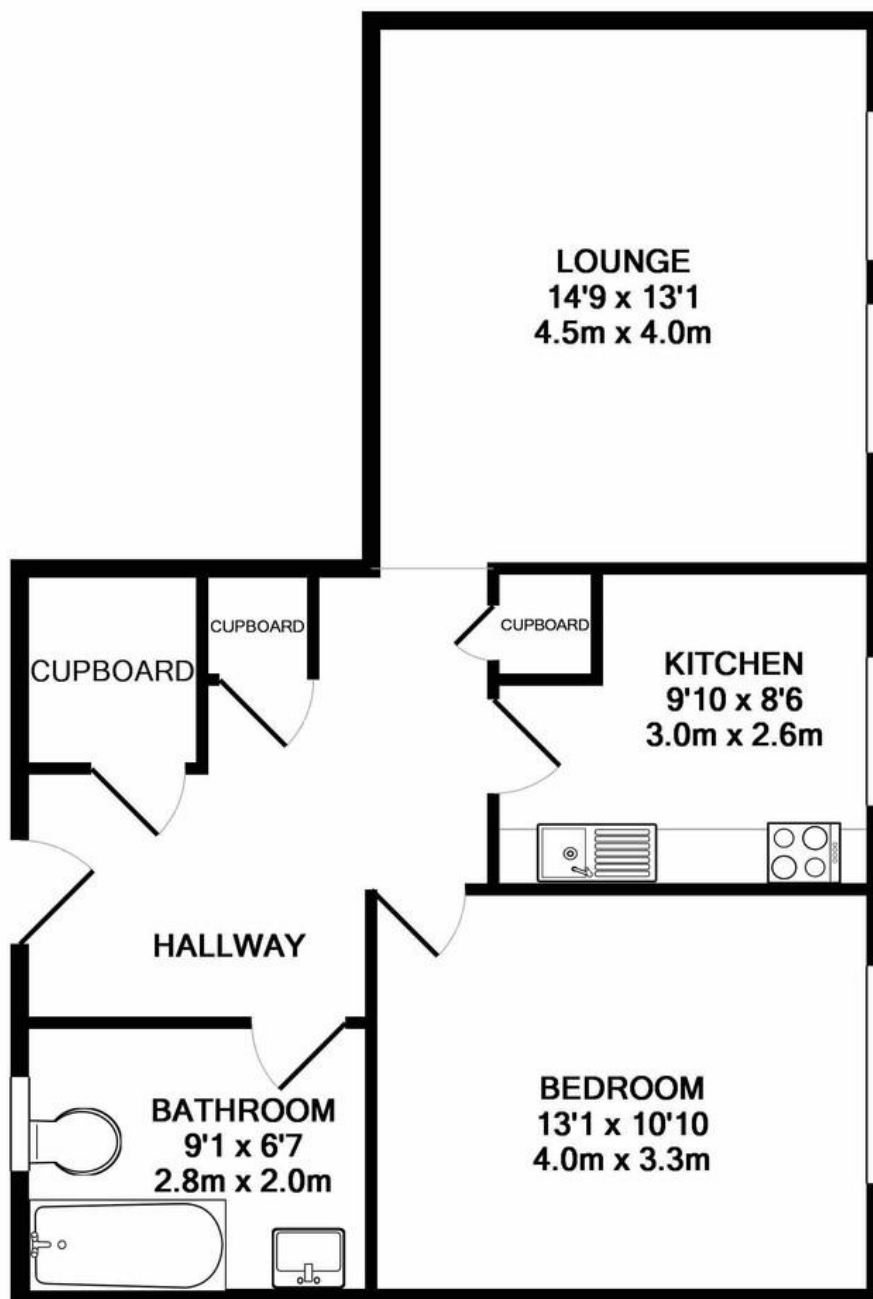




Stylish and spacious 2nd floor apartment in a retro 1930's brick built block. Key design features give this apartment a great feel with a hand made bespoke kitchen, cork flooring and clever storage solutions. There is a large reception room overlooking communal green space, double bedroom with fitted wardrobes, also overlooking the gardens. The kitchen has space for a dining table and the bathroom is well designed and functional. The previous owners adapted a large cupboard in the hallway to form a tiny work-shop or office space, to keep the lounge free of clutter. The place has a great feel with a huge sense of community, walking distance to Oval Tube & Kennington Tube. Walking distance to Camberwell and Burgess Park. A terrific first time buy.







**TOTAL APPROX. FLOOR AREA 637 SQ.FT. (59.2 SQ.M.)**

## Viewing Arrangements

Strictly by appointment

## Contact Details

121 Denmark Hill

London

SE5 8EN

[www.urbanvillagehomes.co.uk](http://www.urbanvillagehomes.co.uk)

[sales@urbanvillagehomes.com](mailto:sales@urbanvillagehomes.com)

020 3519 9121

been made to ensure the accuracy of the floor plan contained here, measurements  
s and any other items are approximate and no responsibility is taken for any error,  
ent. This plan is for illustrative purposes only and should be used as such by any  
e services, systems and appliances shown have not been tested and no guarantee  
as to their operability or efficiency can be given  
Made with Metropix ©2017

Agents Note: Whilst every care has been taken to prepare these sales particulars, they are for guidance purposes only. All measurements are approximate are for general guidance purposes only and whilst every care has been taken to ensure their accuracy, they should not be relied upon and potential buyers are advised to recheck the measurements