



Ewart Drive, Fenwick Park, Bedlington, NE22 6FB

£400,000

**Harpers** | POWERED BY **exp**™ UK  
property people

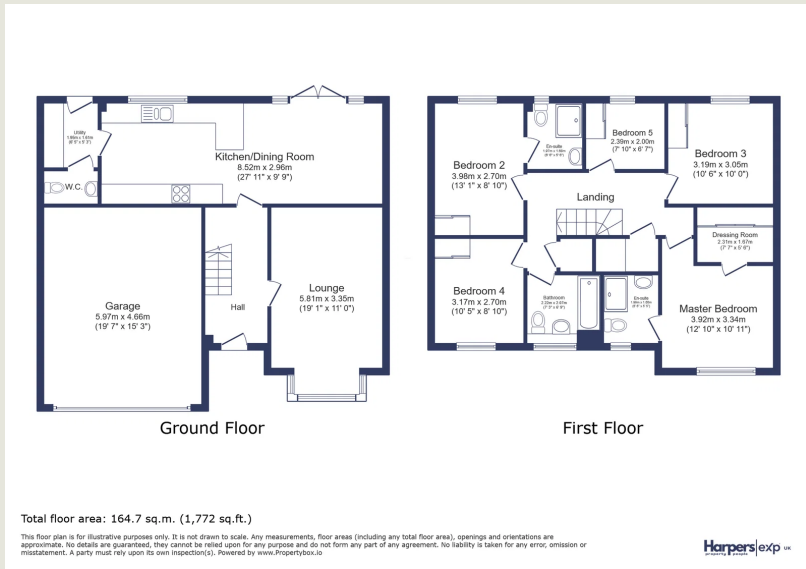
**Bedrooms: 5 | Bathrooms: 3 | Receptions: 2**

Discover this exceptional five-bedroom, three-bathroom detached family home, ideally situated in the sought-after Fenwick Park development in Bedlington, offering spacious and modern living. Step inside to find a home presented in great decorative order throughout. The ground floor features a generous front aspect living room, providing a welcoming space for relaxation and entertaining. The heart of this home is the very well-appointed kitchen/dining room, designed for both functionality and style, offering direct access to the garden and making al fresco dining a breeze. For added convenience, a separate utility room and a ground floor WC are also located on this level. Internal access to the double garage is a practical feature, complementing the triple driveway to the front, which offers ample parking. Upstairs, you will find five well-proportioned bedrooms. The master bedroom is a true highlight, boasting a walk-in wardrobe, while the remaining bedrooms benefit from built-in storage, ensuring a clutter-free environment. In addition to a large family bathroom, the property benefits from two further ensembles, providing comfort and privacy. Externally, the property offers a spacious rear garden and a patio area, perfect for outdoor enjoyment and entertaining. This modern family home provides ample space both inside and out, situated in a desirable residential location. This property offers a fantastic blend of space, modern amenities, and a sought-after location.

- Detached Family Home
- Five Bedrooms (Master With Walk-In Wardrobe, Others With Built-in)
- Large Family Bathroom & Two Further Ensembles
- Generous Front Aspect Living Room
- A Very Well Appointed Kitchen/Dining Room With Direct Garden Access
- Separate Utility Room & Ground Floor WC
- Internal Access To Double Garage Plus Triple Driveway To Front
- Spacious Rear Garden & Patio
- Great Decorative Order Throughout
- Sought After Residential Location







**Harpers Property People**  
 80 Windsor Gardens, Bedlington, NE22 5SY

07813 673 606  
 ali@harpersproperty.com  
<https://harpersproperty.com>

**Harpers** POWERED BY **exp** UK  
 property people