



Henry Doulton Drive, SW17

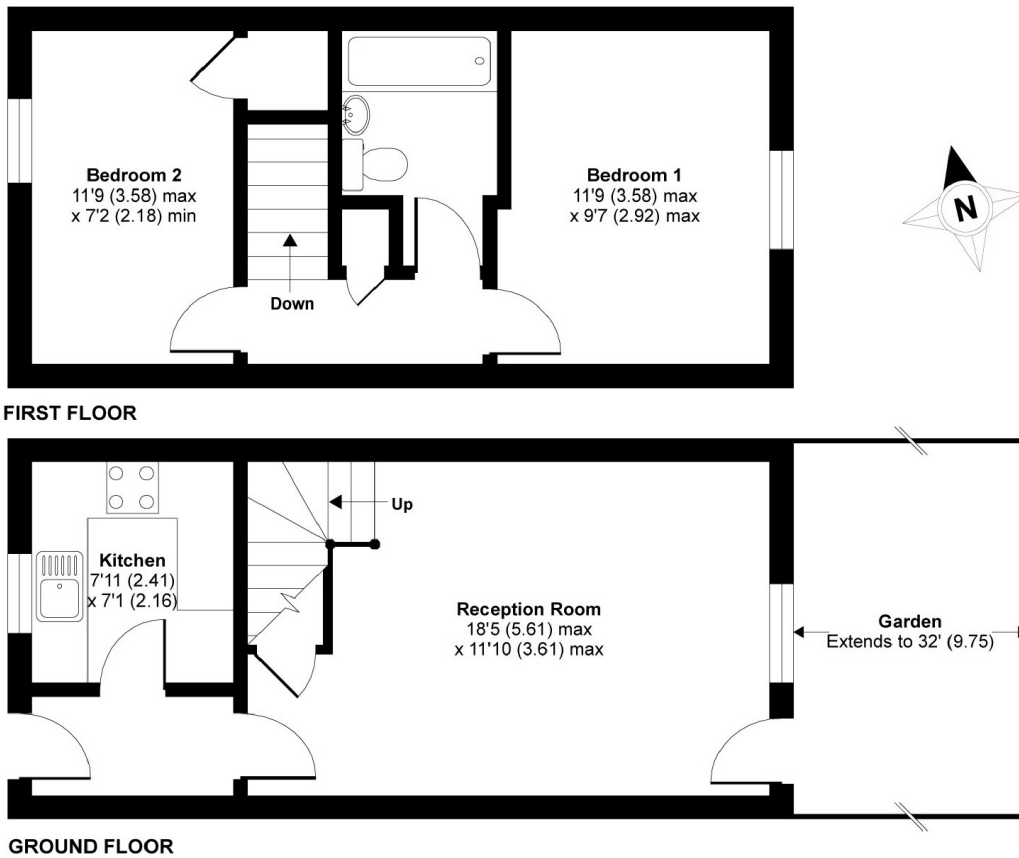
£1,600 PCM

A well presented two double bedroom townhouse located in the popular Heritage Park development with off street parking and private rear garden.

- Terraced House
- Good Size Reception
- Two Double Bedrooms
- Modern Fitted Bathroom
- Large Garden
- Off Street Parking

For further information on the costs associated with renting a property, please pop into our office or visit our website.

Henry Doulton Drive is located within close proximity of Tooting Bec Northern line station and the vast green spaces of Tooting Common.



APPROX. GROSS INTERNAL FLOOR AREA 618 SQ FT 57.4 SQ METRES

Henry Doulton Drive, London, SW17

Copyright nichecom.co.uk 2014 Produced for Jacksons the Independent Estate Agents REF : 586274

Jacksons Tooting
26 Tooting Bec Road
London
SW17 8BD
020 8767 0522
tooting.lettings@jacksonsestateagents.com

Energy Rating: C We aim to make our particulars both accurate and reliable. However they are not guaranteed; nor do they form part of an offer or contract. If you require clarification on any points then please contact us, especially if you're traveling some distance to view. Please note that appliances and heating systems have not been tested and therefore no warranties can be given as to their good working order.