



Holmbush Road, SW15

£4,000 Per calendar month

SHORT LET A beautifully presented two double bedroom garden flat with its own private entrance, offering 914 sq ft of well-balanced living space, ideally positioned on a quiet residential road in the heart of East Putney.

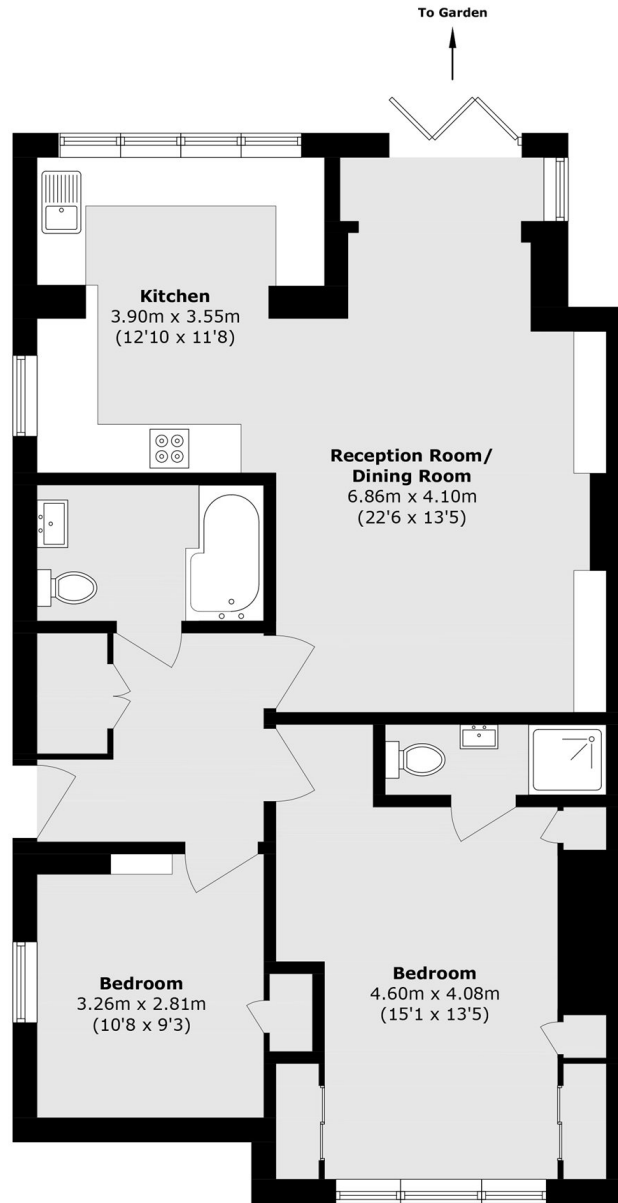
Holmbush Road is a quiet residential street conveniently located close to the cafés, bars, restaurants and shopping facilities of central Putney, as well as excellent transport links including Putney mainline station and East Putney Underground station.

(*These photos have been virtually staged, please rely on the floorplan and your own measurements regarding exactly how furniture would fit in each room)

Features

SHORT LET - 4 months
Two Double Bedrooms
Private Garden
Two Bathrooms
Period Conversion
Excellent Location

Holmbush Road,
London, SW15



Ground Floor

Total area (approx.): 84.9 sq. m (913.9 sq. ft)