

EDEN HOMES

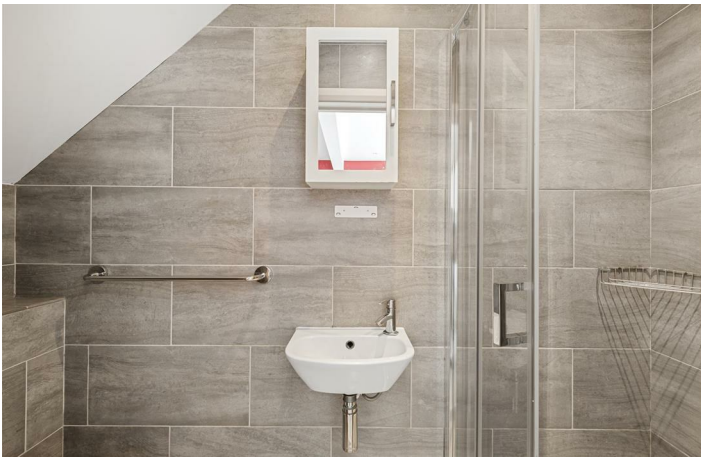


247 Dover House Road, London, SW15 5AF

Asking price £725,000

Situated in the heart of the sought-after Dover House Conservation Area, this beautifully presented three double bedroom end-of-terrace home offers a perfect blend of period charm and modern living. Thoughtfully extended and tastefully renovated, the property is ideal for families and professionals alike. On the ground floor, the home features a bespoke kitchen complete with an island and integrated appliances, designed to meet the needs of contemporary living. The kitchen flows seamlessly into an open-plan living and dining area, filled with natural light and opening via elegant French doors to a private garden with a decked area and lawn — perfect for al fresco entertaining. Upstairs, there are two generously sized double bedrooms, all benefitting from excellent natural light and ample storage. A modern family bathroom serves the upper level, while a convenient downstairs cloakroom adds further practicality and another spacious double bedroom. Additional features include gas central heating, double glazing throughout, and neutral décor, making this a move-in ready home. The location is exceptionally well-connected, with local amenities nearby, easy access to the open spaces of Richmond Park and Putney Heath, and excellent transport links via Barnes Station and local bus routes to Putney and beyond. This is a rare opportunity to acquire a stylish and spacious home in a peaceful, community-oriented setting, with everything South West London has to offer right on your doorstep.







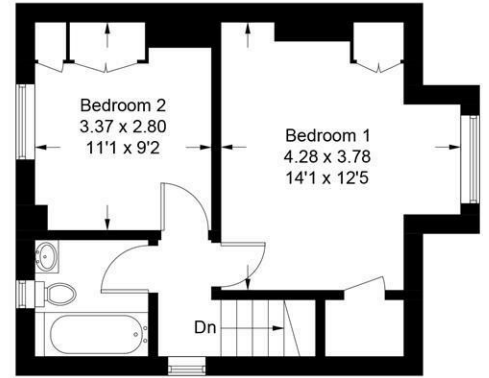
Floor Plan

Dover House Road, SW15

Approximate Gross Internal Area
87.7 sq m / 944 sq ft



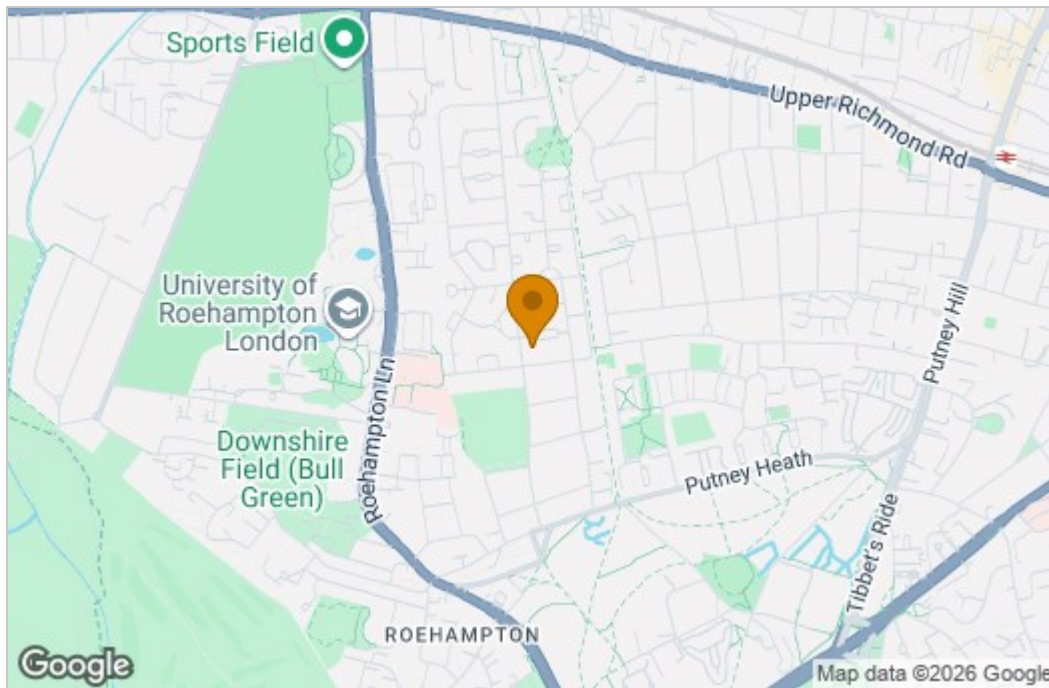
Ground Floor



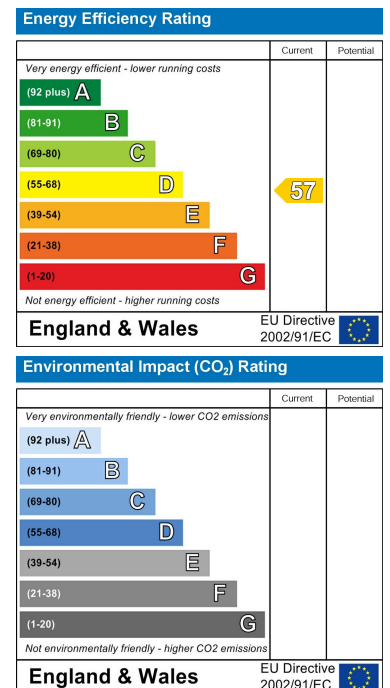
First Floor

This plan is for layout guidance only. Not drawn to scale unless stated. Windows and door openings are approximate. Whilst every care is taken in the preparation of this plan, please check all dimensions, shapes and compass bearings before making any decisions reliant upon them.
Fourlabs.co © (ID1196423)

Area Map



Energy Efficiency Graph



These particulars, whilst believed to be accurate are set out as a general outline only for guidance and do not constitute any part of an offer or contract. Intending purchasers should not rely on them as statements of representation of fact, but must satisfy themselves by inspection or otherwise as to their accuracy. No person in this firm's employment has the authority to make or give any representation or warranty in respect of the property.