



Leighswood Court, Leighswood Road, Aldridge, WS9 8UT - No Upward Chain

£170,000

🛏️ 2 🚿 1 🚗 1



Discover comfortable and convenient living in this well-presented two-bedroom flat, located in the sought-after area of Leighswood Court, Aldridge. Offered with no upward chain, this property is an ideal opportunity for those seeking a practical home in a desirable location.

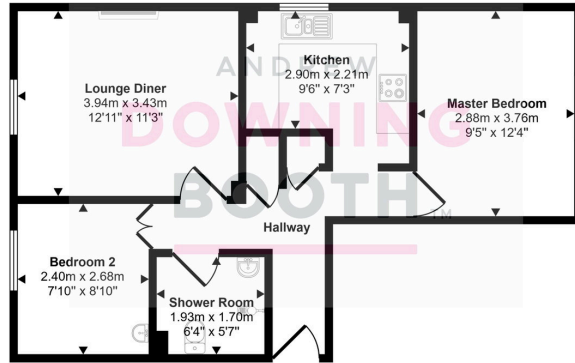
Leighswood Court is situated in Aldridge, offering a blend of local amenities and green spaces. Residents benefit from easy access to local shops, eateries, and recreational facilities. The area provides good transport links, connecting to nearby towns and cities, making it a convenient base for commuting.

The apartment features a welcoming entrance hall, a spacious living room, a fitted kitchen, two comfortable bedrooms, and a wet room. The property also benefits from communal parking.

Internal viewing is recommended to fully appreciate the living space on offer.



Approx Gross Internal Area
52 sq m / 558 sq ft



Floorplan

This floorplan is only for illustrative purposes and is not to scale. Measurements of rooms, doors, windows, and any items are approximate and no responsibility is taken for any error, omission or mis-statement. Icons of items such as bathroom suites are representations only and may not look like the real items. Made with Made Snappy 360.

- Two Bedroom Ground Floor Flat
- No Upward Chain
- Great Location In The Centre Of Aldridge
- Recently Renovated Wet Room
- Communal Parking
- EPC Rating: C
- Council Tax Band: B

