



## Elgin Mews North, W9

£875,000

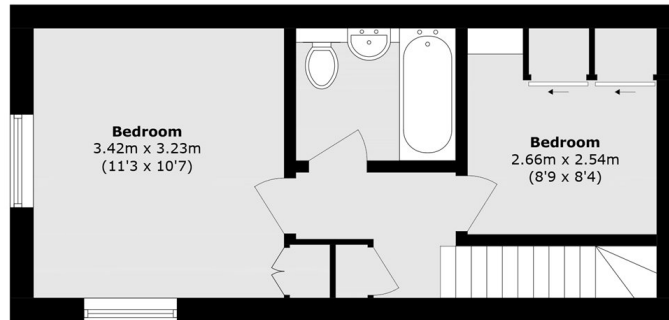
A three storey mews house set in the heart of Maida Vale. This freehold property comes complete with a kitchen leading to a dining room, sizable reception on the mezzanine floor, two double bedrooms and additional WC.

Elgin Mews is right next door to a number of shops along Randolph Avenue and Elgin Avenue, and within walking distance of Paddington Recreation Ground, with Maida Vale underground station (Bakerloo line) right around the corner.

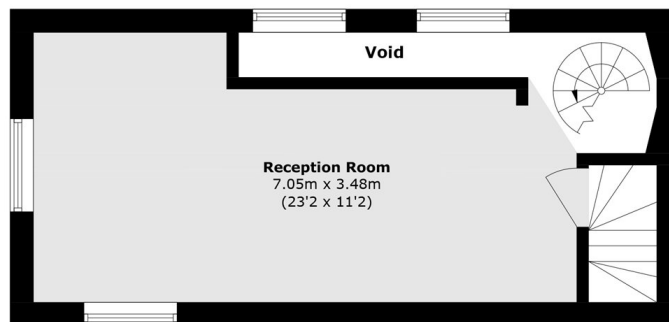
### Features

- Freehold
- Mews House
- Two Double Bedrooms
- Grade II Listed
- Chain Free
- Great Location

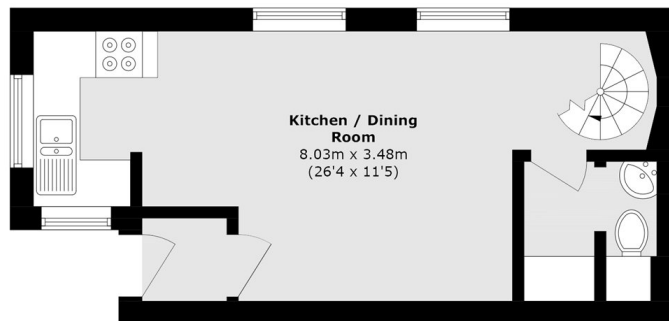
# Elgin Mews North, Maida Vale, W9



**Second Floor**



**First Floor**



**Ground Floor**

Total area (approx.): 76.0 sq. m (818.1 sq. ft)  
(Excluding Void)