



Kensington Court Place, W8

£600 Per week

A one bedroom flat on the ground floor of a listed building ideal for a single professional or couples that want to be located in the heart of Kensington.

Kensington Court Place is positioned just south of High Street Kensington and Hyde Park. There are excellent pubs and restaurants in the nearby area including the Builders Arms and The Ivy.

Features

- One Double Bedroom
- Raised Ground Floor
- Wooden Floors
- Furnished
- Portered Building
- Corner Aspect

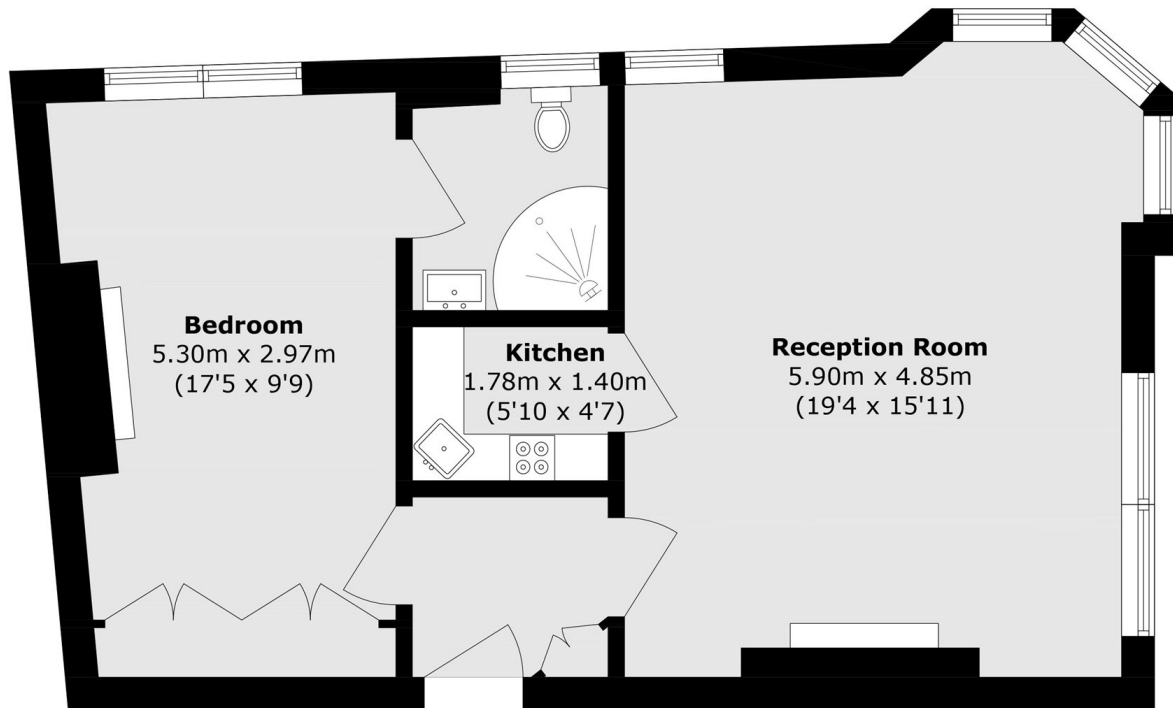


Kensington Court Place, W8

The property enters into a hallway that leads onto either the reception room or the bedroom. The reception room has wooden flooring throughout and charming furniture that goes well with the room's character, the kitchen is separate and just off this room. The bedroom is neutrally decorated throughout with a modern en-suite with shower room.



Kensington Court Place, London, W8



Ground Floor

Total area (approx.): 52.0 sq. m (559.7 sq. ft)