

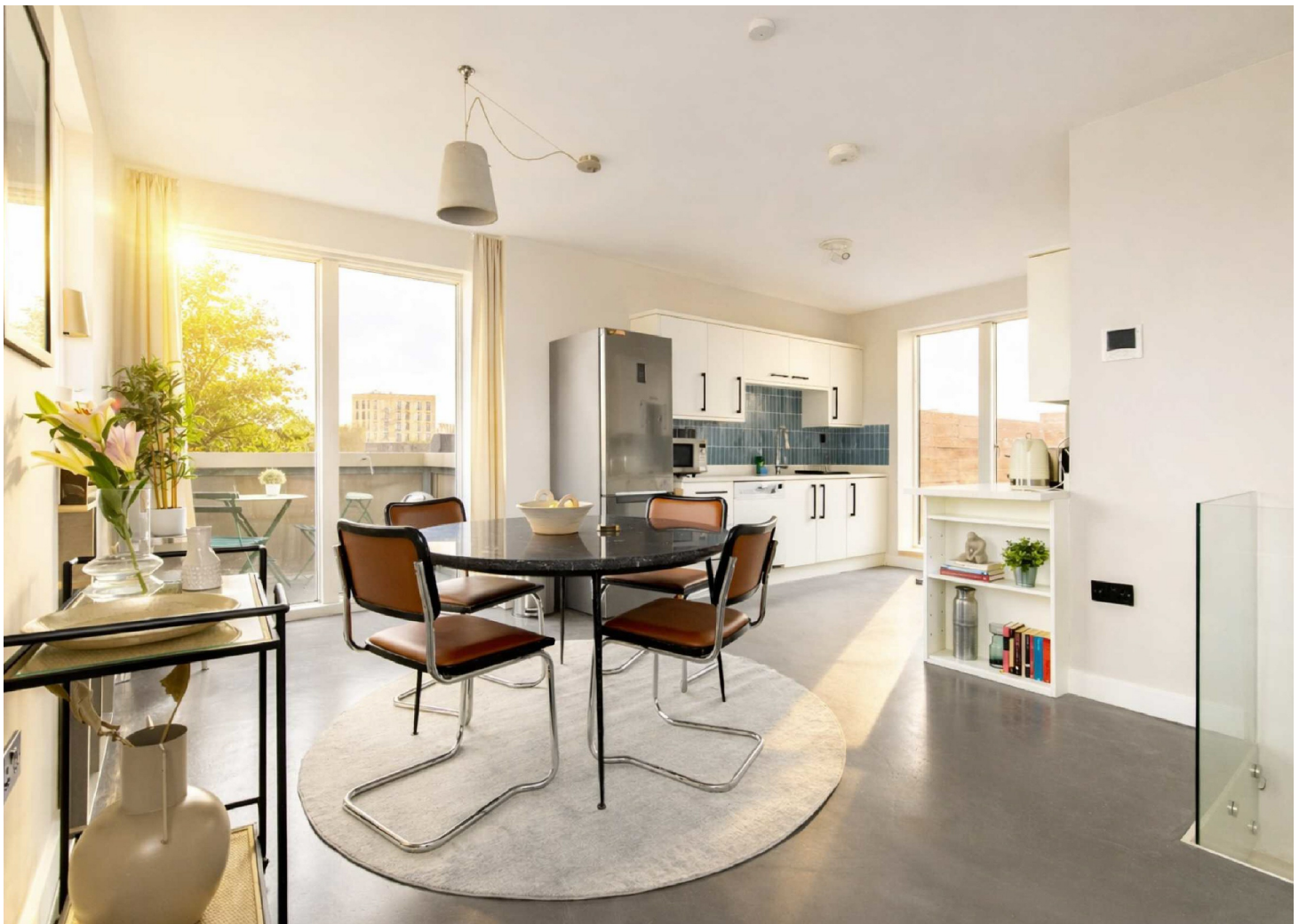


Bevington Road, W10

£800,000

 2  2  1  E

- High Specification
- Duplex Layout
- Roof Terrace
- Three Balconies
- Lift Access
- Excellent Location



ABOUT THE PROPERTY

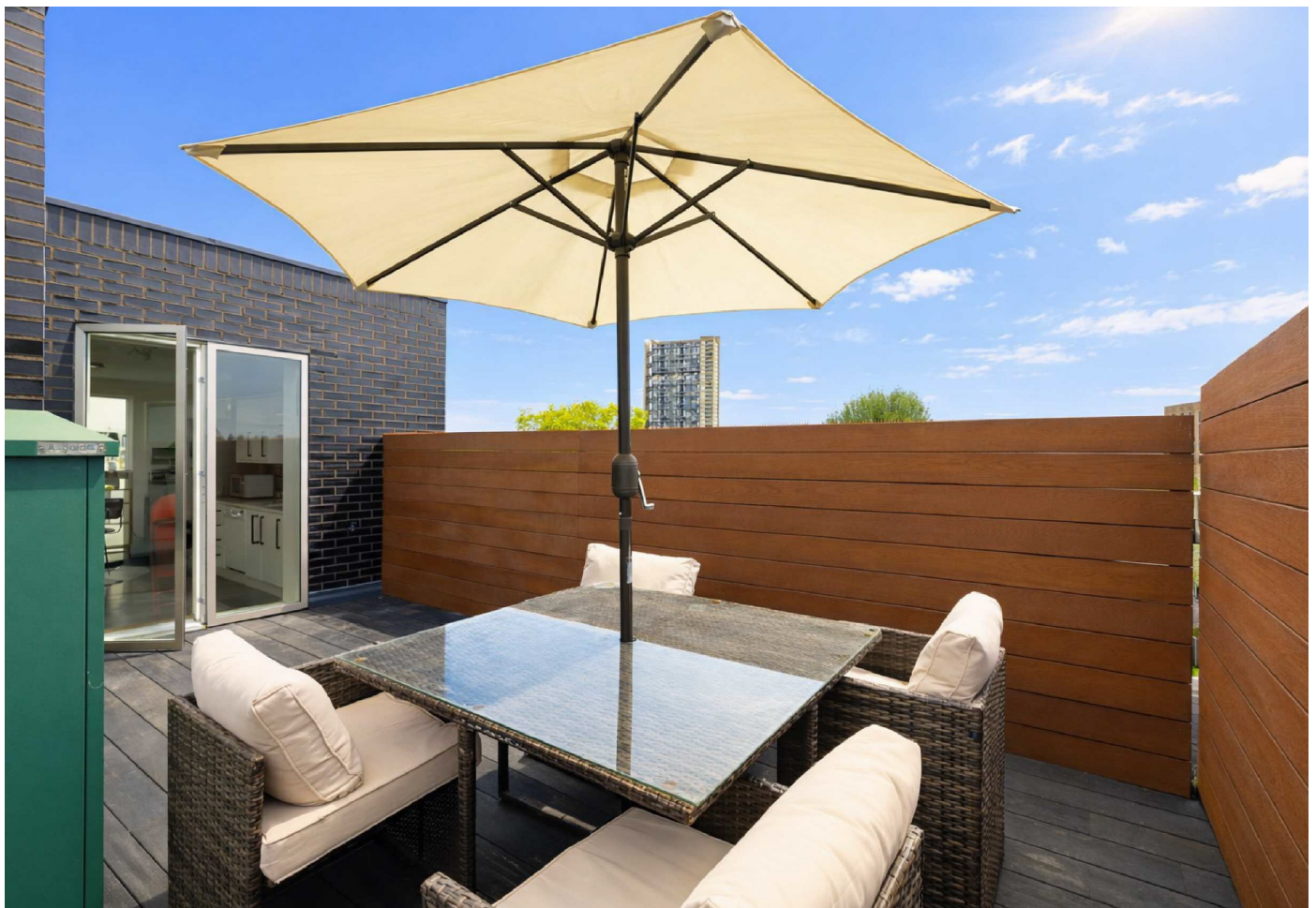
A beautifully presented two bedroom duplex apartment arranged over the top floors of a modern building with lift access, multiple balconies and a private roof terrace.

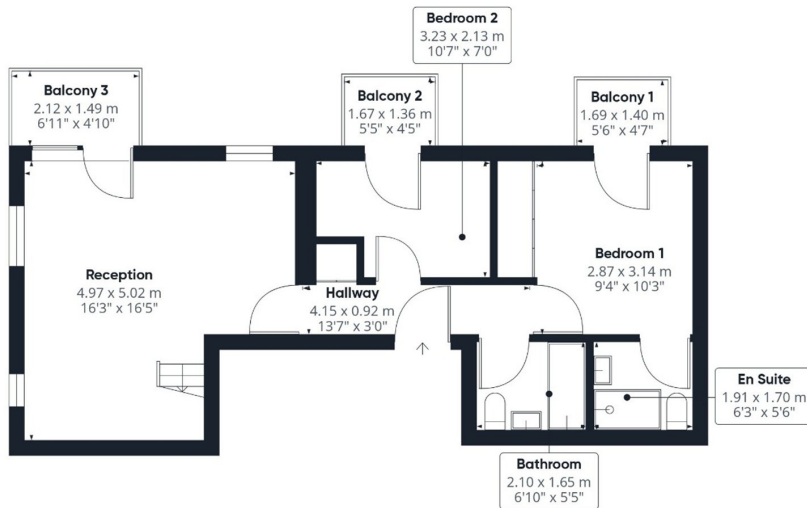
The upper floor features a stylish kitchen and dining area finished to a high standard with modern units and terrazzo-style flooring, leading directly onto a generous roof terrace ideal for entertaining.

The lower level includes a bright reception room, two double bedrooms and two bathrooms, each with access to a private balcony, allowing plenty of natural light throughout.

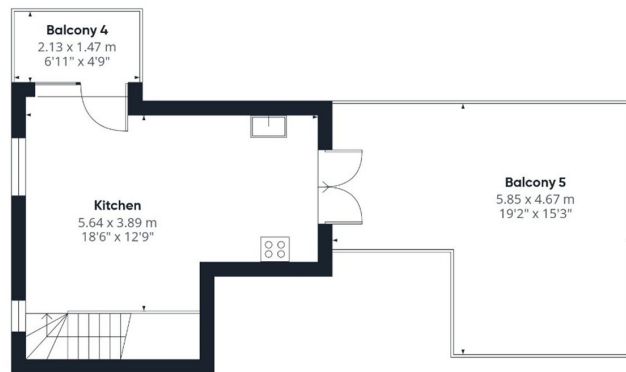
Positioned within a contemporary lift-serviced development close to Golborne Road, this apartment combines smart design with modern living, offering a superb opportunity to enjoy one of West London's most vibrant neighbourhoods.

Bevington Road is a quiet street in North Kensington, perfectly placed for the cafés and boutiques of Golborne Road and Portobello Market, with Ladbroke Grove station nearby.





Floor 0



Floor 1

Gross Internal Area (1)
102.2 m²/1100 ft²

Balconies and terraces
33 m²/355 ft²

Total Area
135.2 m²/1455 ft²

(1) Including balconies and terraces

Calculations reference the IPMSC IPMS 4.2 standard. Measurements are approximate and not to scale. This floor plan is intended for illustration only.

GIRAFFE360

Marsh & Parsons North Kensington

110 Ladbrooke Grove, London,
W10 5NE
020 7313 8350

We aim to make our particulars both accurate and reliable. However, they are not guaranteed; nor do they form part of an offer or contract. If you require clarification on any points then please contact us, especially if you're traveling some distance to view. Please note that appliances and heating systems have not been tested and therefore no warranties can be given as to their good working order.