



16 Portree Walk  
Corby, Northants NN17 2QY

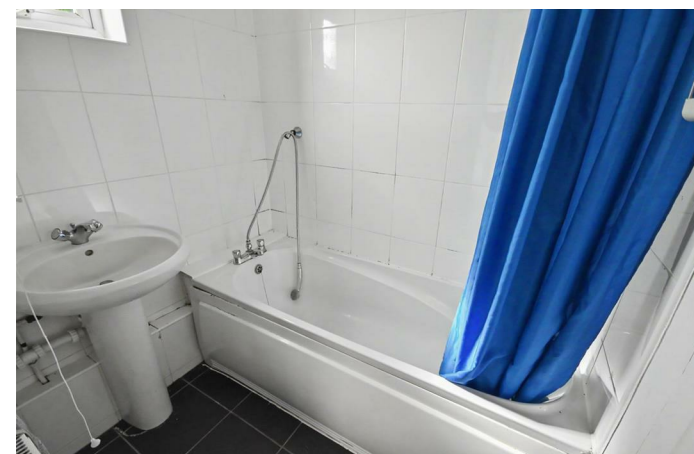


**Simpson West**

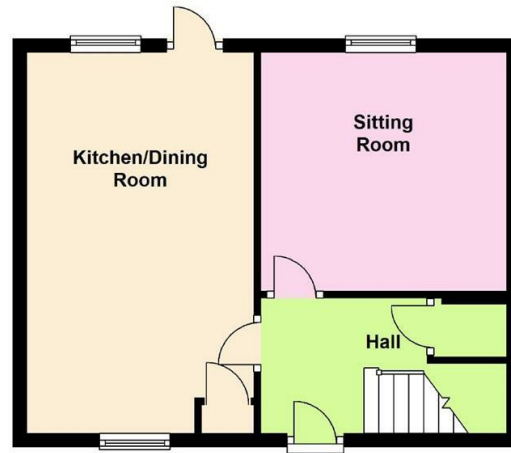
Simpson West Lettings are delighted to offer for rent this spacious two double bedroom house which is situated on the highly sought after Lodge Park area of Corby. The property boasts entrance hall with storage cupboard, lounge, good sized kitchen/diner with patio doors leading to the rear garden. Upstairs there are two double bedrooms and a family bathroom. Outside there is a fully enclosed rear garden. Viewing is highly recommended. Energy Rating C. Council Tax Band A.

£895 PCM

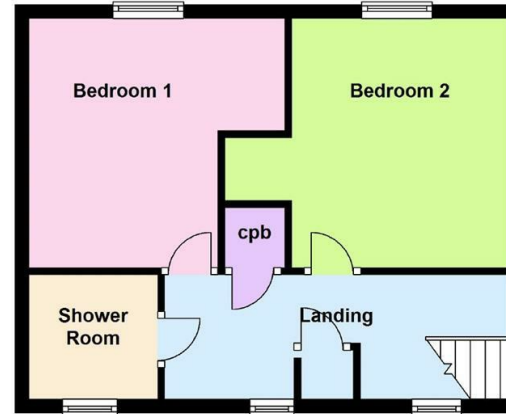
 2  1  1



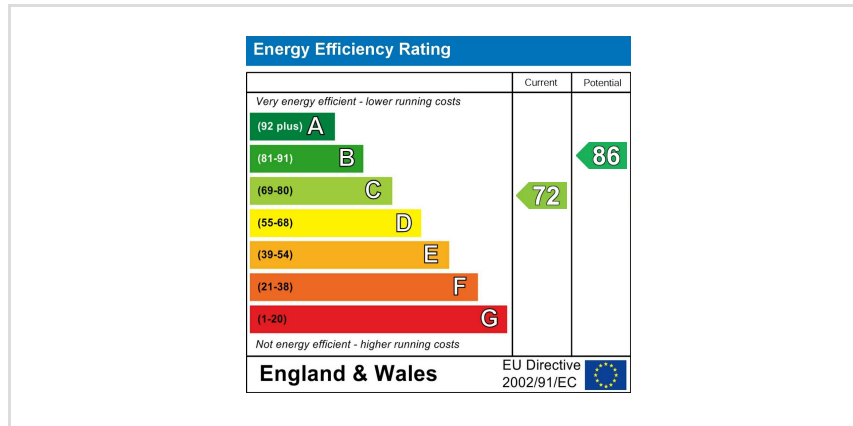
Ground Floor



First Floor



Floor plan not to scale - for guidance purposes only.  
Plan produced using PlanUp.



When you buy with Simpson West, you know **you'll be in safe hands**. From the moment you walk through our doors, we'll make you **feel truly welcome**. Our sales consultants and financial advisors will take you through **every step of the process**, offering **free expert advice** along the way, from help choosing the right mortgage and insurance through to finding your conveyancer. And if you need help selling your home too, **with over 20 years of local experience, you can trust us to get you moving**.



**Simpson  
West**

Making Every  
Journey Personal



01536 202007

[info@simpsonwest.co.uk](mailto:info@simpsonwest.co.uk)

<https://www.simpsonwest.co.uk/>

64 Corporation Street, Corby, Northants, NN17 1NH