



Colindeep Gardens, NW4

£2,300 Per calendar month

Dexters



Colindeep Gardens, NW4

A beautifully presented two-bedroom duplex apartment set over the first and second floors of a newly converted development. The first floor offers a bright open plan with fully fitted kitchen, good storage and a modern shower room. The top floor offers two double bedrooms and a family bathroom.

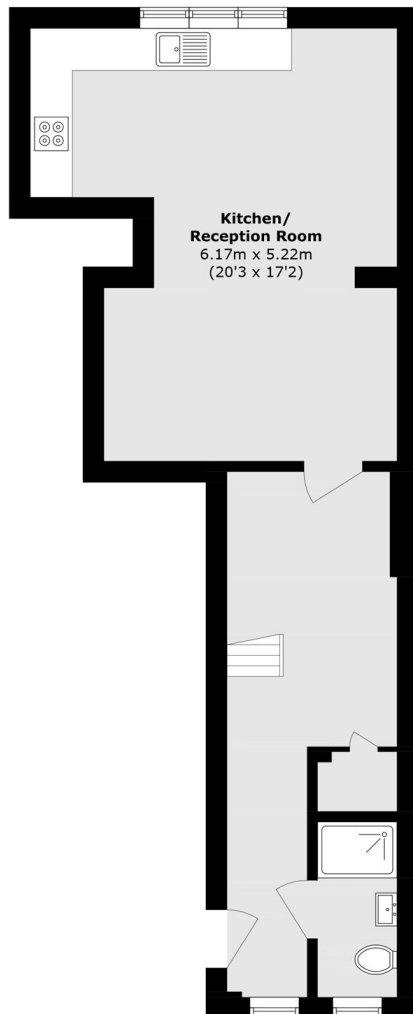
Colindeep Gardens is a residential street just moments away from Hendon Central Station offering excellent access to the city via the Northern Line.

Features

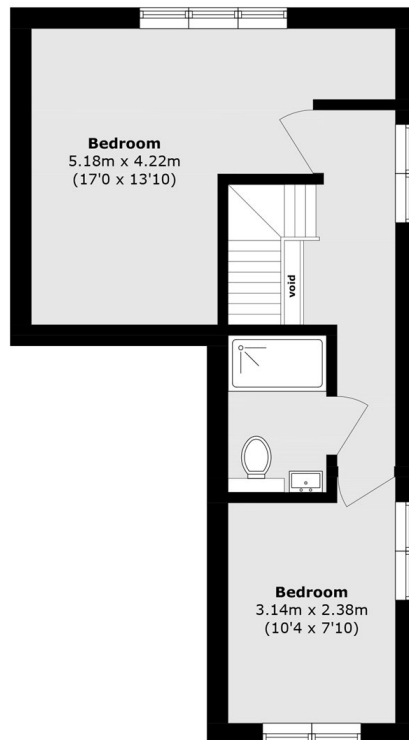
- Newly Renovated throughout
- Two Bedrooms
- Two Floors
- Private rear patio
- Off street parking
- Wood Flooring



Colindeep Gardens, LONDON, NW4



Ground Floor



First Floor

Total area (approx.): 80.9 sq. m (870.8 sq. ft)
(Excluding Void)