



10 Mill Court, Longridge  
£199,950

**Holdens**  
ESTATE AGENTS



## 10 Mill Court

Longridge, Preston

Beautifully presented 3 bed end terrace (1 bedroom currently a dressing room). Lounge, Conservatory, Kitchen, 2 parking spaces. Ideal for first time buyers. Move-in ready. Viewing recommended.

Council Tax band: C

Tenure: Freehold

EPC Energy Efficiency Rating: C

EPC Environmental Impact Rating:

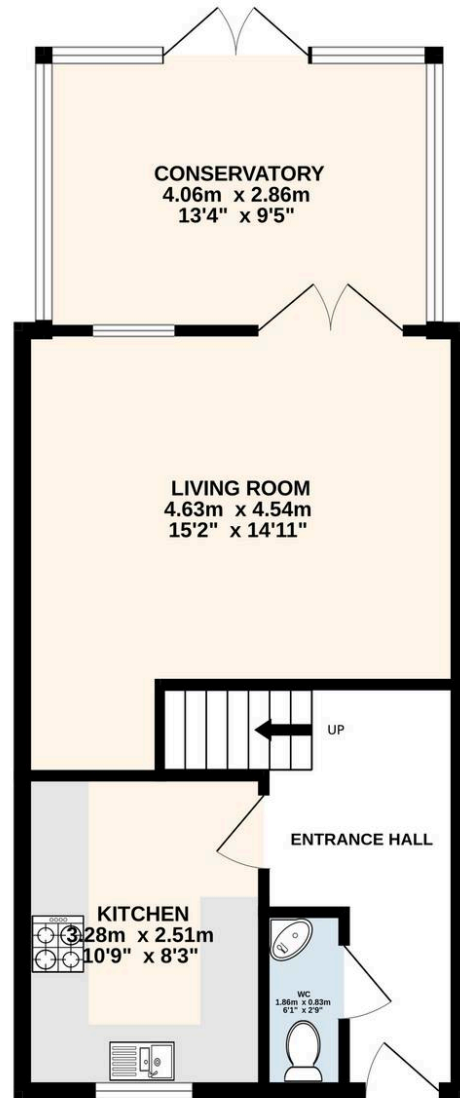
- End terrace home
- Ideal first home
- Beautifully presented living room
- Spacious conservatory
- Bright kitchen
- 3 bedrooms (one currently used as a dressing room)
- Modern family bathroom
- Lovely private rear garden
- 2 parking spaces
- Sought after convenient Location



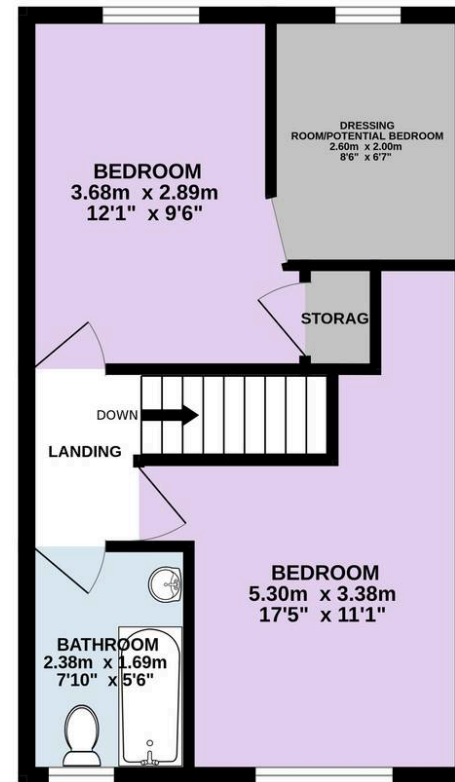




GROUND FLOOR  
47.5 sq.m. (511 sq.ft.) approx.



1ST FLOOR  
35.9 sq.m. (386 sq.ft.) approx.



TOTAL FLOOR AREA: 83.4 sq.m. (898 sq.ft.) approx.

Every attempt is made to ensure accuracy, however all measurements are approximate. This plan is for illustrative purposes only and is not to scale.  
Made with Metropix ©2026



Holdens  
ESTATE AGENTS

## Holdens Longridge

66 Derby Road, Longridge - PR3 3FE

01772 233380

[longridge@holdens.co.uk](mailto:longridge@holdens.co.uk)

[www.holdens.co.uk/](http://www.holdens.co.uk/)

Disclaimer: All information such as plans, dimensions, and details about the property's condition or suitability is provided in good faith and believed to be accurate, but should not be relied upon without independent verification. Buyers or tenants must carry out their own checks. Appliances and systems haven't been tested. It's strongly advised to get professional inspections before making any commitments. No employee or agent of Holdens Estate Agents is authorised to make promises or guarantees about the property. These details are for general guidance only and do not form part of any contract. All discussions with Holdens Estate Agents are subject to contract.