



Connells

Woodville Close
Chineham Basingstoke



Property Description

Chineham is a highly sought-after residential suburb located just a few miles northeast of Basingstoke in Hampshire. Known for its family-friendly atmosphere and well-planned layout, the area offers a perfect balance between modern suburban living and convenient access to nearby towns and transport links.

At the heart of the area is the Chineham District Centre, offering a wide range of everyday conveniences including supermarkets, retail outlets, and services. Chineham also hosts a large business park, providing local employment opportunities and contributing to a vibrant local economy.



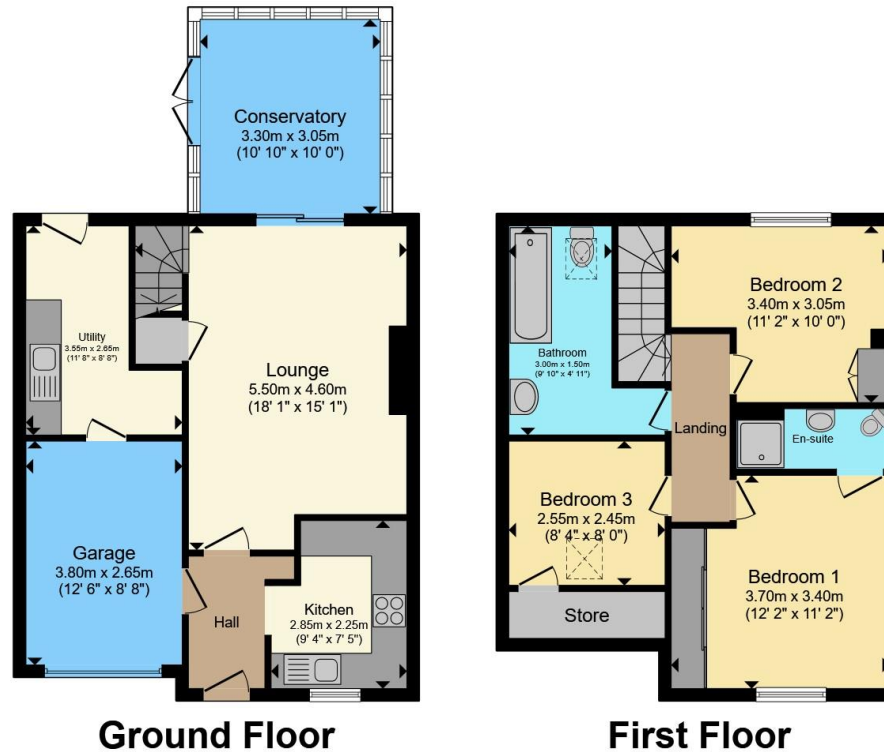
One of Chineham's key selling points is its excellent connectivity being close to the A33 linking Reading and Basingstoke, easy access to the M3 motorway, regular bus services into Basingstoke town centre with rail connections from Basingstoke to London. This makes it ideal for commuters seeking a quieter home environment without sacrificing accessibility.

AGENTS NOTE: There is an ongoing subsidence claim affecting the conservatory. Monitoring and mitigation activities are underway, with an estimated resolution completion date of March 2027. Surveys have identified no other affected areas. The asking price has already been adjusted to reflect the conservatory subsidence issue and the ongoing claim process.









Total floor area 108.5 m² (1,168 sq.ft.) approx
 This floor plan is for illustrative purposes only. It is not drawn to scale. Any measurements, floor areas (including any total floor area), openings and orientation are approximate. No details are guaranteed, they cannot be relied upon for any purpose and they do not form part of any agreement. No liability is taken for any error, omission or misstatement. A party must rely upon its own inspection(s). Powered by www.propertybox.io



To view this property please contact Connells on

T 01256 464566
E basingstoke@connells.co.uk

1 Wote Street
 BASINGSTOKE RG21 7NE

EPC Rating: Council Tax
 Awaited Band: D

Tenure: Freehold

view this property online connells.co.uk/Property/BTK314918



1. MONEY LAUNDERING REGULATIONS Intending purchasers will be asked to produce identification documentation at a later stage and we would ask for your co-operation in order that there will be no delay in agreeing the sale. 2. These particulars do not constitute part or all of an offer or contract. 3. The measurements indicated are supplied for guidance only and as such must be considered incorrect. Potential buyers are advised to recheck measurements before committing to any expense. 4. We have not tested any apparatus, equipment, fixtures, fittings or services and it is in the buyers interest to check the working condition of any appliances.

Connells Residential is registered in England and Wales under company number 1489613, Registered Office is Cumbria House, 16-20 Hockliffe Street, Leighton Buzzard, Bedfordshire, LU7 1GN. VAT Registration Number is 500 2481 05.

See all our properties at www.connells.co.uk | www.rightmove.co.uk | www.zoopla.co.uk

Property Ref: BTK314918 - 0003