



## Goldsmiths Avenue, Corringham

Offers Over £375,000



- Extended Three-Bedroom Semi-Detached Home – Offering generous space for modern family living.
- No Onward Chain – A rare opportunity for a smooth and hassle-free purchase.
- Inviting Entrance Hallway – Welcoming space that sets the tone for the home's layout.
- Spacious Lounge – Perfect for relaxing, entertaining, or cozy family evenings.
- Well-Appointed Kitchen – Stylish and functional, ideal for everyday cooking and meal prep.
- Modern Ground-Floor Bathroom – Contemporary design with practical layout for family convenience.
- Three Generously Proportioned Bedrooms – Flexible accommodation to suit families, guests, or a home office.
- Driveway Parking and Garage – Provides secure parking and additional storage space.
- Well-Maintained Rear Garden – Private outdoor space for entertaining, gardening, or relaxing.
- Prime Location in Corringham – Close to local amenities, schools, and transport links, combining convenience with a desirable residential setting.



## Goldsmiths Avenue, Corringham – Extended Three-Bedroom Semi with No Onward Chain

**Looking for a home that gives you space, style, and zero waiting around? This extended three-bedroom semi-detached gem in Corringham is ready to move into with no onward chain—just bring your furniture and your ideas.**

Step inside to an inviting entrance hallway, leading into a lovely-sized lounge that's perfect for movie nights, family gatherings, or just claiming your corner of comfort. The well-appointed kitchen makes cooking feel effortless, while the modern ground-floor bathroom adds practicality without compromising style.

Upstairs, you'll find three great-sized bedrooms, offering plenty of room for sleep, work, or a hobby corner that doesn't get in anyone's way.

Outside, the property delivers driveway parking and a garage, plus a well-maintained rear garden that's ready for weekend barbecues, gardening experiments, or simply soaking up the sun.

A rare combination of space, location, and move-in readiness, this home on Goldsmiths Avenue is ideal for families or anyone seeking a practical yet charming property in a popular area.

Why wait? This one is ready when you are.

### Area Guide – Corringham

Corringham is a well-established residential area in Thurrock, prized for its blend of community charm, accessibility, and family-friendly environment. The area benefits from a range of local amenities including shops, cafés, and schools, making everyday life convenient for residents of all ages.

For commuters, excellent road links are on hand, with the A13 providing direct access to London and surrounding areas, while nearby Thurrock railway station and other local stations ensure rail connections are within easy reach.

Families will appreciate the variety of schooling options and nearby parks, while green spaces and local leisure facilities offer opportunities for outdoor activities and weekend exploration. With its combination of connectivity, community, and convenience, Corringham remains a highly desirable location for first-time buyers, families, and professionals alike.



#### THE SMALL PRINT:

Local Authority: Thurrock  
Council Tax Band: D

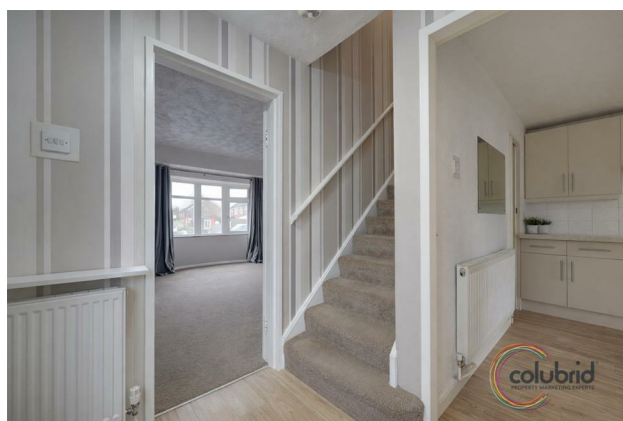
We've done our homework, but we aren't fortune tellers. We haven't poked the boiler, flicked the switches, or tested every light bulb. Nothing here counts as a contract or statement of fact—get your solicitor to check all the serious stuff, like tenure, parking, planning permission, building regs, and all that jazz!

Measurements? Guides only. Floorplans? Handy, but not perfectly to scale. Travelling far? Call first—clarification is free, petrol is not.

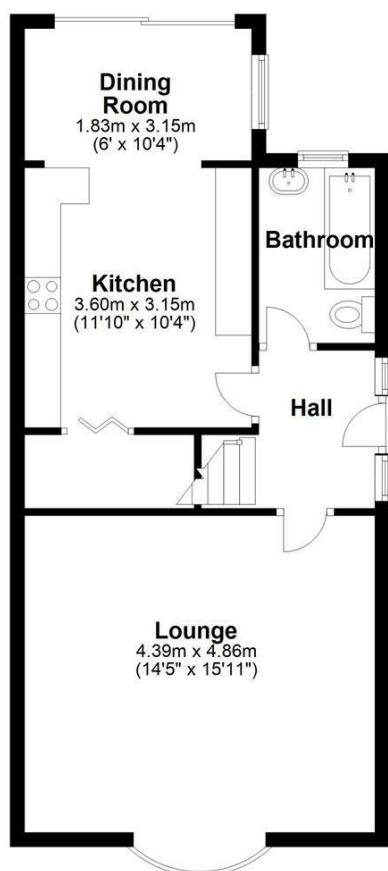
We may receive a referral fee if you choose to use third-party services we recommend, such as conveyancers, mortgage advisers, or EPC providers, but you are under no obligation to do so.

AML Checks - Law says we must run one. £80 + VAT per buyer. Tiny toll, big compliance.

Buyer Reservation Fee - Offer accepted? Pay a reservation fee (min £1,000) to lock it in. VIP pass to the property, protects against gazumping. Complete the sale? Fee refunded. Things go sideways? Sometimes non-refundable. Head to our website for full details – or skip the scrolling and just call.



**Ground Floor**



**First Floor**

