



25 Exeforde Avenue, Ashford, TW15 2EF

£3,300 Per Month

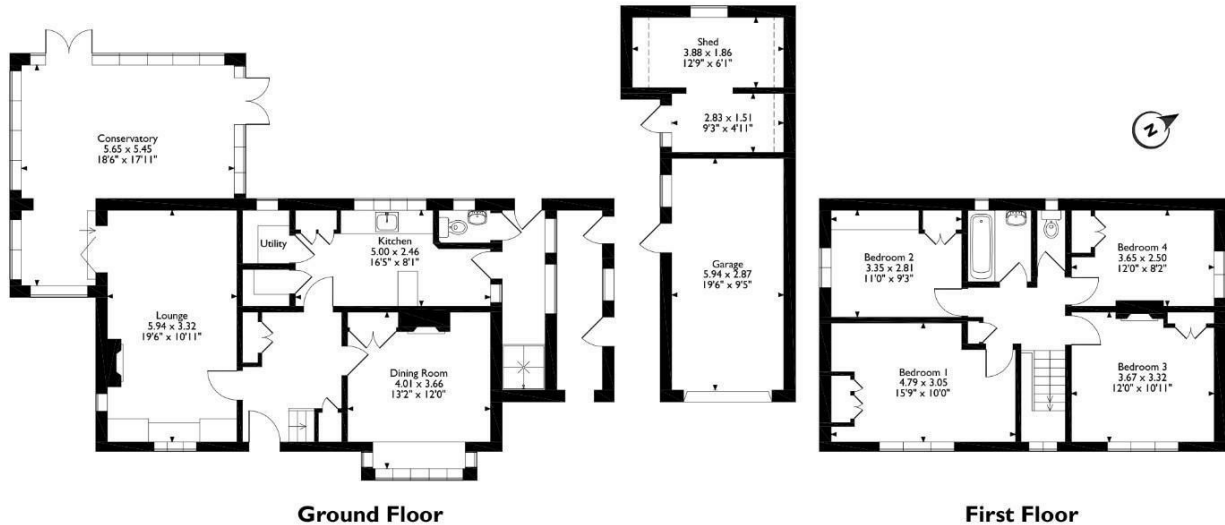
25 Exeforde Avenue, Ashford, TW15 2EF

This large family home is available now and offers four bedrooms, two bathrooms and two spacious reception rooms to entertain friends and family. The property has a well maintained back garden, garage and off street parking all within easy access to local transport links and town centre. Please call Aspen Estate Agents to book your viewing while we have availability.



Floor Plan

25, Exeforde Avenue, Ashford, Surrey
 Approximate Gross Internal Area
 Main House = 149 Sq M/1604 Sq Ft
 Garage/Outbuilding = 29 Sq M/312 Sq Ft
 Total = 178 Sq M/1916 Sq Ft



Ground Floor

First Floor

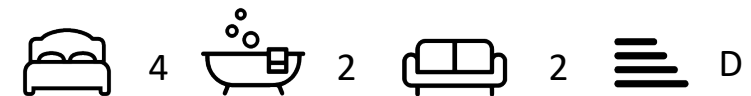
Please note that the location of doors, windows and other items are approximate and this floorplan is to be used for illustrative purposes only. Unauthorized reproduction is prohibited.



Features

- Prime Location: Situated on sought-after Exeforde Avenue, close to local amenities, schools, and transport links.
- Spacious Ground Floor: Features a large lounge, separate dining room, conservatory, and kitchen.
- Generous Outdoor Space: Large rear garden, off-road parking, and a well-maintained front garden.
- Call Aspen Estate Agents to arrange your viewing.
- Four Bedrooms: Includes a family bathroom upstairs for comfortable family living
- Modern Additions: Recently added downstairs shower room and an existing WC for added convenience.
- Detached Garage: Includes a utility area, adding further practicality to the property.

Aspen Residential Services
 77 Church Road, Ashford, Surrey, TW15 2PE
 Tel: 01784 252 202
 Email: enquiries@aspensalesandlettings.com



Tenure - Council Tax Band - G

