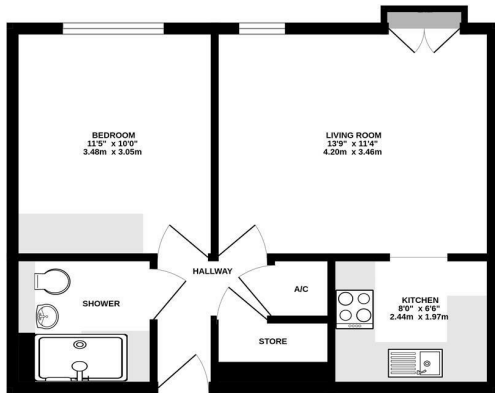




**Keith
Ashton**

Sawyers Hall Lane,
Brentwood

SECOND FLOOR
415 sq.ft. (38.6 sq.m.) approx.



TOTAL FLOOR AREA: 415 sq.ft. (38.6 sq.m.) approx.
Measurements are approximate. See factsheet for further information only.
Based on Herts.gov.uk

£185,000



38 Ravenscourt Sawyers Hall Lane, Brentwood, CM15 9BE

Offered with no onward chain, this well-presented second-floor retirement apartment offers comfortable and convenient living exclusively for the over 60s. The accommodation comprises a spacious living room with a Juliette balcony enjoying attractive views over the green, a modern fitted kitchen, a generous double bedroom with fitted wardrobes, and a contemporary shower room.

Situated within the highly regarded Ravenscourt development, the property is ideally located just a short walk from Brentwood High Street, with its excellent selection of shops, cafés, restaurants, and local amenities. Residents enjoy access to a range of on-site facilities, including lift access to all floors, a laundry room on each level, and welcoming communal areas such as a residents' lounge and conservatory. The development is set within beautifully maintained communal gardens and benefits from secure residents' parking accessed via electronically operated gates.

Combining a desirable location, excellent resident facilities, and low-maintenance living, this apartment represents an ideal opportunity for those seeking a comfortable and sociable retirement lifestyle.



Energy Efficiency Rating			Environmental Impact (CO ₂) Rating		
Very energy efficient - lower running costs	Current	Potential	Very environmentally friendly - lower CO ₂ emissions	Current	Potential
(81-91) A			(81-91) A		
(69-80) B			(69-80) B		
(55-68) C			(55-68) C		
(39-54) D			(39-54) D		
(29-38) E			(29-38) E		
(15-28) F			(15-28) F		
(1-14) G			(1-14) G		
Not energy efficient - higher running costs			Not environmentally friendly - higher CO ₂ emissions		
EU Directive 2002/91/EC	69	72	EU Directive 2002/91/EC		
England & Wales			England & Wales		

SERVICES:

Local Authority: Brentwood
Council tax band: C
Post code: CM15 9BE

VIEWING:

Strictly by prior arrangement with Keith Ashton Estate Agents

OPENING HOURS:

Monday to Friday: 8.45AM - 6.30PM | Saturdays: 9AM - 5.30PM | Sundays: 10AM - 2PM

MORTGAGE INFORMATION:

We offer the additional facility of an in-house Independent Financial Adviser who will access all mortgage lenders with the purpose of providing you with the benefit of choice. For quotations or comparables please call 01277 260858 or visit our interactive website at www.mortgagebusiness.net



We the Agent have not tested any apparatus, fittings or services for this property. The plot size is intended merely as a guide and has not been officially measured or verified by the Agent. Photographs are for illustration only and may depict items which are not for sale or included in the sale of the property. As part of the service we offer we may recommend ancillary services to you which we believe may help you with your property transaction. We wish to make you aware, that should you decide to use these services we will receive a referral fee. For full and detailed information please visit 'terms and conditions' on our website www.keithashton.co.uk

Brentwood
Tel. 01277 260858

Village Office
Tel. 01277 375757

Lettings Office
Tel. 01277 202200

Explore more @ www.keithashton.co.uk

