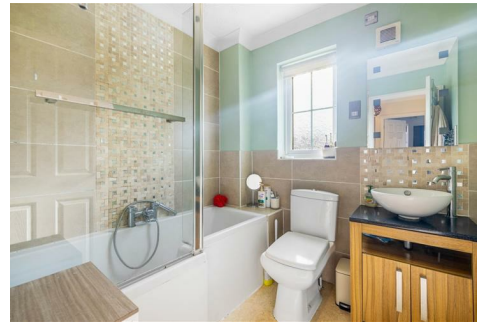


BRUCE MATHER

INDEPENDENT ESTATE AGENT

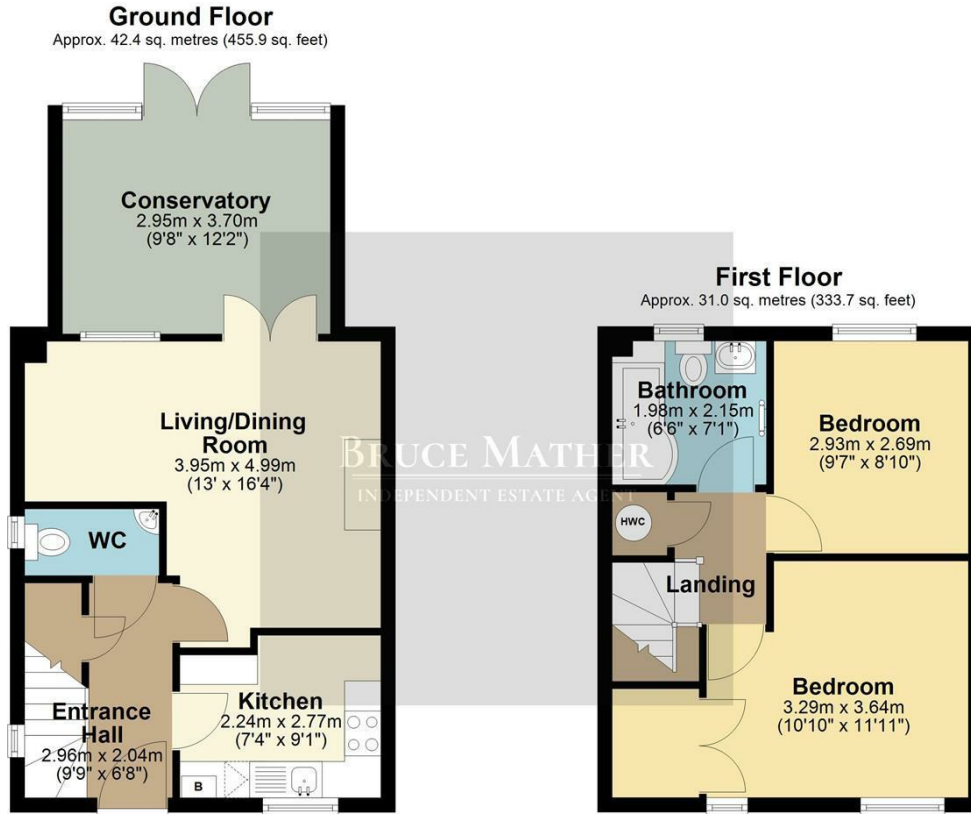


51 Saddlers Way, Boston, PE21 0BB

Asking Price £140,000

A delightful two bedroom end of terrace property situated in a popular residential area at the edge of Boston. Upstairs the accommodation comprises of two bedrooms and a bathroom, downstairs is a kitchen, cloakroom off the entrance hall, a lounge with a dining area leading to the conservatory and garden. To the front is an allocated parking space, to the rear is a contained manageable garden. Located at the edge of Boston, close to town for all your shopping needs, supermarkets, schools and hospital. Please call Bruce Mather Estate Agents on 01205365032 to arrange a viewing on this neat home.

Floor Plan

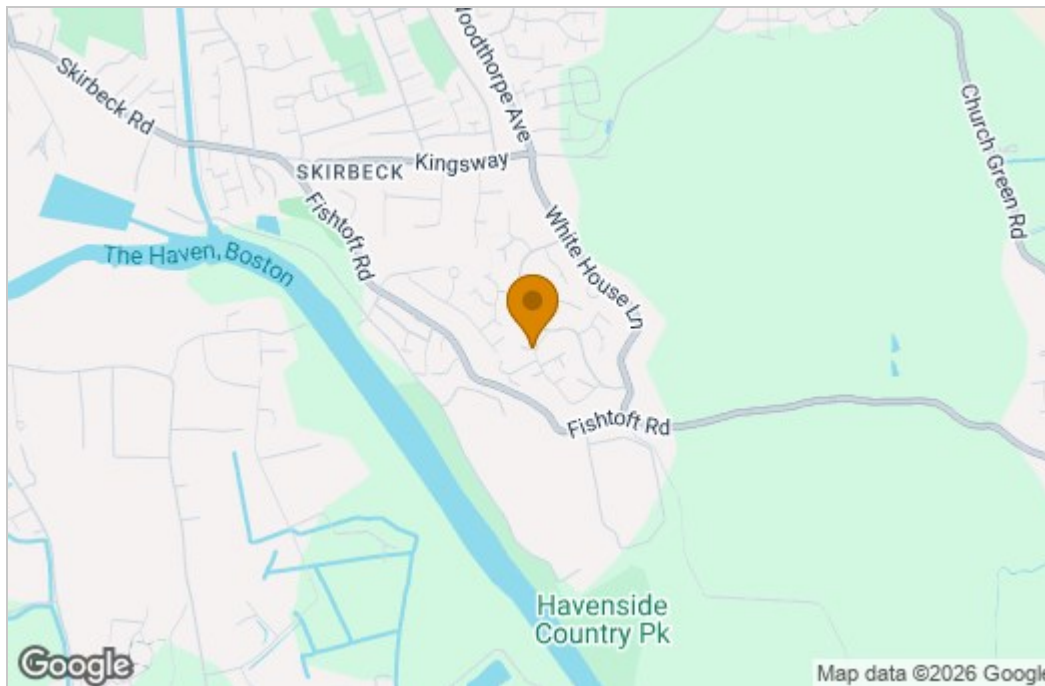


Total area: approx. 73.4 sq. metres (789.6 sq. feet)

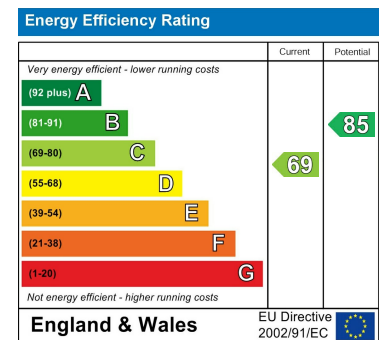
All images used are for illustrative purposes. Images are for guidance only and may not necessarily represent a true and accurate depiction of the condition of property. Floor plans are intended to give an indication of the layout only. All images, floor plans and dimensions are not intended to form part of any contract.
Plan produced using PlanUp.



Area Map



Energy Efficiency Graph



These particulars, whilst believed to be accurate are set out as a general outline only for guidance and do not constitute any part of an offer or contract. Intending purchasers should not rely on them as statements of representation of fact, but must satisfy themselves by inspection or otherwise as to their accuracy. No person in this firm's employment has the authority to make or give any representation or warranty in respect of the property.