



**Forest End, Waterlooville PO7 7AB**

**welcome to**

## **Forest End, Waterloooville**

Extended three bed semi in quiet cul-de-sac. Features lounge with log burner, modern kitchen with island, utility, shower room, private low-maintenance garden. Close to amenities, schools & transport. No onward chain.

### **Lounge**

Via front door. Double glazed window to front aspect. Wood laminate flooring, two radiators, fireplace with hearth. Through to kitchen/diner.

### **Kitchen / Diner**

Range of wall and base units with wood work surface over. Kitchen island/breakfast bar with sink unit with cupboards and dishwasher under. Wood laminate flooring, space for American style fridge/freezer, built-in low level oven with gas hob and extractor hood over. Spotlights, door to rear hallway and sliding patio doors and double glazing to conservatory.

### **Conservatory**

Door to rear garden. Wood laminate flooring, radiator, space for table and chairs.

### **Rear Hallway**

Storage cupboard. Door to shower room and door to rear garden.

### **Shower Room**

Double glazed window to front aspect. Shower with glass door, low level WC, wash hand basin set over vanity unit. Heated towel rail, tiled floor, spotlights.

### **First Floor Landing**

Doors to:

### **Bedroom One**

Double glazed window to front aspect. Carpet flooring, radiator. Built-in wardrobe with mirror door.

### **Bedroom Two**

Double glazed window to rear aspect. Carpet flooring, radiator.

### **Bedroom Three**

Double glazed window to front aspect. Wood laminate flooring, radiator.

### **Bathroom**

Double glazed window to rear aspect. Bath with rain shower over, wash hand basin set over vanity unit and low level WC with enclosed cistern. Tiled floor, heated towel rail.

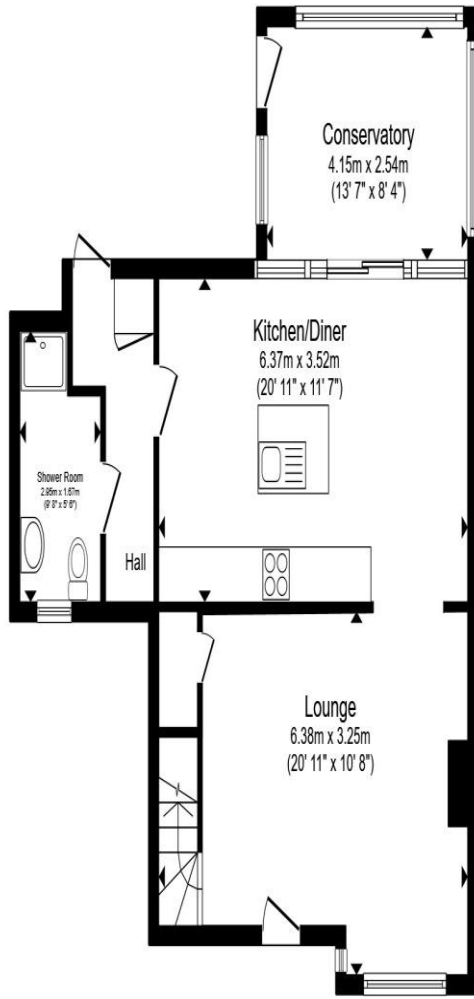
### **Outside**

#### **Front**

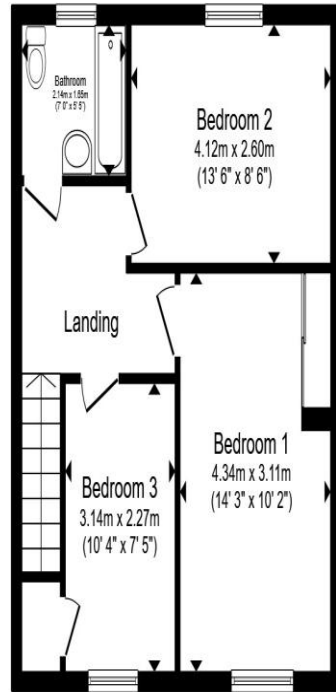
Block paved driveway providing off road parking.

#### **Rear Garden**

Laid to patio and decking with wooden shed and space for hot tub. Door to outside storage.



**Ground Floor**



**First Floor**

Total floor area 112.0 m<sup>2</sup> (1,206 sq.ft.) approx

This floor plan is for illustrative purposes only. It is not drawn to scale. Any measurements, floor areas (including any total floor area), openings and orientation are approximate. No details are guaranteed, they cannot be relied upon for any purpose and they do not form part of any agreement. No liability is taken for any error, omission or misstatement. A party must rely upon its own inspection(s). Powered by [www.propertybox.io](http://www.propertybox.io)



**welcome to**  
**Forest End,**  
**Waterlooville**

- Three Bedroom Semi Detached
- Extended Home with No Onward Chain
- Quiet Cul-de-Sac
- Log Burner
- Kitchen Island

Tenure: Freehold EPC Rating: C  
Council Tax Band: C

**£360,000**



**view this property online** [fox-and-sons.co.uk/Property/WLV109742](https://fox-and-sons.co.uk/Property/WLV109742)



Property Ref:  
WLV109742 - 0002

1. MONEY LAUNDERING REGULATIONS Intending purchasers will be asked to produce identification documentation at a later stage and we would ask for your co-operation in order that there is no delay in agreeing the sale. 2. These particulars do not constitute part or all of an offer or contract. 3. The measurements indicated are supplied for guidance only and as such must be considered incorrect. Potential buyers are advised to recheck measurements before committing to any expense. 4. We have not tested any apparatus, equipment, fixtures or services and it is in the buyers interest to check the working condition of any appliances. 5. Where an EPC, or a Home Report (Scotland only) is held for this property, it is available for inspection at the branch by appointment. If you require a printed version of a Home Report, you will need to pay a reasonable production charge reflecting printing and other costs. 6. We are not able to offer an opinion either written or verbal on the content of these reports and this must be obtained from your legal representative. 7. Whilst we take care in preparing these reports, a buyer should ensure that his/her legal representative confirms as soon as possible all matters relating to title including the extent and boundaries of the property and other important matters before exchange of contracts.

Fox & Sons is a trading name of Sequence (UK) Limited which is registered in England and Wales under company number 4268443, Registered Office is Cumbria House, 16-20 Hockliffe Street, Leighton Buzzard, Bedfordshire, LU7 1GN. VAT Registration Number is 500 2481 05.



**023 9226 2447**



[Waterlooville@fox-and-sons.co.uk](mailto:Waterlooville@fox-and-sons.co.uk)



81B London Road, WATERLOOVILLE,  
Hampshire, PO7 7ES



**[fox-and-sons.co.uk](https://fox-and-sons.co.uk)**