

Frank Harris & Co.



Witley Court, WC1N

£550,000

This is a fantastic two bedroom flat located on the sixth floor of this 1930s portered mansion block. The property benefits from heating and hot water included in the service charge.

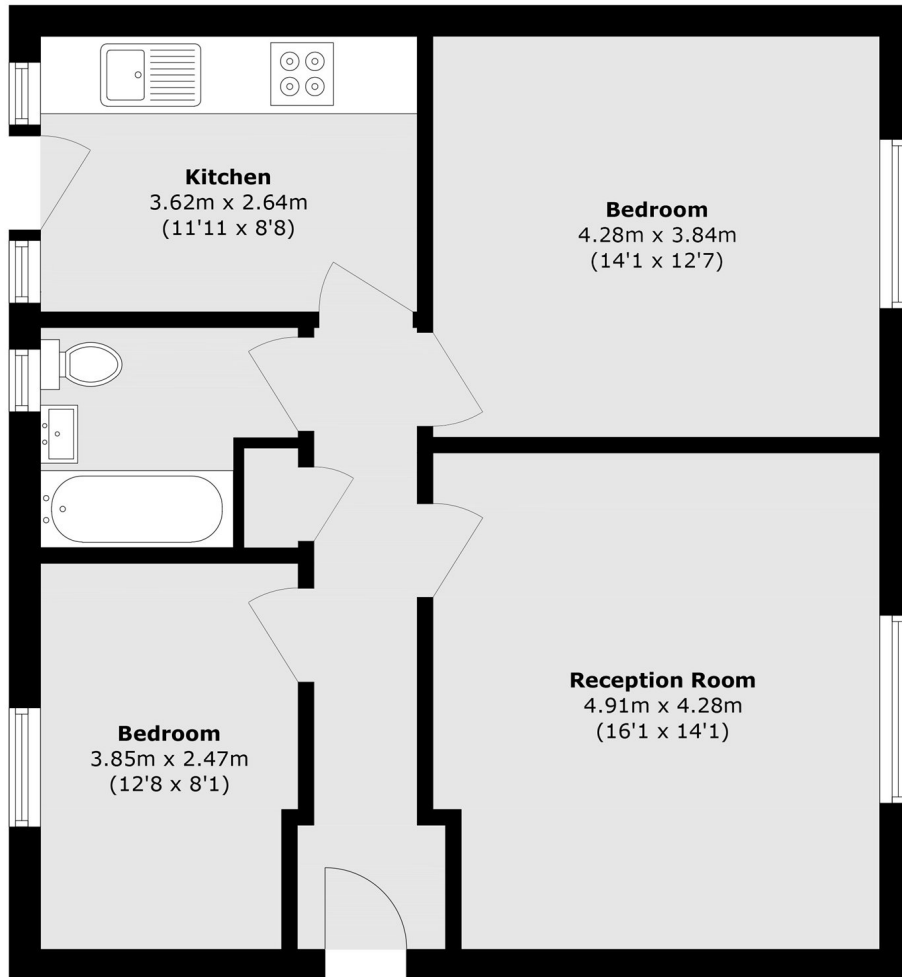


Located on Coram Street in Bloomsbury this two bedroom home provides excellent access to the underground at Russell Square, The Brunswick shopping centre and numerous universities including UCL, LSE and King's.

- Two Double Bedrooms • Separate Living Room • Lift Access •
- Porter Service • 44 Year Lease • No Onward Chain •



Frank Harris & Co.



Total area (approx.): 70.3 sq. m (756.7 sq. ft)

Frank Harris & Co. Bloomsbury and Kings Cross
81 Marchmont Street,
London, WC1N 1AL
020 7405 4444
bloomsburysales@frankharris.co.uk

Energy Rating: C. We aim to make our particulars both accurate and reliable. However they are not guaranteed; nor do they form part of an offer or contract. If you require clarification on any points then please contact us, especially if you're traveling some distance to view. Please note that appliances and heating systems have not been tested and therefore no warranties can be given as to their good working order.

