

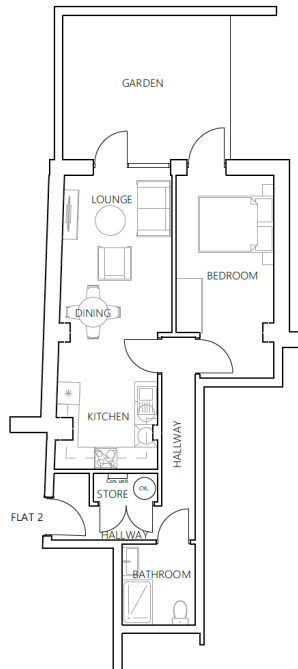
Cynthia Ikeda Apartments, London, SE26 5HF

Guide Price £375,000

🛏️ 1 🚿 1 🚗 1



- Please Quote HM1127 For All Enquiries
- Guide Price £375,000–£425,000 | Chain Free
- Open Day Friday 12 June – By Appointment Only
- Off-Street Parking Two Minutes Away
- High-Specification Finish
- Triple-Glazed Windows
- Step-Free Access & Lift
- EPC B Anticipated
- Close To Sydenham Station & Excellent Transport Links
- Images For Illustration Only



Flat 2 Layout Plan
Scale 1:100

SHOW HOME NOW AVAILABLE TO VIEW!
Contemporary Boutique Living In A Landmark New Development
Private Viewings Friday 12 June – Appointment Only
Exclusive Listing | Ref: HM1127

Guide Price £375,000–£425,000 | Chain Free

Introducing Cynthia Ikeda Apartments – an exceptional collection of beautifully crafted homes combining modern elegance, comfort, and connectivity in the heart of South East London.