



OLDBURY PLACE, W1U

£2,950,000

Three bedrooms
Three bathrooms
Three reception rooms
Two patio garden areas
Prime location
Marylebone high street

@marshandparsons
marshandparsons.co.uk

MARSH &
PARSONS



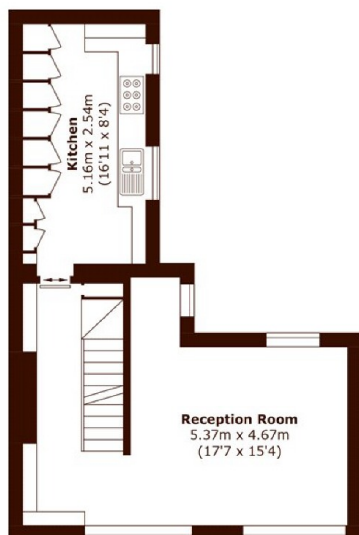
ABOUT THE PROPERTY

The accommodation comprises three bedrooms and three bathrooms as well as a dining room, ground floor reception room and a delightful first floor reception room. Marylebone houses of this calibre and in this position are rarely available. The closest Underground Station is Baker Street with its fantastic transport connections and Oxford Street is a mere 10 minute walk away.

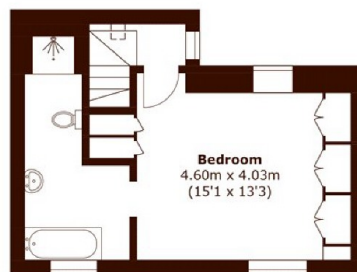
This Freehold Mews House is situated on this tranquil classic Marylebone Mews located in this prestigious position in the heart of Marylebone Village.



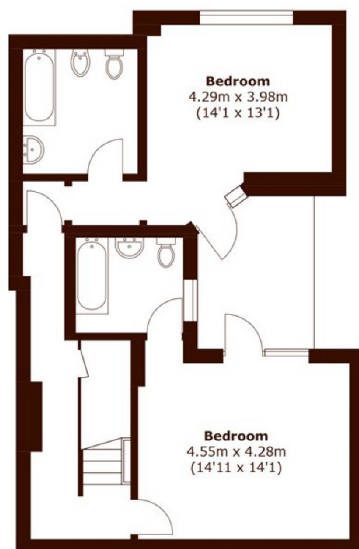
STEP INSIDE OLDBURY PLACE



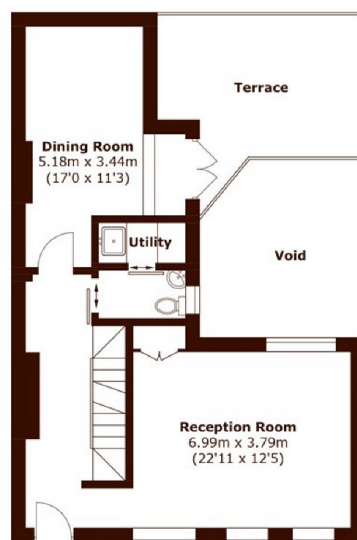
First Floor



Second Floor



Lower Ground Floor



Ground Floor

Total area (approx.): 189.7 sq. m (2,041.9 sq. ft)
(Excluding Void)
Terrace: 13.4 sq. m (144.2 sq. ft)

Marylebone & Mayfair
020 7935 1775

Energy Rating: D We aim to make our particulars both accurate and reliable. However, they are not guaranteed; nor do they form part of an offer or contract. If you require clarification on any points then please contact us, especially if you're traveling some distance to view. Please note that appliances and heating systems have not been tested and therefore no warranties can be given as to their good working order

**MARSH &
PARSONS**