



Hanworth Road, TW4

£599,950

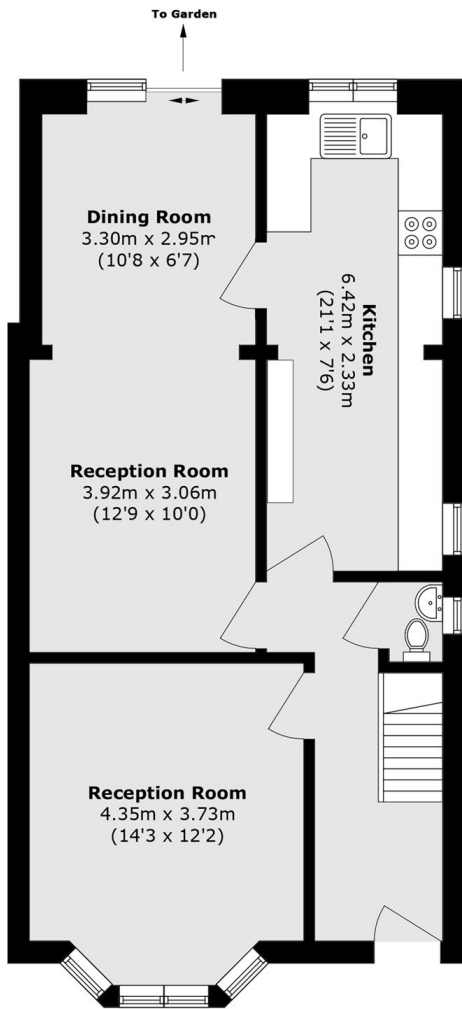
Offered to the market with no onward chain is this substantial semi-detached three bedroom house positioned on a popular and sought after residential road. Offering more than 1,170 square feet of generous living space (in addition to a large garage), there is further scope to extend (STPP). The ground floor comprises of a welcoming front reception room, in addition to a double reception/dining room and separate kitchen to the rear. There is an additional guest WC on the ground floor. We love the generous south-east facing garden offering side access from the front. On the first floor there are three bedrooms and a family bathroom with separate WC

Situated on a popular and sought after residential location, Hanworth Road is close to excellent local schools, parks and transport links. Neighbouring areas of Whitton, Twickenham and Isleworth are all within easy reach.

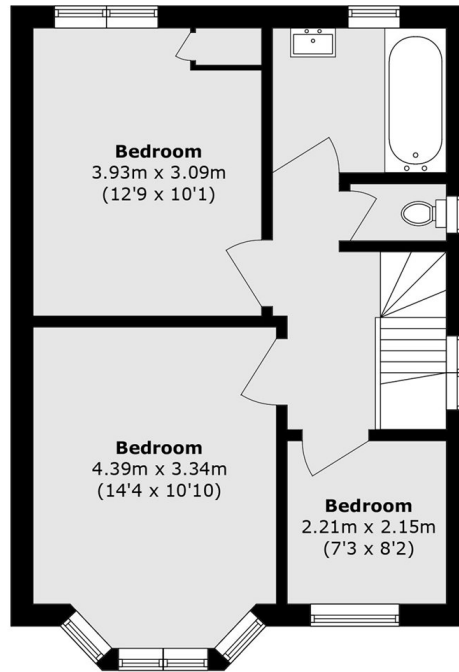
Features

- Semi-Detached House Three Bedrooms
- One Bathroom & Guest WC
- Driveway For Multiple Cars
- No Chain
- Side Access & Garage

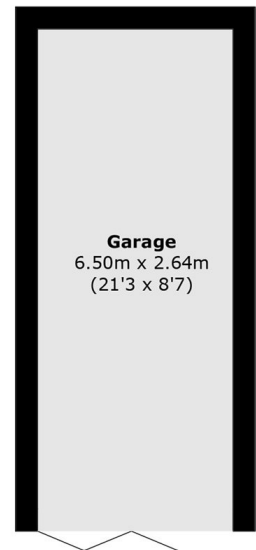
Hanworth Road, Hounslow, TW4



Ground Floor



First Floor



Garage

Total area (approx.): 108.9 sq. m (1172.2 sq. ft)

(Excluding Garage)

Garage area (approx.): 17.2 sq. m (185.1 sq. ft)