



2 Sydney Court, 1 Robertson Way, Basingstoke – RG21 6BH

£240,000 Leasehold

Ensuite to main bedroom • Long lease – 146 years remaining • Service charge: £220 per month • Open-plan kitchen / lounge / diner • Ground floor apartment • Ground rent: £300 per annum • Two allocated parking spaces, plus visitor parking permit

01256 321777

www.thepropertyexplorer.co.uk

the property
explorer

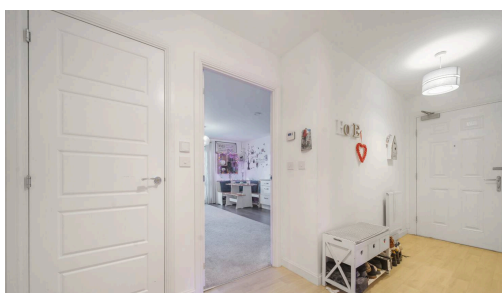
EXPLORER is delighted to present this spacious and stylish ground-floor luxury apartment, featuring two generous double bedrooms and two contemporary bathrooms.

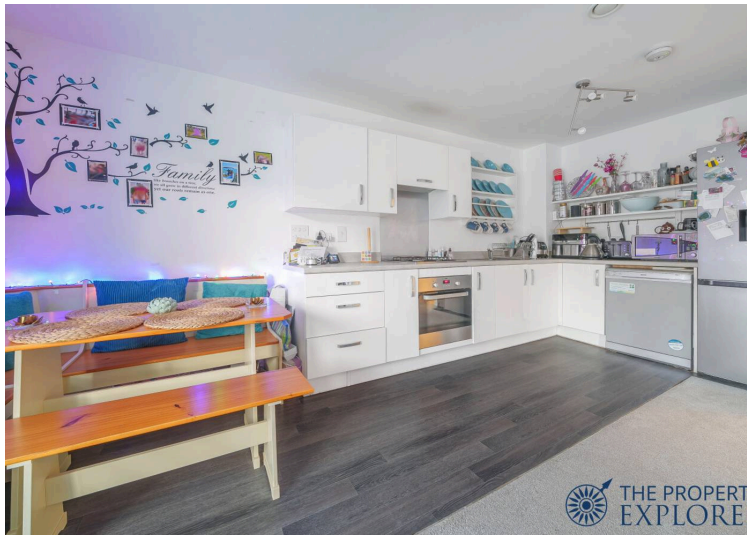
Council Tax band: C

Tenure: Leasehold



- Ensuite to main bedroom
- Long lease – 146 years remaining
- Service charge: £220 per month
- Open-plan kitchen / lounge / diner
- Ground floor apartment
- Ground rent: £300 per annum
- Two allocated parking spaces, plus visitor parking permit





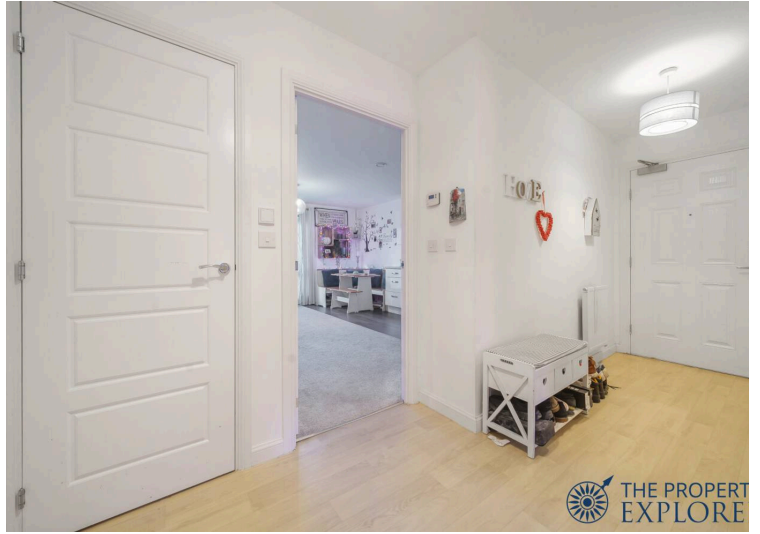
THE PROPERTY EXPLORE



THE PROPERTY EXPLORE



THE PROPERTY EXPLORE



THE PROPERTY EXPLORE

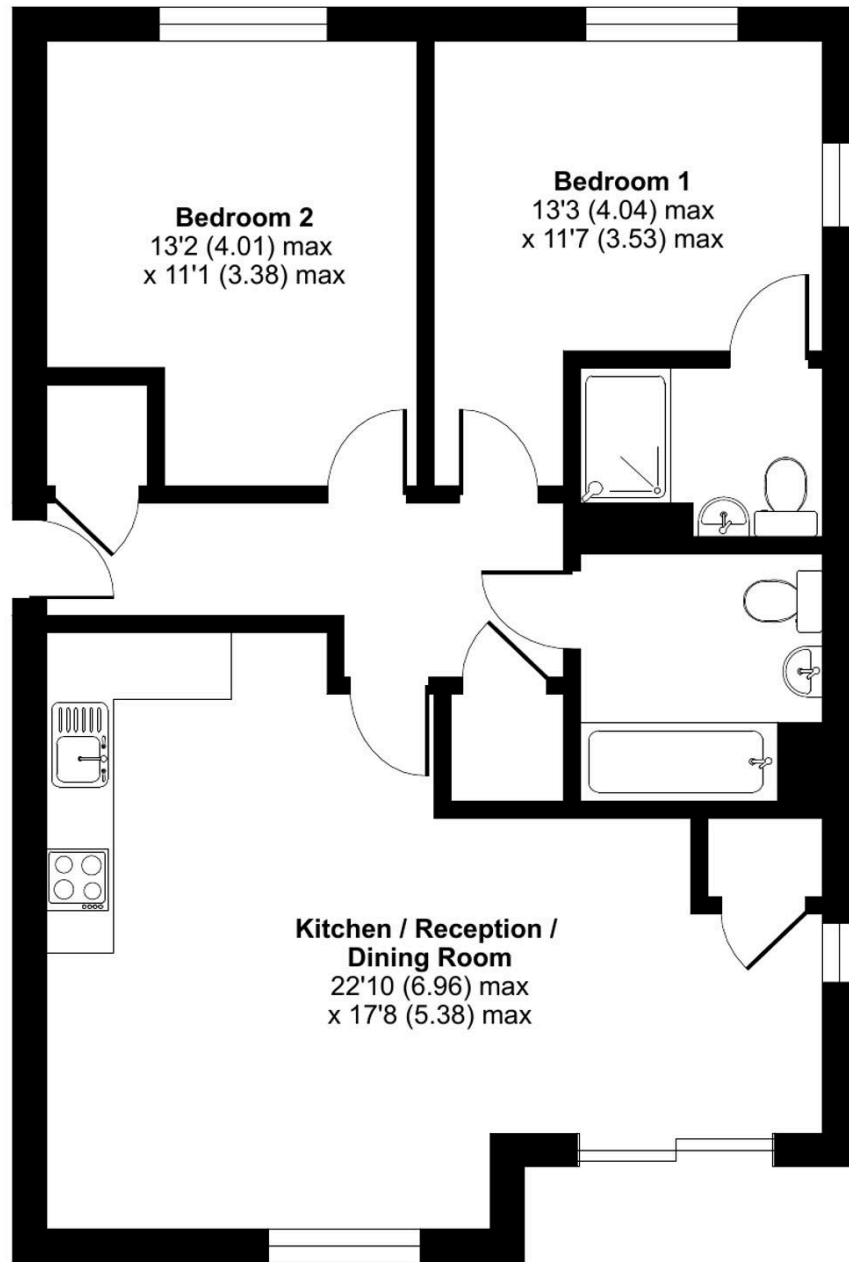


THE PROPERTY EXPLORE

Sydney Court, Robertson Way, Basingstoke, RG21

Approximate Area = 781 sq ft / 72.5 sq m

For identification only - Not to scale



FIRST FLOOR



Floor plan produced in accordance with RICS Property Measurement 2nd Edition, Incorporating International Property Measurement Standards (IPMS2 Residential). © nchecon 2025. Produced for Property Explorer. REF: 1230986

You can include any text here. The text can be modified upon generating your brochure.