



Guide Price
£275,000

Freehold

4x  2x  2x 

**Second Avenue,
Chatham, Kent, ME4**

OVER 60?

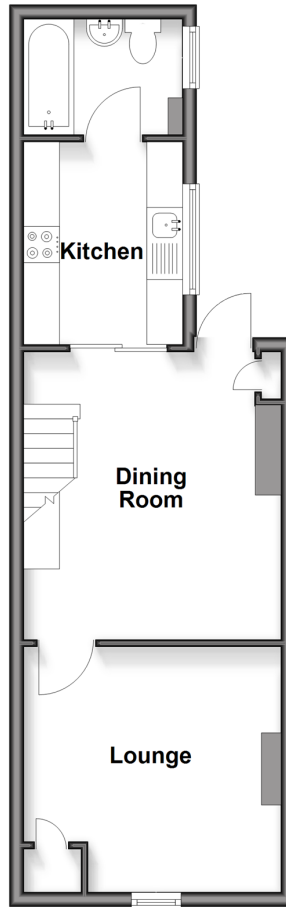
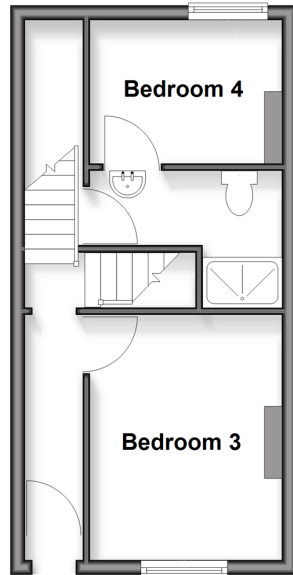
Secure this property
for up to **59% less!**

Wards
Helping you move forwards

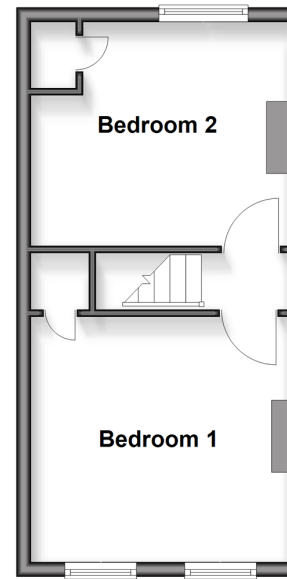
Split Level Lower Ground Floor

Approx. 37.2 sq. metres (400.2 sq. feet)

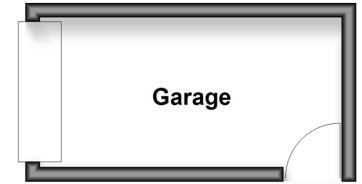
Ground Floor
Approx. 26.9 sq. metres (290.0 sq. feet)



First Floor
Approx. 26.9 sq. metres (290.0 sq. feet)



Outbuilding
Approx. 0.0 sq. metres (0.0 sq. feet)
(excluding Garage)



Accommodation

GROUND FLOOR

Entrance Hallway

Bedroom 3: 11'2 x 9'4 (3.41m x 2.85m)

Bedroom 4: 9'9 x 7'4 (2.97m x 2.24m)

Shower Room

SPLIT LEVEL LOWER GROUND FLOOR

Lounge: 12'3 x 10'11 (3.74m x 3.33m)

Dining Room: 12'9 x 11'11 (3.89m x 3.63m)

Kitchen: 8'11 x 7'4 (2.72m x 2.24m)

Bathroom

FIRST FLOOR

Landing

Bedroom 1: 12'9 x 11'1 (3.89m x 3.38m)

Bedroom 2: 12'7 x 11'1 (3.84m x 3.38m)

OUTSIDE

Rear Garden

Garage



Main features

- Victorian end of terrace house, versatile layout set over 3 floors
- Amazing living space on lower ground floor
- 2 bathrooms and parking with garage accessed from side/rear
- Excellent family home for first time buyers or those upsizing
- Great location for local schools and access and town



Nearest Schools

Primary Schools: Luton Primary School 0.1 miles, New Road Primary School 1.1 miles Wayfield Primary School 1.1 miles
Secondary Schools: Victory Academy 0.9 miles, Holcombe Grammar School 1.3 miles



Transport Information

Train Stations: Chatham 1.4 miles, Gillingham 1.6 miles



Address

Second Avenue, Chatham, Kent, ME4



Directions

For directions to this property please contact us.



Wards
Helping you move forwards

Call Chatham Branch 01634 841243 ■ wardsofkent.co.uk



■ Through a Homewise Home For Life Plan people aged 60+ can secure this property for up to 59% less, by purchasing a Lifetime Lease

EPC RATING	CURRENT:	POTENTIAL:
 		

90115QLW/20260415/BC/BC