

Leathwell Road, SE8

£1,650 Per calendar month

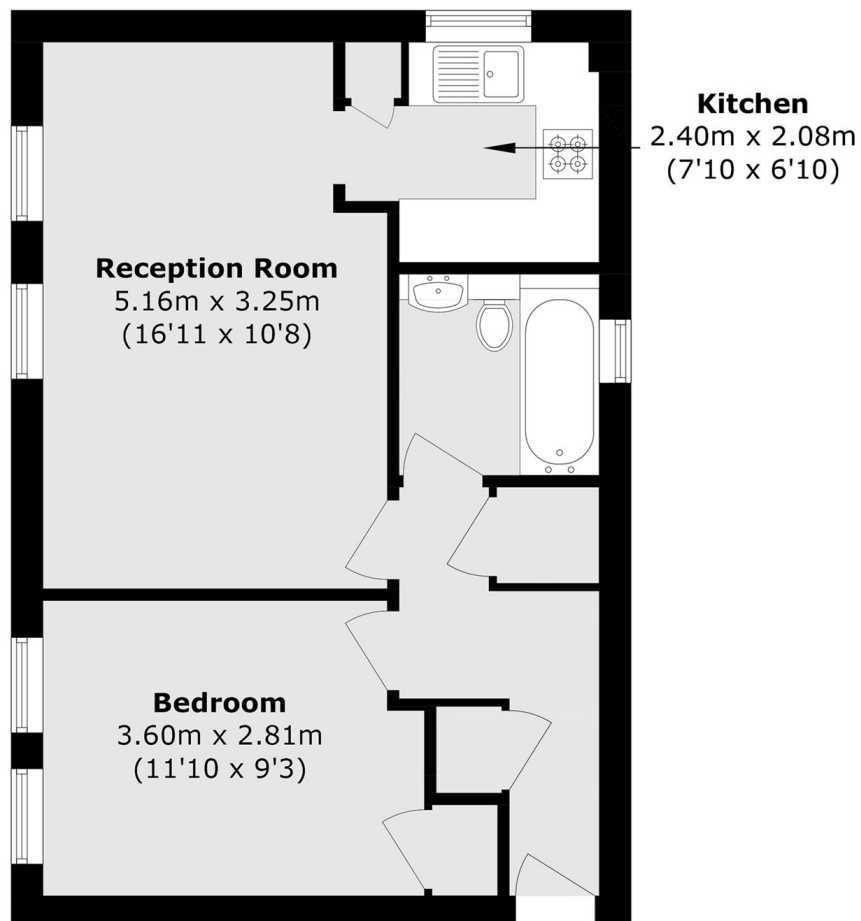
Located in a well-maintained, private development is this first floor flat comprising a spacious reception, separate kitchen, modern bathroom and a double bedroom. The property also benefits from a secure, off-street parking space.

The flat is ideally placed for Elverson Rd DLR meaning access into Canary Wharf couldn't be easier. Lewisham station is also nearby for mainline services into central London (Victoria, Cannon Street and London Bridge)

Features

- First Floor Flat
- One Double Bedroom
- Separate Kitchen
- Secure Development
- Well Presented
- Off-Street Parking

Leathwell Road,
London, SE8



Total Area (approx.): 42.3 sq. m (455.3 sq. ft)