

Property ref: 146890

## Carroway Street, Reading, RG1 3FZ

£1,795 PCM

**HASLAM'S**  
Lettings



A stunning two bedroom sixth floor furnished apartment located in Reading town centre, built by Berkeley Homes.  
Reading Borough Council Tax Band D.  
Heating Type (Gas, Elec, communal boiler etc.): Communal  
Water supply: Mains  
Drainage info: Mains  
Electricity supply: Mains  
Broadband/Mobile Info: Connections available. For an indication of specific speeds and supply of Broadband and Mobile, we advise applicants go to the Ofcom website Broadband and Mobile Coverage Checker.

**Available 16/04/2026**

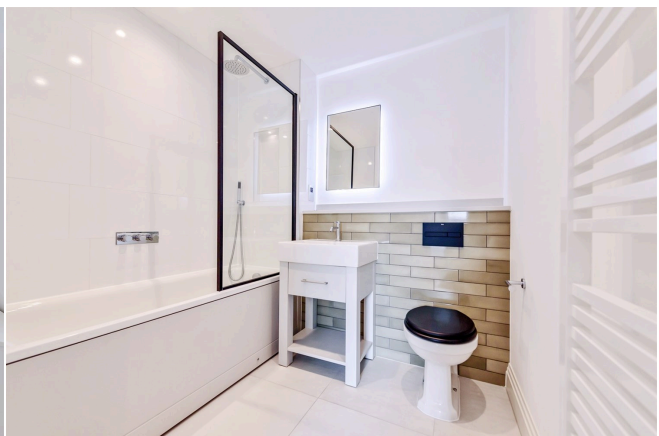
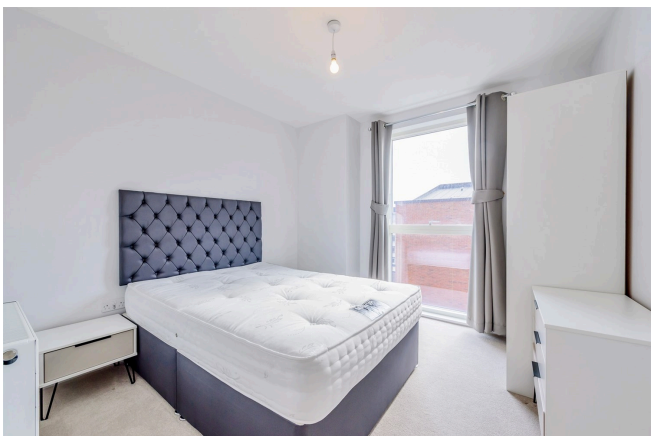
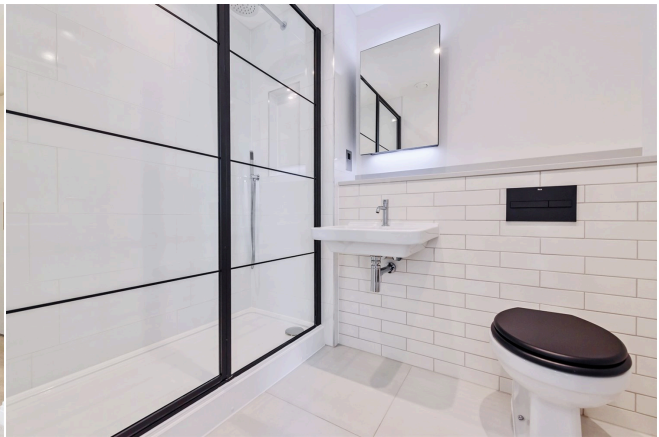
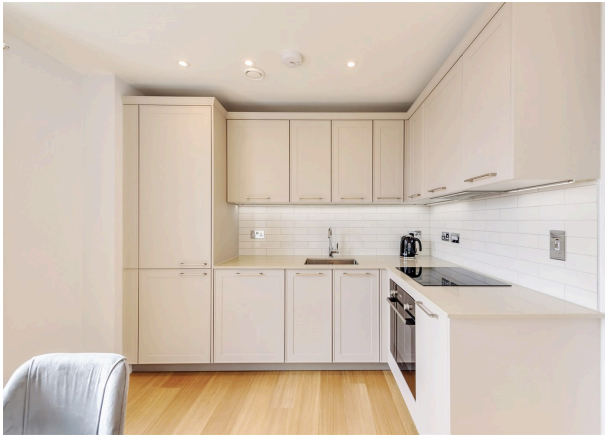
\*Fees For Assured Shorthold Tenancies: when you rent a property from us you will be required to pay a sum equivalent to one weeks' rent for a holding deposit. Upon successful application, this amount will be off set against your first months' rent. You will also be required to pay a security deposit equivalent to 5 weeks' rent which will be held and protected in line with Deposit legislation. For more information about our fees please visit: [www.haslams.net](http://www.haslams.net)  
Fees for all other tenancies (Non Housing Act Tenancies / Company Lets): when you rent a property from us we will charge you a one-off fee per property. This charge is the equivalent of 15 days of the monthly rental charge (+VAT) with a minimum fee of £450 (inc.VAT) up to a maximum of £650 (inc.VAT). Other fees may apply depending on your circumstances.

- Two double bedrooms
- Fully fitted kitchen with appliances
- £75 per month sundry on top of the rent to cover hot water and heating via communal boiler
- EPC rating B; Private balcony
- No parking; Furnished
- Managed by HASLAM'S

**0118 960 1055**

**[lettings@haslams.net](mailto:lettings@haslams.net) [www.haslams.net](http://www.haslams.net)**

**Haslams Estate Agents Ltd, 159 Friar Street, Reading, Berkshire, RG1 1HE**

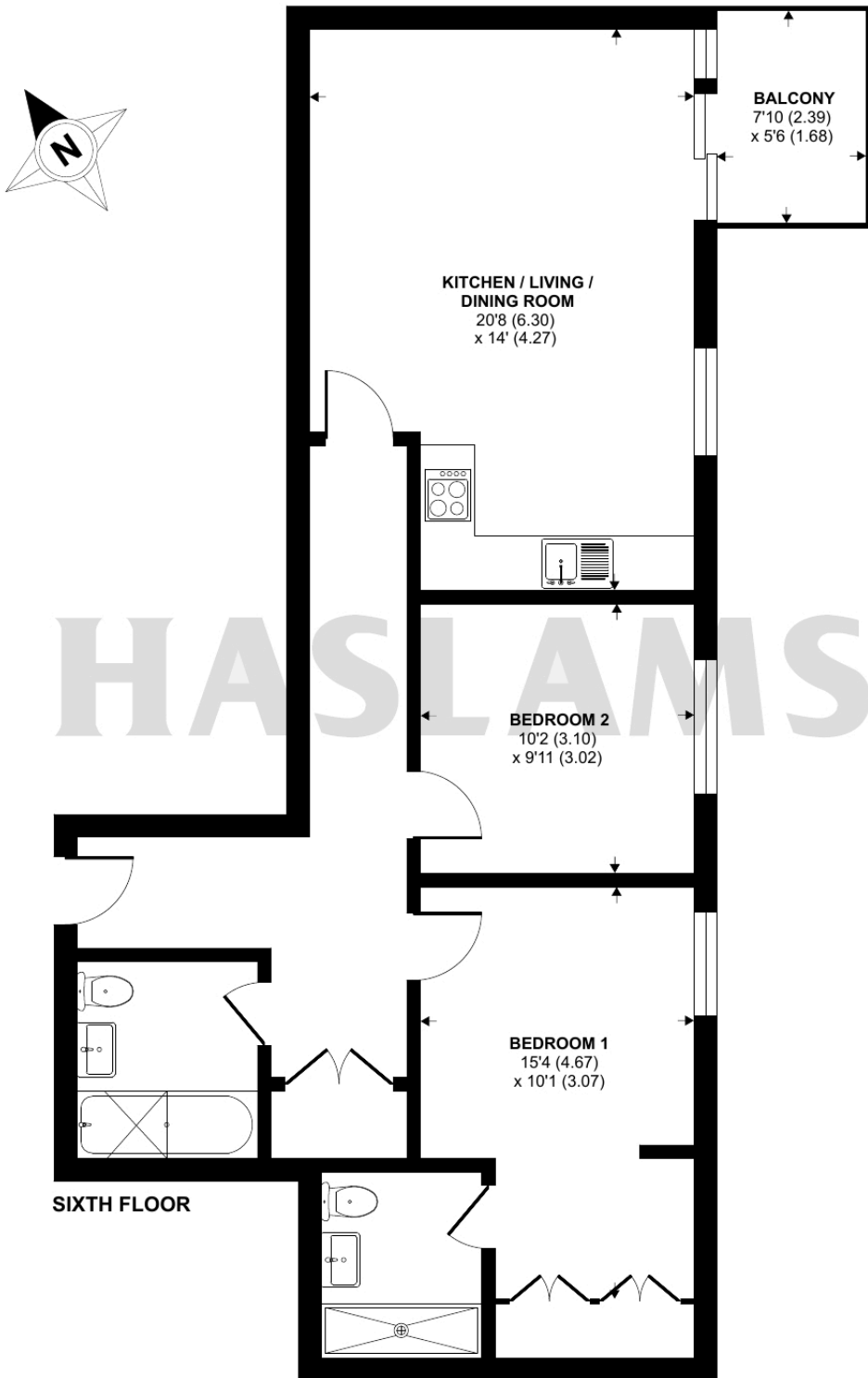




# Carraway Street, Reading, RG1

Approximate Area = 792 sq ft / 74 sq m

For identification only - Not to scale



SIXTH FLOOR



Certified Property Measurer

Floor plan produced in accordance with RICS Property Measurement Standards incorporating International Property Measurement Standards (IPMS2 Residential). © n1checom 2022. Produced for Haslams. REF: 894246