

## Wyfold Road, SW6

£450,000

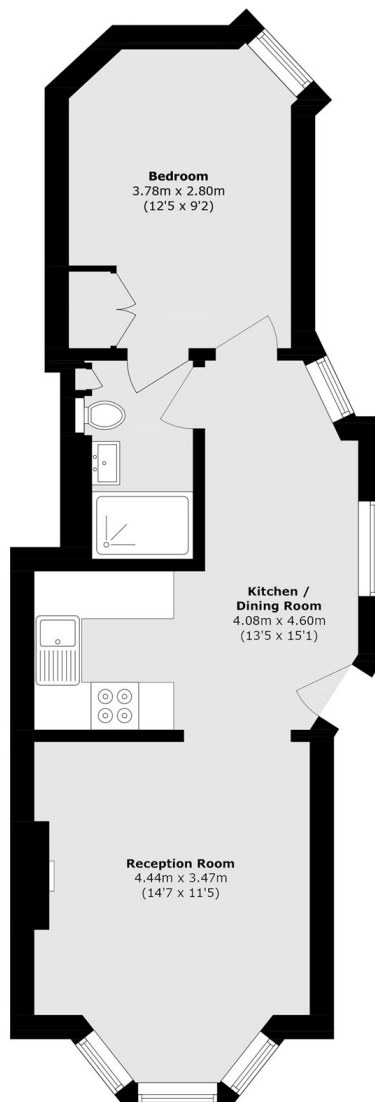
This spacious ground-floor property is well proportioned throughout and features a large double bedroom, a generous reception room, and a separate kitchen and dining area. The property further benefits from direct access to a communal outdoor space.

Wyfold Road is located in the heart of Munster Village, moments from the shops, cafes and restaurants of Munster Road. Parsons Green and Fulham Broadway stations are nearby.

### Features

- One Double Bedroom
- One Bathroom
- Ground Floor
- Separate Kitchen
- High Ceilings
- Munster Village

# Wyfold Road, London, SW6



Total area (approx.): 41.1 sq. m (442.4 sq. ft)