



Brookland Rise Hampstead Garden Suburb NW11

Freehold

£1,295,000



800 Finchley Road, Hampstead Garden Suburb, London, NW11 7TJ

020 8458 5000

[sales@litchfields.com](mailto:sales@litchfields.com)

[www.litchfields.com](http://www.litchfields.com)

Offices also in Highgate



An outstanding, extended semi-detached house offering excellent accommodation. Placed on this popular road, moments from Brooklands school. The house has recently been refitted by the present owners and offers excellent bright and sunny areas all in superb condition. Formally a four bedroom house on one level and now used as three bedrooms plus a dressing room. This glorious home features a sunny west facing rear garden and has a large detached garage. Viewing is highly recommended. EPC- D





- Four bedrooms
- Dressing Room/Bed 4
- Luxury Bathroom
- Large fitted Kitchen/Breakfast room
- Lounge/Dining Room
- Cloakroom
- Large detached garage
- Sunny rear garden
- EPC- D



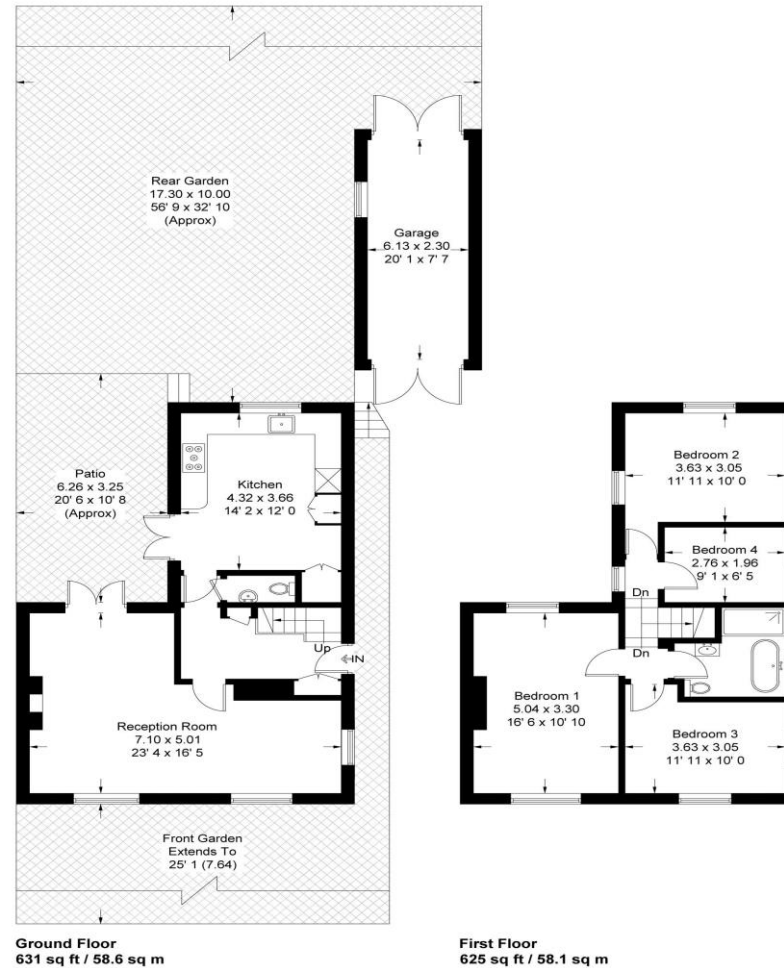


## Brookland Rise

Approximate Gross Internal Area = 1256 sq ft / 116.7 sq m

Garage = 164 sq ft / 15.2 sq m

Total = 1420 sq ft / 131.9 sq m



Not to scale, for guidance only and must not be relied upon as a statement of fact  
All measurements and areas are approximate only and have been prepared in  
accordance with the current edition of the RICS Code of Measuring Practice

800 Finchley Road, Hampstead Garden Suburb, London, NW11 7TJ

020 8458 5000

sales@litchfields.com

www.litchfields.com

Offices also in Highgate