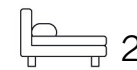




Living
made
better

Friars Mead
Isle Of Dogs, E14 3JZ



2



2



1



C

Asking Price £750,000

Friars Mead, Isle Of Dogs, E14 3JZ

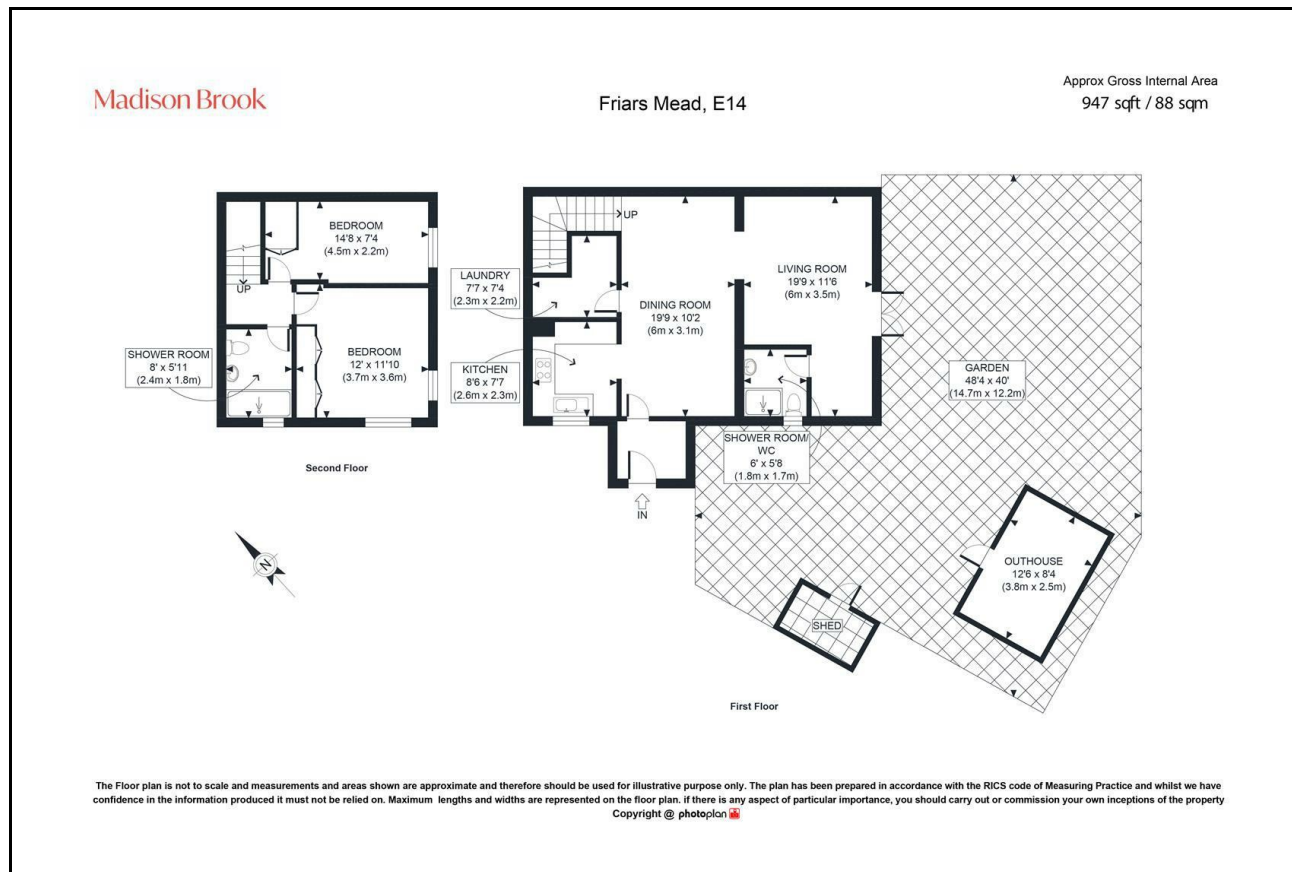
Madison Brook

Property Summary

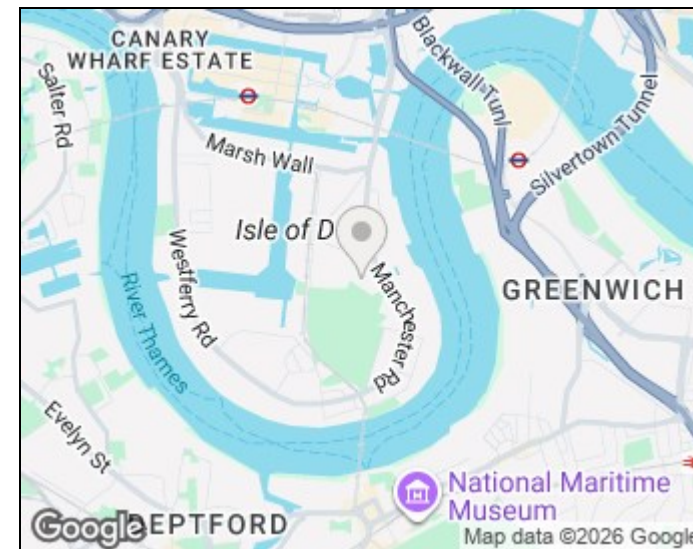
This beautifully refurbished freehold house has been finished to an exceptional standard throughout, offering modern, high-spec living with smart-home technology. The property features generous living and dining space, a bespoke fitted kitchen with integrated appliances, and luxury bathroom facilities.

Externally, the home benefits from a large private rear garden with a waterfall feature, as well as a separate shed and outhouse. Offered chain free and ideally located close to Canary Wharf and Crossharbour DLR, this is a turnkey home in a highly convenient location.

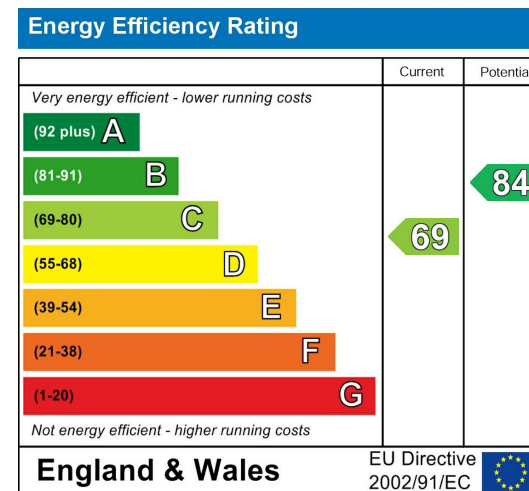
Floorplan



Area Map



Energy Efficiency Graph



These particulars, whilst believed to be accurate are set out as a general outline only for guidance and do not constitute any part of an offer or contract. Intending purchasers should not rely on them as statements of representation of fact, but must satisfy themselves by inspection or otherwise as to their accuracy. No person in this firm's employment has the authority to make or give any representation or warranty in respect of the property.

Unit B 20 Western Gateway, Royal Victoria
 Dock, London, E16 1BS
 Tel: 020 3946 6000 Email:
 docklands@madisonbrook.com
<https://madisonbrook.com/>