


ROBERTSON PHILLIPS
Estate Agents, Valuers,
Lettings and Property Management

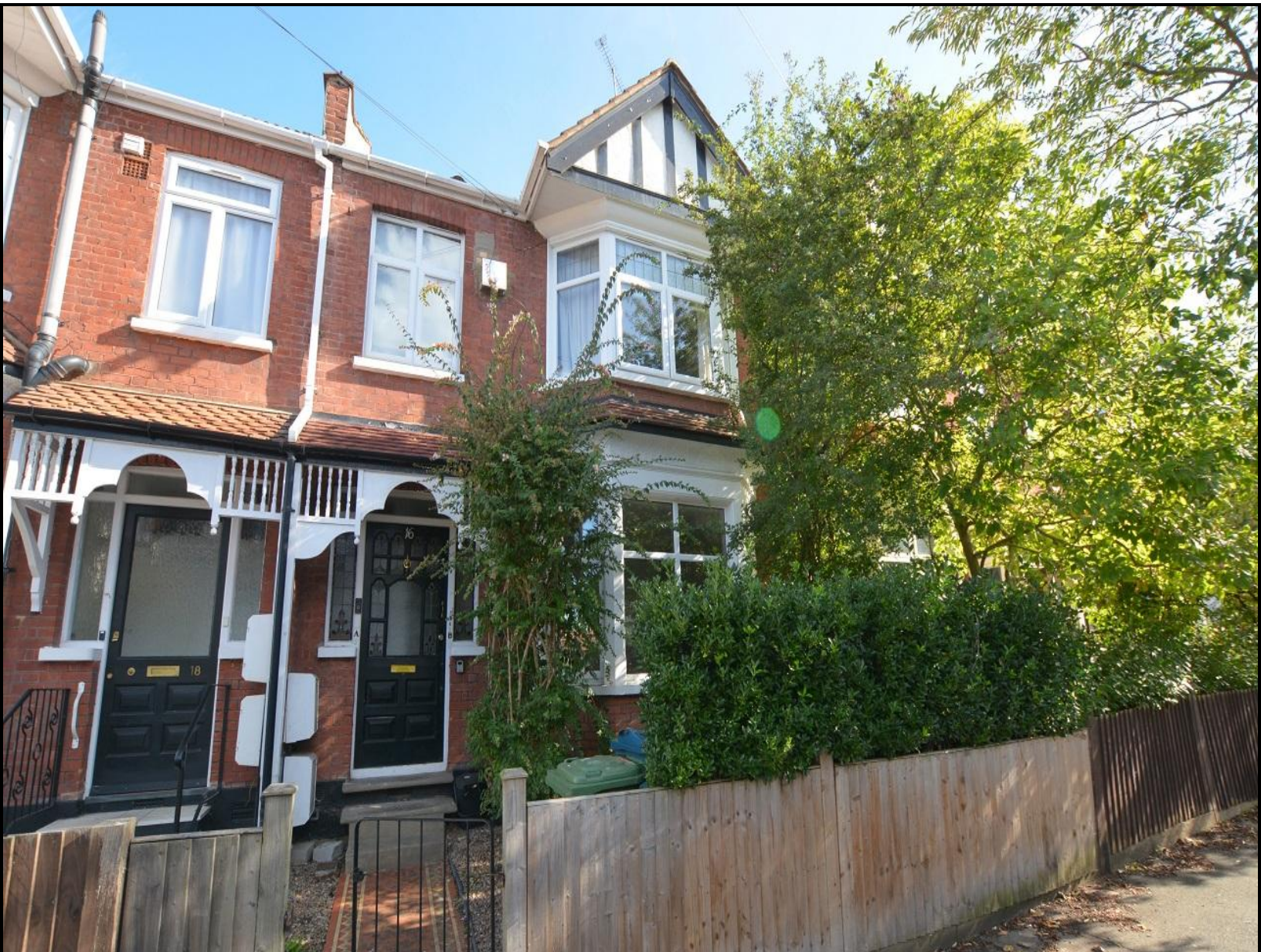
40 Station Road, North Harrow,
Middlesex, HA2 7SE
Tel: 0208 863 1122

Email: harrow@robertsonphillips.co.uk

Harrow Lettings: 0208 092 4045
Hatch End/Pinner Sales: 0208 428 7161


**ROBERTSON
PHILLIPS**
Est. 1991

OXFORD ROAD, HARROW



One Bedroom Ground Floor Maisonette

GUIDE PRICE £355,000



www.robertsonphillips.co.uk



Description

This stunning ground floor maisonette offers a rare opportunity to acquire a beautiful and well-presented property in a highly sought-after location. With one generously sized bedroom, this charming maisonette is perfect for singles, couples, or those looking for a peaceful retreat. As you enter the property, you are greeted by a spacious and bright living room, providing the perfect space to relax and unwind after a long day. The separate kitchen is equipped with high-quality fittings and fixtures, creating a modern and functional space ideal for cooking and entertaining. The property also features a well-proportioned bedroom, finished to a high standard, providing a peaceful retreat from the hustle and bustle of daily life. The stylish bathroom is also finished to an excellent standard, offering a luxurious and relaxing experience. One of the standout features of this property is the private garden, measuring approximately 60ft in length, providing a serene and tranquil outdoor space perfect for entertaining guests, dining al fresco, or simply relaxing in the sunshine. Please note :- Photographs taken prior to the current tenancy.



Location: Oxford Road is situated off Pinner Road





- *One Double Bedroom*
- *Gas Central Heating*
- *Vinyl Flooring Throughout*
- *Rear Garden*
- *Ground Floor*
- *Double Glazing*
- *Contemporary Interiors*
- *No Upper Chain*



Additional Information

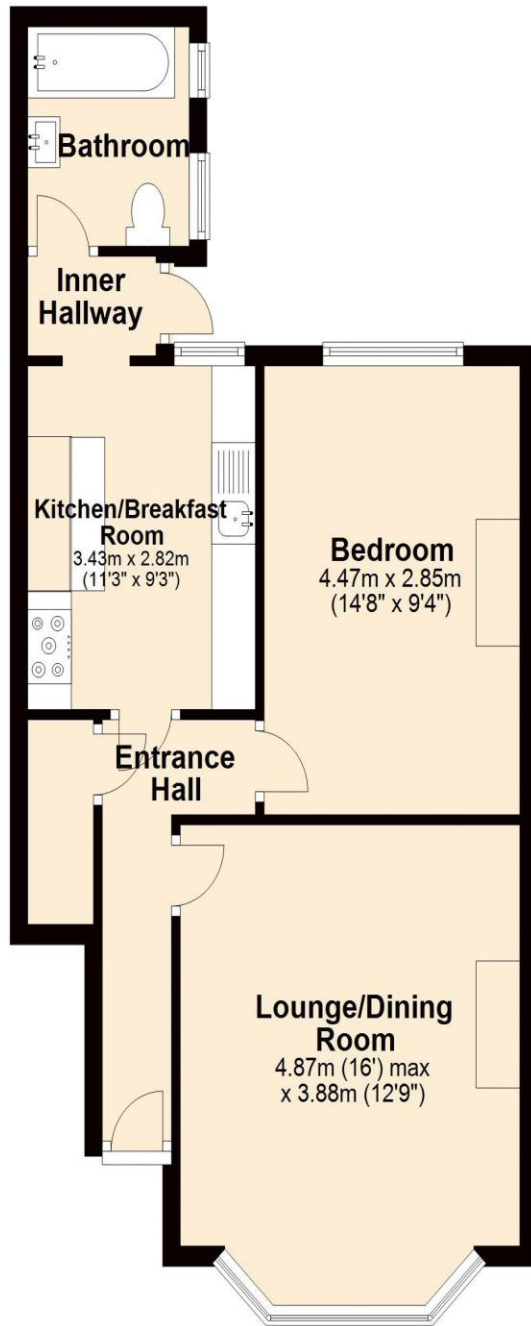
TENURE. LEASEHOLD

LOCAL AUTHORITY. LONDON BOROUGH OF HARROW

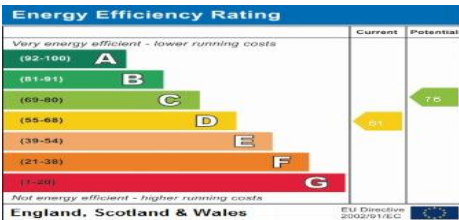
ENERGY EFFICIENCY RATING. D

Ground Floor

Approx. 51.3 sq. metres (552.7 sq. feet)



Total area: approx. 51.3 sq. metres (552.7 sq. feet)



We have not sought to verify the legal title of the property, the existence of planning permissions and/or building regulation approvals and have been unable to check the working condition of any services or appliances.

Property layouts are for general guidance and are not drawn exactly to scale. Measurements are taken at the widest points and bays, alcoves, wardrobes etc. may not be shown.