

# THE HOME AGENCY

*'Passion for property.'*



33 Clauden Close, Swaythling, Southampton, Hampshire, SO18

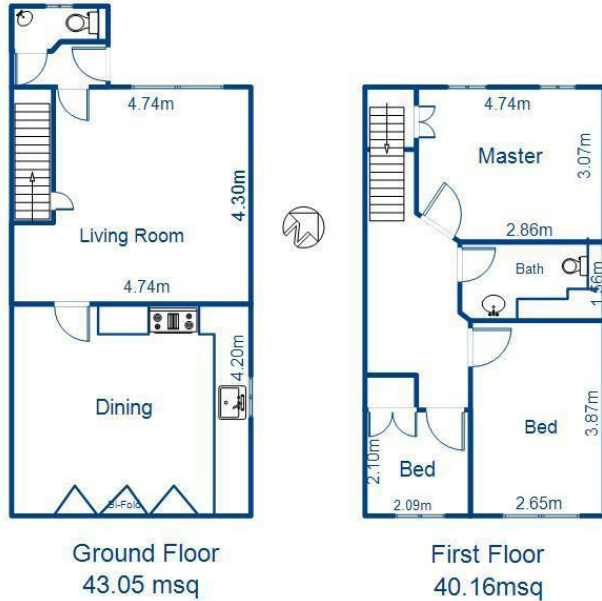
£1,695 PCM

- Three Bed Semi Detached Family Home
- Gas Central Heating
- Downstairs WC
- Pets Considered
- Stunning Kitchen/Diner
- Garden
- Two Double Bedrooms
- Double Glazing
- Double Driveway
- Modern Bathroom

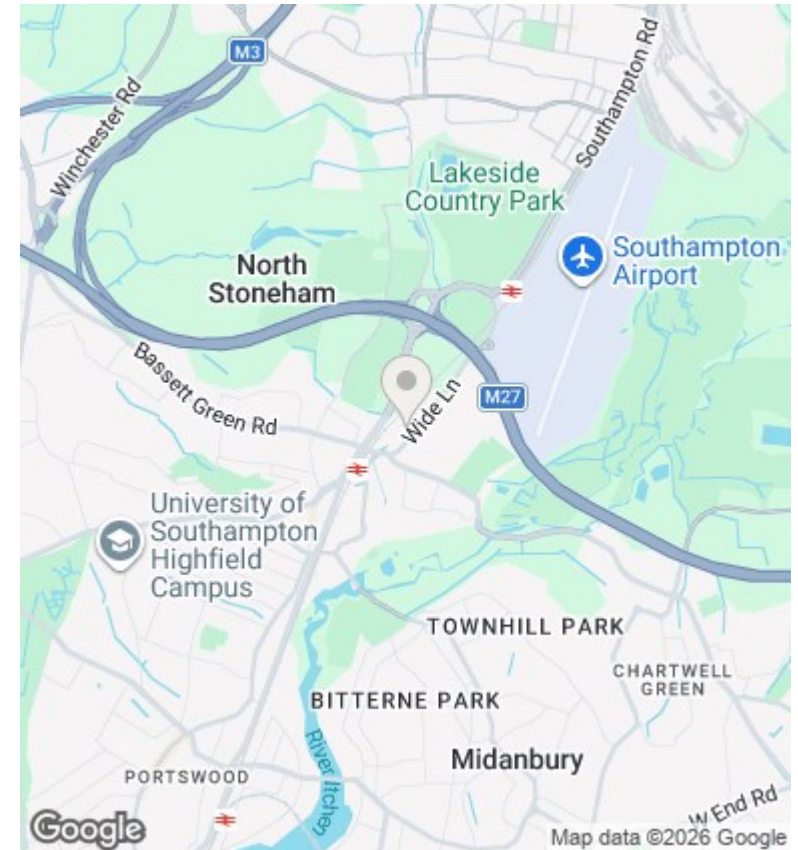
11 London Road, Southampton, Hampshire, SO15 2AE  
02380 632632

enquiries@thehomeagency.net  
<https://thehomeagency.net>

33 Clauden Close Swaythling SO18 2HQ



ALL MEASUREMENTS ARE APPROXIMATE



## Directions

## Viewings

Viewings by arrangement only. Call 02380 632632 to make an appointment.

## Council Tax Band

B

## EPC Rating:

C

Energy Efficiency Rating		Current	Potential
<i>Very energy efficient - lower running costs</i>			
(92 plus)	A		90
(81-91)	B		
(69-80)	C	79	
(55-68)	D		
(39-54)	E		
(21-38)	F		
(1-20)	G		
<i>Not energy efficient - higher running costs</i>			
<b>England &amp; Wales</b>		EU Directive 2002/91/EC	