



Dibble Cottage Reeth, Richmond, DL11 6SF  
£179,995



## Dibble Cottage Reeth, Richmond, DL11 6SF

This one-bedroom cottage offers a delightful retreat in the heart of the Dales. Just a stone's throw from the village green, the property is perfectly positioned to enjoy the local amenities and the stunning natural beauty that surrounds it.

This immaculately presented cottage is currently operating as a successful holiday rental, making it an excellent investment opportunity for those looking to enter the property market or expand their portfolio. The interior boasts a warm and inviting atmosphere, with tasteful decor and modern comforts that ensure a pleasant stay for guests or a cosy home for the new owner.

The property features a well-appointed bathroom and a comfortable bedroom, providing a serene space to unwind after a day of exploring the breathtaking Yorkshire Dales. Its compact size makes it an ideal lock-up-and-leave option, perfect for those seeking a weekend getaway or a peaceful retreat from the hustle and bustle of everyday life.

### HALLWAY

A wooden entrance door leads into the porch, with a fitted mat wall lights, staircase leading to the front door and a sliding sash window with plantation shutters. Walk through into the bedroom.

### DOWNSTAIRS BEDROOM 3.36 x 2.79 (11'0" x 9'1")

A double bedroom with two under stairs storage cupboards, fitted wall cupboards, two wall lights, electric radiator and spot lights. A door leads into the shower room.

### SHOWER ROOM 2.56 x 1.52 (8'4" x 4'11")

Having a corner shower cubicle with a Mira shower, wash hand basin, w.c, towel radiator, extractor fan, double glazed sliding sash window fitted with plantation shutters.

### FIRST FLOOR

### OPEN PLAN LOUNGE / DINING ROOM / KITCHEN 4.52 x 4.50 (widest point) (14'9" x 14'9" (widest point))

An L shaped room comprising of:

### LOUNGE / DINING AREA 4.50 x 2.73 (14'9" x 8'11")

With a log burning stove and tiled hearth, two sliding sash double glazed windows to the front fitted with plantation shutters. Three wall lights, exposed roof beams, velux window, tv aerial point and electric radiator. A step leads up to the kitchen area.

### KITCHEN 2.88 x 1.85 (9'5" x 6'0")

Fitted with a range of wall, base and drawer units with wooden effect worktops, corner display cabinet, wall display cabinet, ceramic single drainer sink unit with a mixer tap over, Bosch electric oven, Electrolux electric hob, velux window and space for an under counter fridge.

### EXTERNALLY

To the front of the property there is a small flagged patio area and an external welcome light.

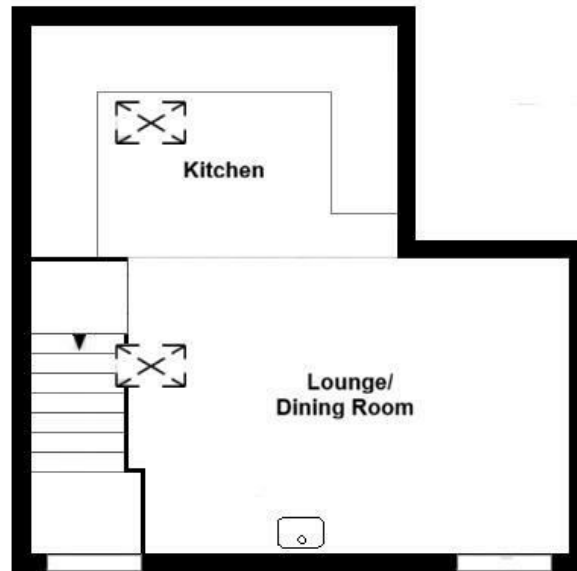
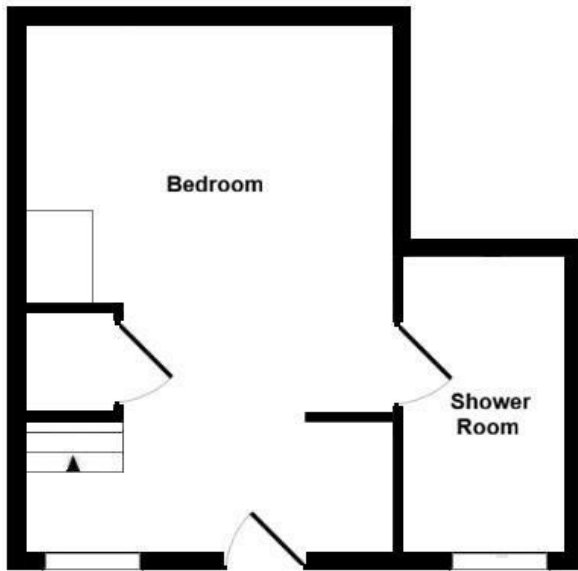
### NOTES

- \* FREEHOLD
- \* COUNCIL TAX BAND - Non Domestic



**£179,995**

Not to Scale



FIRST FLOOR

