

Eastmount



W
WHITES

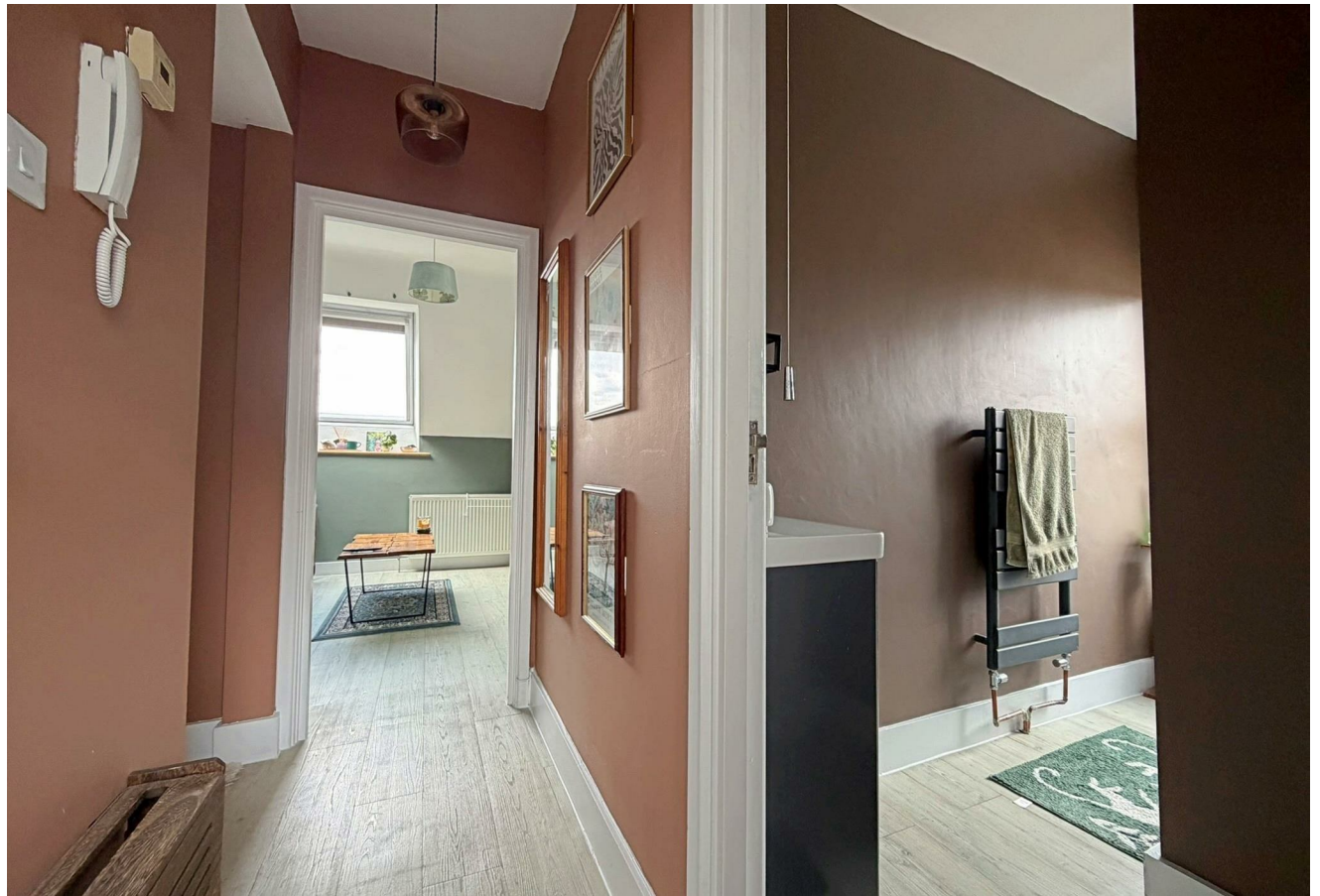
Eastmount, Shady Bower, SP1 2RE

** VIEWINGS ON HOLD DUE TO HIGH DEMAND **

A stylish one bedroom apartment in a characterful converted building within a popular location with communal gardens and parking.

- Modernised one bedroom apartment.
- Situated on the second floor.
- Living room with views over the city.
- Fitted kitchen with appliances.
- Modern shower room.
- Double bedroom.
- Communal grounds.
- Parking for one car.
- Gas central heating.
- EPC band D

£925 PCM





About The Property

A stylish one bedroom apartment in a characterful converted building within a popular location with communal gardens and parking.

Accommodation comprises:

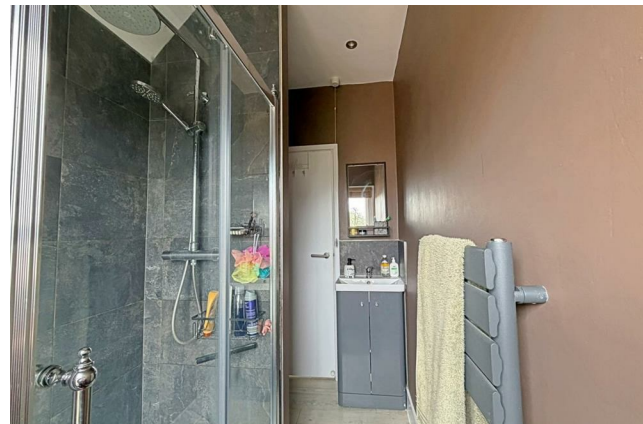
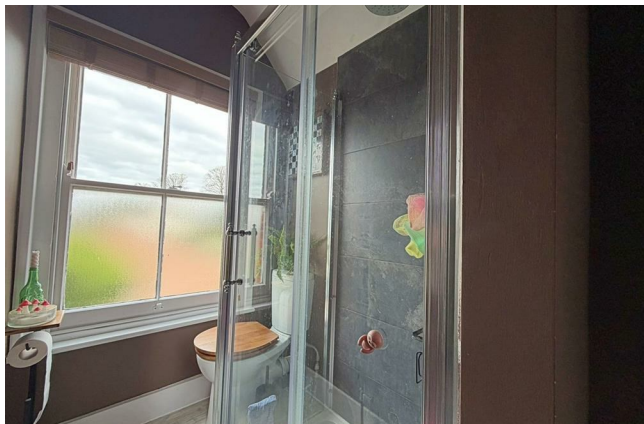
Entrance hall. Living room with views over the city and cathedral spire. Modern shower room. Bright kitchen with gas boiler, electric oven, hob, washing machine and fridge. Double bedroom with hanging rail.

The property benefits from laminate flooring and gas central heating.

Communal gardens and parking for one car.

Sadly, the lease stipulates no pets.





Location

To delete all this text quicky - open the text box, then hold CRT and A - this will highlight all text in the box. Then you can press delete.

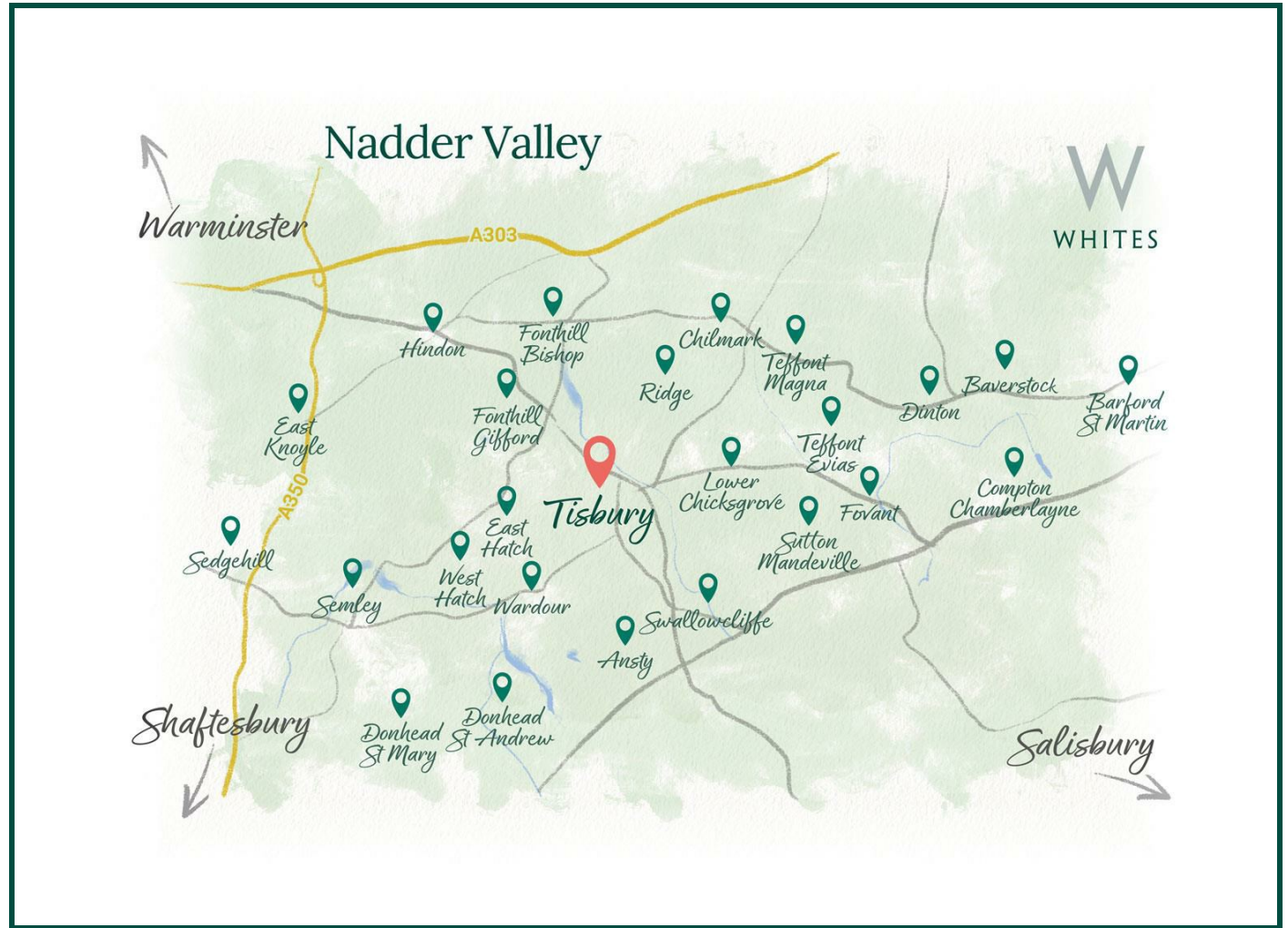
[Copy village description Mimi has given you into here (from the word document)].

For more info on the villages / to help with the timings below, you can also look at the villages on our website - they give you lots of useful information like pub names, shops, etc.

You can find them by searching the village name on our website's serach bar, and clicking on the village page.

---> for the box to the right - that should contain the hand drawn map of the area. You can add this by clicking 'New Selection' -> Library Image -> 'Handdrawn Area Map - XXX area'.

Once you have added the map to the brochure, hold down the Shift Key to resize it (this means it will resize proportionally, so will be much easier for you to fit in the box!). Once you have dragged the map to the correct size, take your finger off



Southampton Central: 30 mins
Bath Spa: 1 hr
London Waterloo: 1 hr 28 mins



Salisbury: X mins
Bath: X hr X mins
London: X hr X mins



Local school: X mins
Local public house: X mins
Local amenities: X mins

Key Information

Local Authority:

Wiltshire Council

Council Tax:

Band: B - £XXXXX (2025/2026)

Property Type:

Apartment

Floor Area:



490.00 sq ft

Let Available Date:

1st May 2026 NB: This date is provisional and will only be confirmed once referencing has been successfully completed.

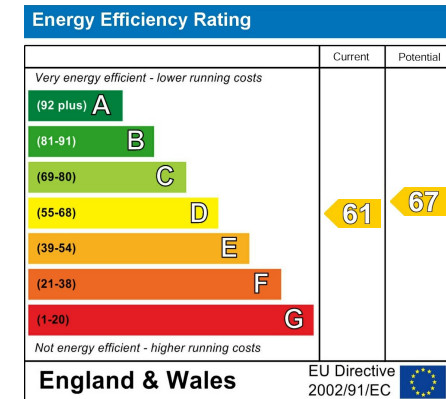
Furnish Type:

Unfurnished

Deposit:

£1,065

EPC:



Floor Plan

Approx. 45.6 sq. metres (490.6 sq. feet)



Total area: approx. 45.6 sq. metres (490.6 sq. feet)