



Glebeland Gardens, TW17

£560,000

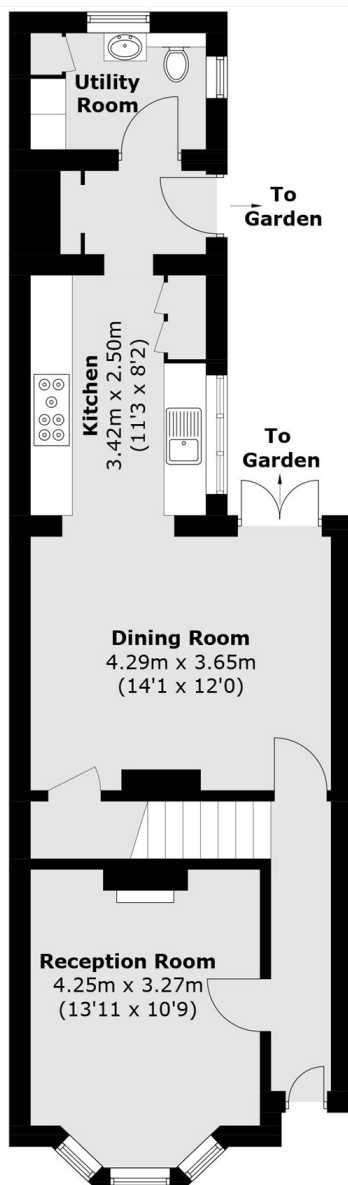
An incredible three double bedroom, two bathroom, extended Victorian home filled with period features and character. This stunning property has the added bonus of a south facing patio garden.

Glebeland Gardens, is an amazing location. This popular residential road is just off Shepperton High Street. Shepperton Station which provides a direct service to London Waterloo is approximately a third of a mile away.

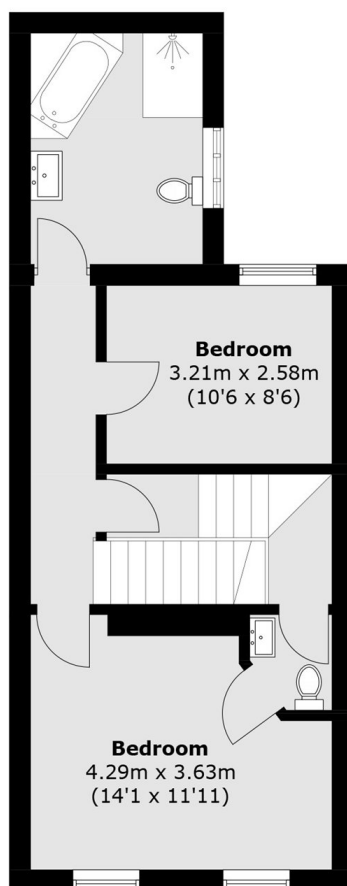
Features

- Victorian
- Two Reception Rooms
- Three Double Bedrooms
- Two Bathrooms
- Utility Room
- South Facing Patio Garden

Glebeland Gardens, Shepperton, TW17



Ground Floor



First Floor



Second Floor

Total area (approx.): 133.5 sq. m (1,436.9 sq. ft)
(Excluding Eaves)