



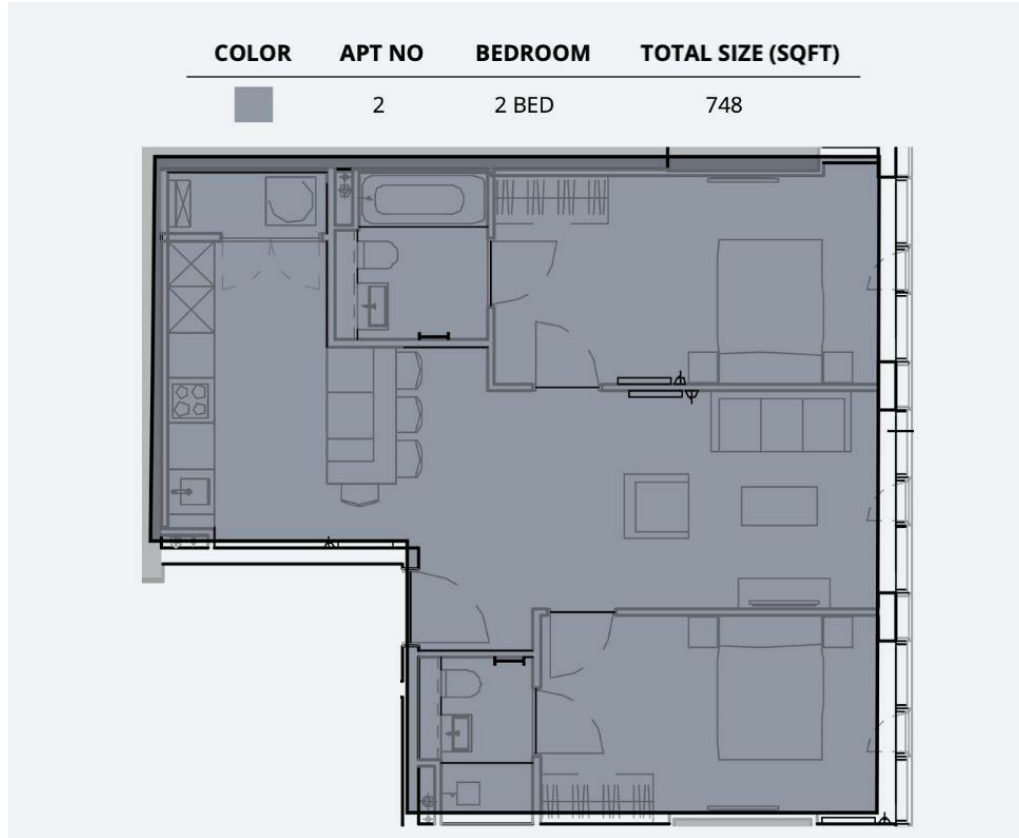
80 Port Street

, Manchester M1 2FY

- ****ZERO DEPOSIT OPTION****
- Expansive gym & yoga studios
- Bookable dining & event spaces
 - Day-to-night lounges
 - Green space & terraces
- Indoor swimming pool
- Semi-covered roof terrace
- Social & quiet co-work spaces
- Parcel collection services
 - Double En-Suite

£1,800 Per Month

Local Authority **Manchester**
Council Tax Band **E**
EPC Rating **B**



Manchester Office

Peter House Oxford Street, Manchester,
M1 5AN

Contact

www.londonvictoriagroups.co.uk

Agents Note: Whilst every care has been taken to prepare these particulars, they are for guidance purposes only. All measurements are approximate and for general guidance purposes only and whilst every care has been taken to ensure accuracy, they should not be relied upon and potential buyers/tenants are advised to recheck the measurements.