





Parkhill Road  
Camberley, GU17 0NB  
£425,000

## Property Details

 3 bedrooms

 1 bath

 EPC Rating C

 997 sqft

 Blackwater Station (0.5 miles)

- NO ONWARD CHAIN
- 3 Bedroom Semi-Detached Bungalow
- Private Rear Garden
- Large Driveway For Several Cars
- Detached Garage
- Short Walk To Shops, Amenities, Schools & Transport Links
- Potential To Extend STP
- Large Living Room
- Council Tax Band D

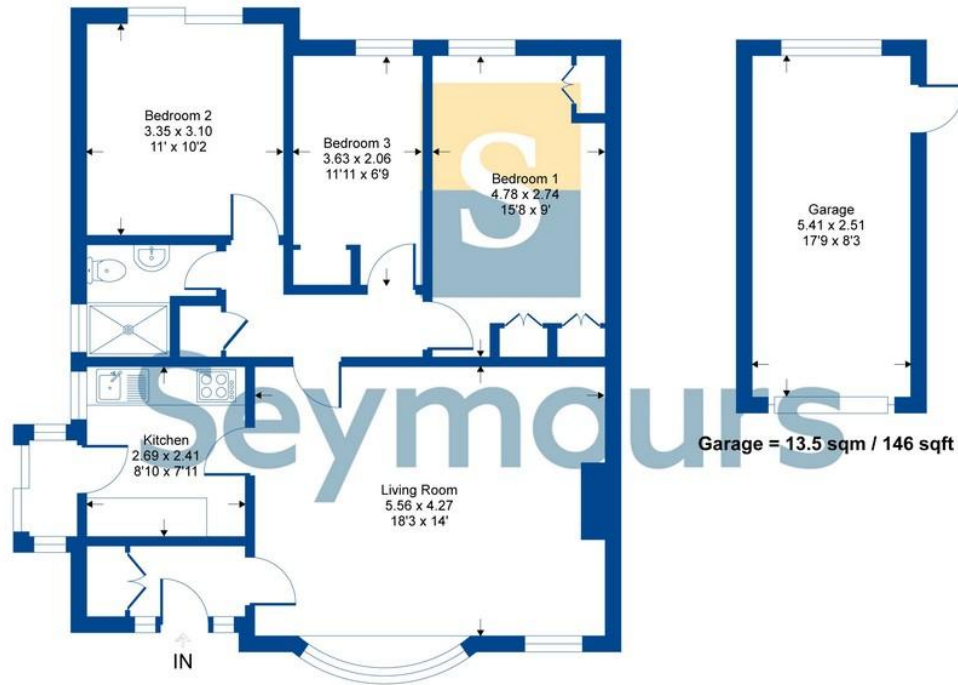
**\*\*No Onward Chain\*\*** This three-bedroom semi-detached bungalow benefits from a spacious living room and an updated kitchen as well as a low maintenance & private rear garden, plenty of driveway parking and a detached garage to the side. The property is conveniently located in Blackwater and is only a short walk away from local shops, amenities and the railway station as well as an attractive countryside close by.



## Property Details

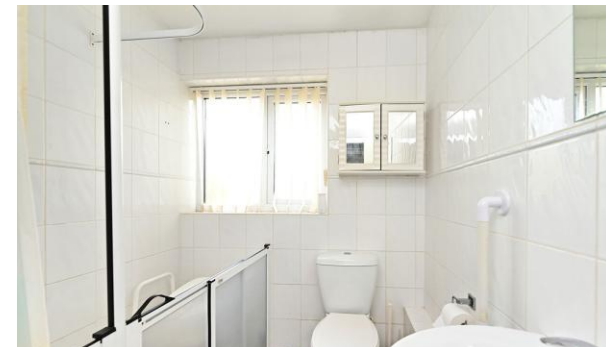
### Parkhill Road

Approximate Gross Internal Area = 78.7 sq m / 848 sq ft  
Approximate Garage Internal Area = 13.5 sq m / 146 sq ft  
Approximate Total Internal Area = 92.2 sq m / 994 sq ft



Ground Floor = 78.7 sqm / 848 sqft

Whilst every attempt has been made to ensure the accuracy of the floor plan contained here, measurements of doors, windows, rooms and any other items are approximate and no responsibility is taken for any error, omission or mis-statement. This plan is for illustrative purposes only and should be used as such by any prospective purchaser.



Seymours Blackwater Office 6 Kings Parade, 34 London Road, Blackwater, Camberley, Surrey, GU17 9AA  
01276 534100 / james@seymours-blackwater.co.uk / seymours-estates.co.uk

The information contained in these Sales Particulars does not form part of any contract neither is any warranty given or implied by Seymours or their clients as to the accuracy of measurements of details stated. Every effort is made to ensure that our Sales Particulars are correct and reliable. We do not test service, systems and appliances and we are unable to verify they are in working order.