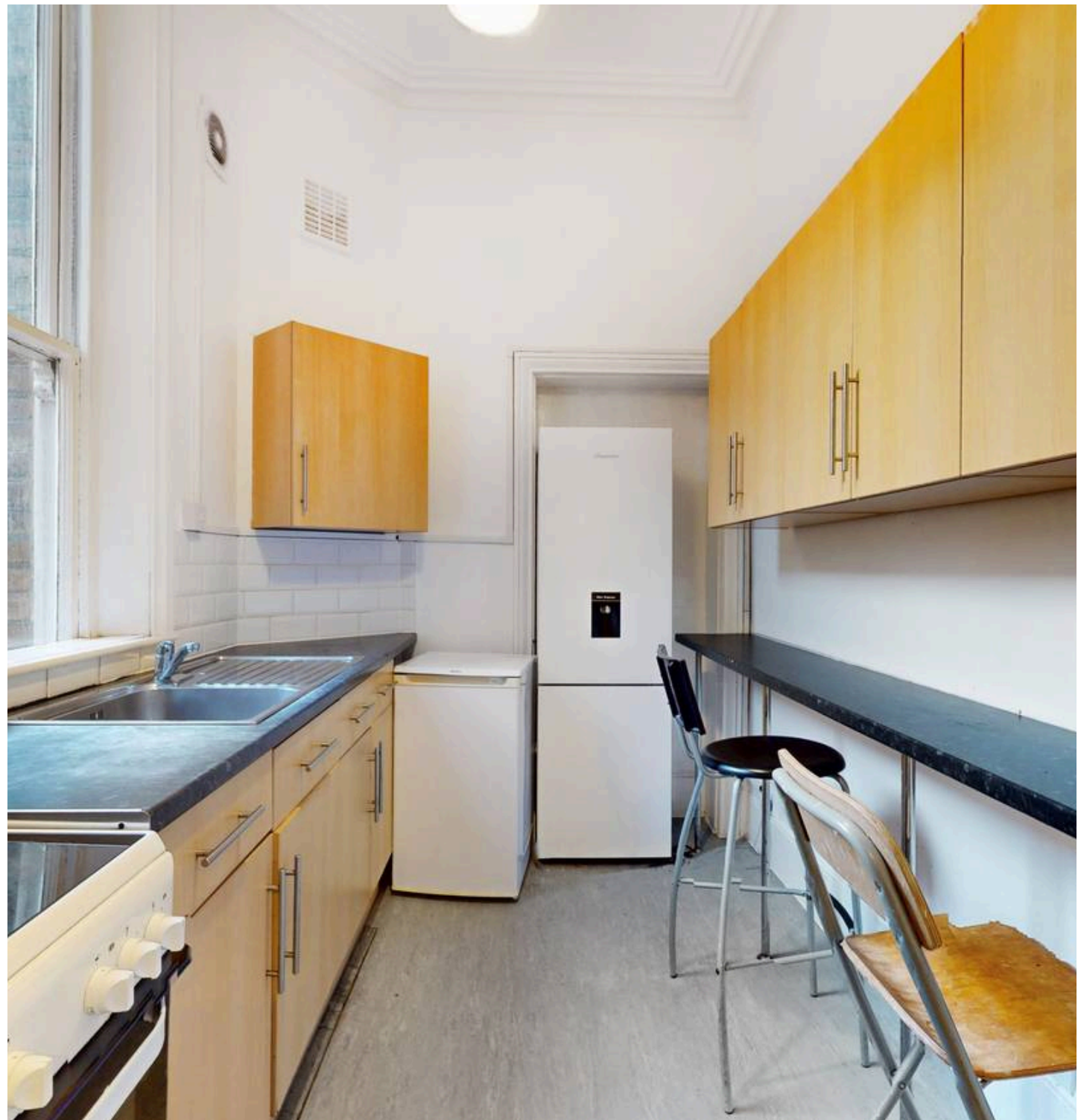




Birchington Road, West Hampstead, NW6
£3,850 pcm

Birchington Road, West Hampstead, NW6

Available from September. We are delighted to offer this spacious four bedroom split level apartment set in a house conversion on a quiet residential street in Kilburn (Jubilee line / Bakerloo Line). The property is flooded with natural light and offers high ceilings, private garden and neutral décor throughout. There are excellent transport links and local amenities within a short walk. The property is ideal for students, professional sharers or a family. Please contact our office for more information.





Birchington Road, NW6 4LJ

Approx Gross Internal Area = 149.3 sq m / 1607 sq ft

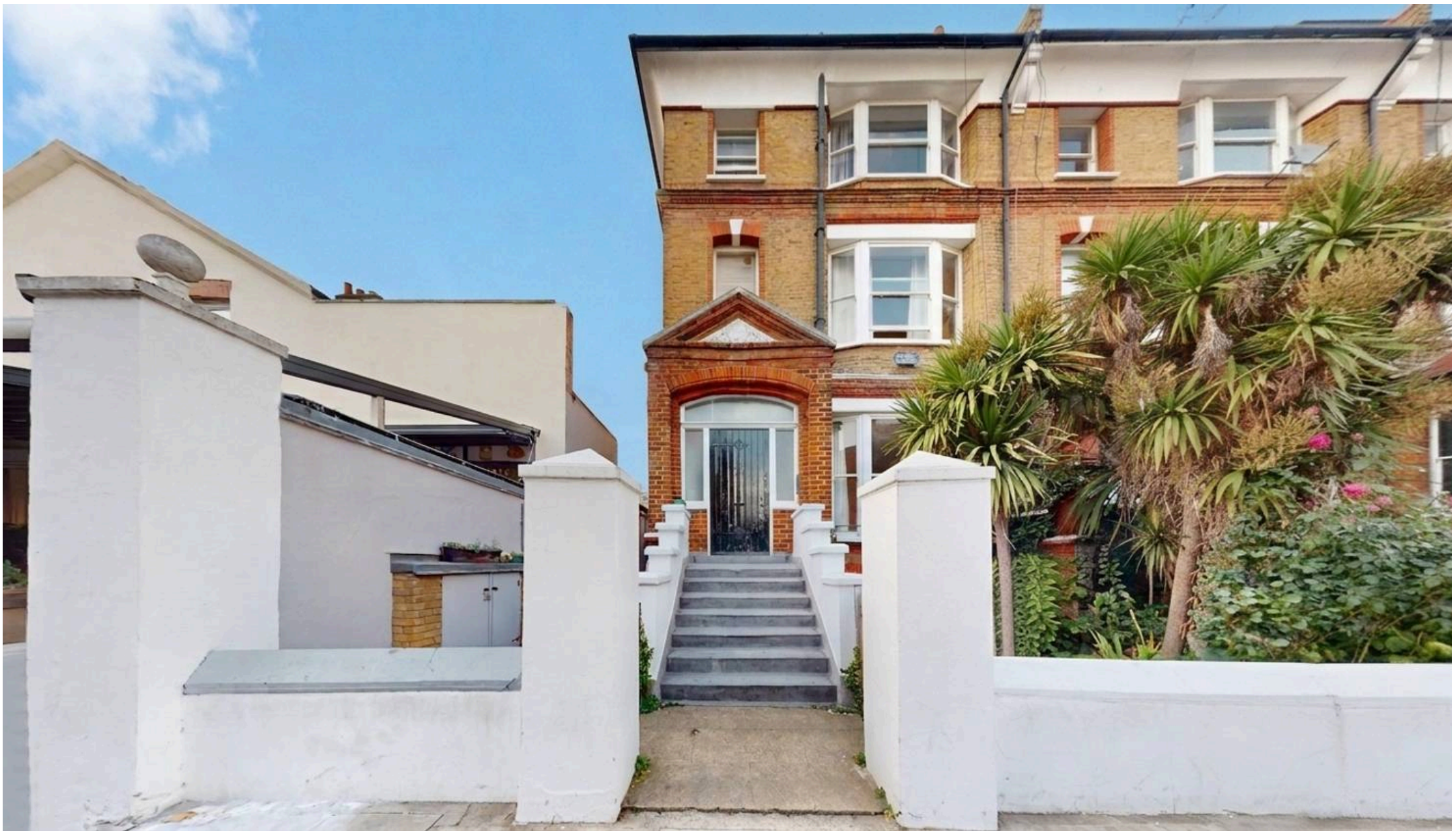


Ref :

Copyright **BLEU PLAN**

The Floor plan is not to scale and measurements and areas shown are approximate and therefore should be used for illustrative purposes only. The plan has been prepared in accordance with the RICS code of Measuring Practice and whilst we have confidence in the information produced it must not be relied on. Maximum lengths and widths are represented on the floor plan. If there is any aspect of particular importance, you should carry out or commission your own inspection of the property.

Copyright @ BleuPlan



Black Katz

22 West Hampstead Mews, London - NW6 3BB

02073285000 • Thomas@blackkatz.com • blackkatz.com/