



3 Radford Cottages Kingfisher Way

Oreston, Plymouth, PL9 7PS

£225,000



A superbly position stone-built mid-terraced cottage being sold with no onward chain & fabulous views over Hooe Lake towards Staddon Heights. The cottage has its own garden with a rear courtyard. The accommodation briefly comprises of a living room, kitchen with walk-in pantry, two first floor bedrooms & a shower room.



RADFORD COTTAGES, KINGFISHER WAY, ORESTON, PL9 7PS

ACCOMMODATION

A front door opens into the living room.

LIVING ROOM 15'7 max width x 11'3 (4.75m max width x 3.43m)

Window overlooking the gardens & Hooe Lake. Exposed floor boards. Wall mounted electric heater. Cupboard to one side of the chimney breast with shelving. Under-stairs storage cupboard. Doorway opens into the kitchen.

KITCHEN 13'4 x 7'9 (4.06m x 2.36m)

Tiled floor. Base mounted cabinets with work surfaces. Stainless steel single drainer sink unit. Space for free standing appliances. Window overlooking the courtyard doorway leading to the courtyard walk-in pantry, also housing the electric meter & consumer unit.

FIRST FLOOR LANDING

Provides access to the bedrooms & shower room. Loft hatch.

BEDROOM ONE 14' x 8'8 (4.27m x 2.64m)

Situated to the front with window overlooking the gardens & Hooe Lake. Exposed floorboards. Electric heater.

BEDROOM TWO 9' x 8' (2.74m x 2.44m)

Window overlooking the courtyard. Exposed floorboards. Electric heater. Cupboard with shelving.

SHOWER ROOM 10'10 x 3'6 (3.30m x 1.07m)

Comprises basin with storage beneath, double-sized shower with electric shower system, tiled walls within shower & wc.

OUTSIDE

To the rear is a courtyard with small outside shed & covered store area. To the front, gardens are laid to lawn with further timber shed, shrubs & lovely views over Hooe Lake towards Staddon Heights.

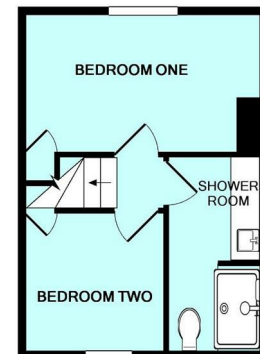
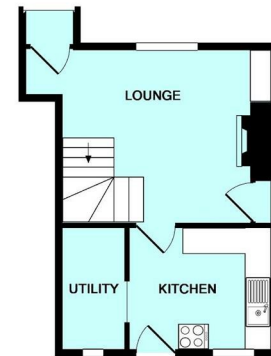
COUNCIL TAX

Plymouth City Council
Council Tax Band: A

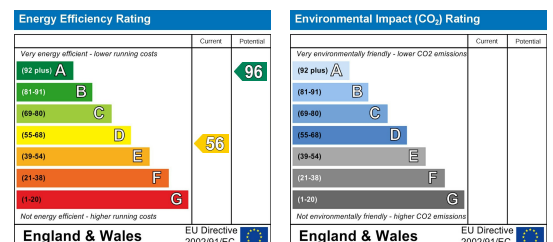
Area Map



Floor Plans



Energy Efficiency Graph



These particulars, whilst believed to be accurate are set out as a general outline only for guidance and do not constitute any part of an offer or contract. Intending purchasers should not rely on them as statements of representation of fact, but must satisfy themselves by inspection or otherwise as to their accuracy. No person in this firm's employment has the authority to make or give any representation or warranty in respect of the property.