



**JAPAN  
SALES & LETTINGS  
AGENCY**



**Uxbridge Road, Ealing W5**  
**£745,000**



2



2



0



C

**Council  
Tax Band**

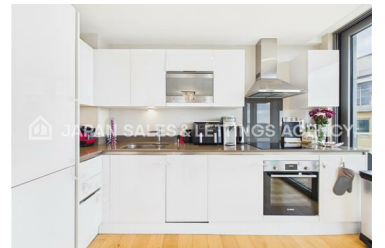
A rare opportunity to acquire a stunning high-rise apartment in one of West London's most coveted modern developments, offering panoramic views and exceptional finish throughout.

**Key features:**

- 2 bedrooms, 2 bathrooms
- Parking: Underground allocated parking
- Furnishings: Furnished, part furnished or unfurnished
- USP: Floor-to-ceiling windows framing panoramic views, a beautifully appointed open-plan living space and sleek fully fitted kitchen, all finished to an outstanding standard

**Description:**

- 11 mins walk to Ealing Broadway Station (Elizabeth, Central & District lines)
- 15 mins to Bond Street / Oxford Street via the Elizabeth line
- Imperial College, UCL, LSE and London Business School all within easy reach
- 4 mins walk to cafe, local shops and restaurants
- Open-plan reception with floor-to-ceiling windows and panoramic views
- Sleek fully fitted kitchen finished to an exceptional standard
- EPC: C
- Council: Ealing, Tax band see [gov.uk/council-tax-bands](http://gov.uk/council-tax-bands)
- Size: 775 sqft / 71.8 sqm
- Property type: Apartment
- Service charge: £4,500 approx.
- Ground rent: £350 approx.
- Lease: 999 years from 2015



8 Station Parade, Uxbridge Road, London W5 3LD  
+44 (0)20 8993 6100 | [hello@japanlet.com](mailto:hello@japanlet.com) | [www.japanlet.com](http://www.japanlet.com)  
JAPAN AT UK LIMITED t/a Japan Letting Agency

Ref: 19735602